

Product datasheet

Recombinant human PD-L1 protein ab167713

1 Image

Overview

Product name	Recombinant human PD-L1 protein
Protein length	Protein fragment

Description

Nature	Recombinant
Source	HEK 293 cells
Amino Acid Sequence	
Accession	Q9NZQ7
Species	Human
Sequence	FTVTVPKDLVWVEYGSNMTIECKFPVEKQLDLAALIVY WEMEDKNIQFV HGEEDLKVQHSSYRQRARLLKDQLSLGNAALQITDVK LQDAGVYRCMISY GGADYKRITVKVNAPYNKINQRILVVDPTSEHELTCQA EGYPKAEVMT SSDHQVLSGKTTTTNSKREEKLFNVTSTLRINTTTNEIFY CTFRRLDPEE NHTAELVIPELPLAHPNER
Molecular weight	26 kDa including tags
Amino acids	19 to 238
Tags	His tag C-Terminus

Specifications

Our [Abpromise guarantee](#) covers the use of **ab167713** in the following tested applications.

The application notes include recommended starting dilutions; optimal dilutions/concentrations should be determined by the end user.

Biological activity	Measured by its ability to inhibit anti-CD3 antibody induced IL2 secretion in human T lymphocytes. The ED ₅₀ for this effect is typically 0.6-5 µg/ml.
Applications	SDS-PAGE Functional Studies
Endotoxin level	< 1.000 Eu/µg
Purity	>95% by SDS-PAGE .

Form	Lyophilised
Additional notes	For a recombinant rabbit monoclonal antibody to PD-L1 in IHC usage and KO validated - see ab205921 (clone 28-8) For a recombinant rabbit monoclonal antibody to PD-L1 in WB and ICC/IF usage - see ab174838 (clone EPR1161(2))

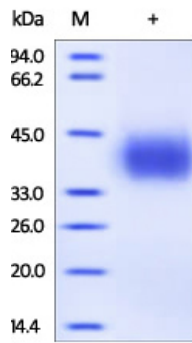
Preparation and Storage

Stability and Storage	Shipped at 4°C. Store at +4°C short term (1-2 weeks). Upon delivery aliquot. Store at -20°C or -80°C. Avoid freeze / thaw cycle. pH: 7.40 Constituent: 99% PBS Note: Normally Mannitol or Trehalose are added as protectants before lyophilization. This product is an active protein and may elicit a biological response in vivo, handle with caution.
Reconstitution	It is strongly recommended to reconstitute the lyophilized protein with 250 µL sterile deionized water to a stock solution of 400 µg/ml. Solubilize for 30 to 60 minutes at room temperature with occasional gentle mixing. Avoid vigorous shaking or vortexing.

General Info

Function	Involved in the costimulatory signal, essential for T-cell proliferation and production of IL10 and IFNG, in an IL2-dependent and a PDCD1-independent manner. Interaction with PDCD1 inhibits T-cell proliferation and cytokine production.
Tissue specificity	Highly expressed in the heart, skeletal muscle, placenta and lung. Weakly expressed in the thymus, spleen, kidney and liver. Expressed on activated T- and B-cells, dendritic cells, keratinocytes and monocytes.
Sequence similarities	Belongs to the immunoglobulin superfamily. BTN/MOG family. Contains 1 Ig-like C2-type (immunoglobulin-like) domain. Contains 1 Ig-like V-type (immunoglobulin-like) domain.
Cellular localization	Cell membrane and Endomembrane system.

Images



SDS-PAGE of reduced ab167713 stained overnight with Coomassie Blue.

SDS-PAGE - Recombinant human PD-L1 protein (ab167713)

Please note: All products are "FOR RESEARCH USE ONLY AND ARE NOT INTENDED FOR DIAGNOSTIC OR THERAPEUTIC USE"

Our Abpromise to you: Quality guaranteed and expert technical support

- Replacement or refund for products not performing as stated on the datasheet
- Valid for 12 months from date of delivery
- Response to your inquiry within 24 hours
- We provide support in Chinese, English, French, German, Japanese and Spanish
- Extensive multi-media technical resources to help you
- We investigate all quality concerns to ensure our products perform to the highest standards

If the product does not perform as described on this datasheet, we will offer a refund or replacement. For full details of the Abpromise, please visit <https://www.abcam.com/abpromise> or contact our technical team.

Terms and conditions

- Guarantee only valid for products bought direct from Abcam or one of our authorized distributors