

Product datasheet

Recombinant human PKC alpha protein ab55672

1 Image

Overview

---

**Product name** Recombinant human PKC alpha protein

**Protein length** Full length protein

Description

---

**Nature** Recombinant

**Source** Baculovirus infected Sf9 cells

Amino Acid Sequence

**Species** Human

Specifications

---

Our [Abpromise guarantee](#) covers the use of **ab55672** in the following tested applications.

The application notes include recommended starting dilutions; optimal dilutions/concentrations should be determined by the end user.

**Biological activity** Specific Activity 3333nmol/min/mg.

**Applications** Functional Studies

Western blot

SDS-PAGE

Other

**Form** Liquid

**Additional notes** [ab204856](#) (CREB peptide) can be utilized as a substrate for assessing kinase activity

Preparation and Storage

---

**Stability and Storage** Shipped on dry ice. Upon delivery aliquot and store at -80°C. Avoid freeze / thaw cycles.

Preservative: None

Constituents: 25% Glycerol, 50mM Tris HCl, 150mM Sodium chloride, 0.25mM DTT, 0.1mM EGTA, 0.1mM EDTA, 0.1mM PMSF, pH 7.5

This product is an active protein and may elicit a biological response in vivo, handle with caution.

## General Info

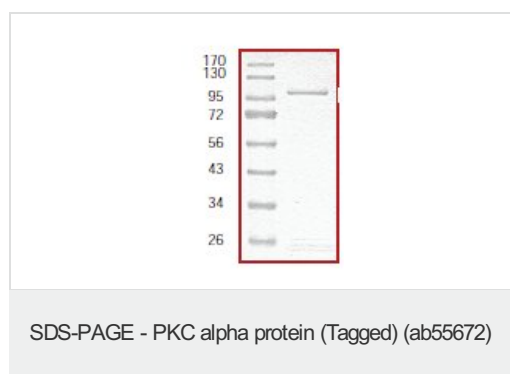
---

<b>Function</b>	This is a calcium-activated, phospholipid-dependent, serine- and threonine-specific enzyme. May play a role in cell motility by phosphorylating CSPG4. PKC is activated by diacylglycerol which in turn phosphorylates a range of cellular proteins. PKC also serves as the receptor for phorbol esters, a class of tumor promoters.
<b>Sequence similarities</b>	Belongs to the protein kinase superfamily. AGC Ser/Thr protein kinase family. PKC subfamily. Contains 1 AGC-kinase C-terminal domain. Contains 1 C2 domain. Contains 2 phorbol-ester/DAG-type zinc fingers. Contains 1 protein kinase domain.
<b>Cellular localization</b>	Cytoplasm. Cell membrane. Nucleus.

---

## Images

---



SDS Page analysis of ab55672

**Please note:** All products are "FOR RESEARCH USE ONLY AND ARE NOT INTENDED FOR DIAGNOSTIC OR THERAPEUTIC USE"

## Our Abpromise to you: Quality guaranteed and expert technical support

---

- Replacement or refund for products not performing as stated on the datasheet
- Valid for 12 months from date of delivery
- Response to your inquiry within 24 hours
- We provide support in Chinese, English, French, German, Japanese and Spanish
- Extensive multi-media technical resources to help you
- We investigate all quality concerns to ensure our products perform to the highest standards

If the product does not perform as described on this datasheet, we will offer a refund or replacement. For full details of the Abpromise, please visit <https://www.abcam.com/abpromise> or contact our technical team.

## Terms and conditions

---

- Guarantee only valid for products bought direct from Abcam or one of our authorized distributors