

Product datasheet

# Recombinant rabbit TPA Tissue Plasminogen Activator protein ab92600

1 Image

Overview

---

<b>Product name</b>	Recombinant rabbit TPA Tissue Plasminogen Activator protein
<b>Protein length</b>	Full length protein

Description

---

<b>Nature</b>	Recombinant
<b>Source</b>	Insect cells

Amino Acid Sequence

<b>Species</b>	Rabbit
<b>Sequence</b>	GAR <sup>S</sup> FRVTCVDQQTQLTYQRRESWLRPGLRGNRVEYCRCS <sup>S</sup> GGPRCHSVP VQSCSEPRCLNGGTCSQALYFSD <sup>F</sup> VCQCPEGFV <sup>G</sup> KRCEVDTRARCYEDRG IGYRGTWSTTESGAQCVNW <sup>S</sup> SWLALKPYSGRKPNALRLGLGNHNYCRNP DRDTPWCYVFRAGTYSPEFCSTPACSKEKNGNCYL <sup>G</sup> KGQAYRGTHSLTT
<b>Amino acids</b>	1 to 564

Specifications

---

Our [Abpromise guarantee](#) covers the use of **ab92600** in the following tested applications.

The application notes include recommended starting dilutions; optimal dilutions/concentrations should be determined by the end user.

<b>Biological activity</b>	Activity: 2,105,900 IU/mg >95 percent active. Fully complexable with Human PAI-1.
<b>Applications</b>	Functional Studies SDS-PAGE
<b>Purity</b>	> 95 % SDS-PAGE.
<b>Form</b>	Liquid

Preparation and Storage

---

<b>Stability and Storage</b>	Shipped on dry ice. Upon delivery aliquot and store at -80°C. Avoid freeze / thaw cycles.
------------------------------	---

Preservative: None

Constituents: 0.4M HEPES, 0.1M Sodium chloride, pH 7.4

This product is an active protein and may elicit a biological response in vivo, handle with caution.

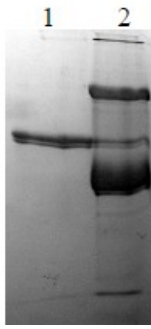
## General Info

---

<b>Function</b>	Converts the abundant, but inactive, zymogen plasminogen to plasmin by hydrolyzing a single Arg-Val bond in plasminogen. By controlling plasmin-mediated proteolysis, it plays an important role in tissue remodeling and degradation, in cell migration and many other physiopathological events. Play a direct role in facilitating neuronal migration.
<b>Tissue specificity</b>	Synthesized in numerous tissues (including tumors) and secreted into most extracellular body fluids, such as plasma, uterine fluid, saliva, gingival crevicular fluid, tears, seminal fluid, and milk.
<b>Involvement in disease</b>	Note=Increased activity of TPA results in increased fibrinolysis of fibrin blood clots that is associated with excessive bleeding. Defective release of TPA results in hypofibrinolysis that can lead to thrombosis or embolism.
<b>Sequence similarities</b>	Belongs to the peptidase S1 family. Contains 1 EGF-like domain. Contains 1 fibronectin type-I domain. Contains 2 kringle domains. Contains 1 peptidase S1 domain.
<b>Domain</b>	Both FN1 and one of the kringle domains are required for binding to fibrin. Both FN1 and EGF-like domains are important for binding to LRP1. The FN1 domain mediates binding to annexin A2. The second kringle domain is implicated in binding to cytokeratin-8 and to the endothelial cell surface binding site.
<b>Post-translational modifications</b>	The single chain, almost fully active enzyme, can be further processed into a two-chain fully active form by a cleavage after Arg-310 catalyzed by plasmin, tissue kallikrein or factor Xa. Differential cell-specific N-linked glycosylation gives rise to two glycoforms, type I (glycosylated at Asn-219) and type II (not glycosylated at Asn-219). The single chain type I glycoform is less readily converted into the two-chain form by plasmin, and the two-chain type I glycoform has a lower activity than the two-chain type II glycoform in the presence of fibrin. N-glycosylation of Asn-152; the bound oligomannosidic glycan is involved in the interaction with the mannose receptor. Characterization of O-linked glycan was studied in Bowes melanoma cell line.
<b>Cellular localization</b>	Secreted > extracellular space.

## Images

---



10% SDS-PAGE showing ab92600  
Lane 1 TPA Tissue Plasminogen Activator  
(5µg) Non-reduced  
Lane 2 TPA Tissue Plasminogen Activator  
(5µg) + PAI-1 (15µg) Non-reduced

SDS-PAGE - TPA Tissue Plasminogen Activator  
protein (Active) (ab92600)

**Please note:** All products are "FOR RESEARCH USE ONLY AND ARE NOT INTENDED FOR DIAGNOSTIC OR THERAPEUTIC USE"

### Our Abpromise to you: Quality guaranteed and expert technical support

- Replacement or refund for products not performing as stated on the datasheet
- Valid for 12 months from date of delivery
- Response to your inquiry within 24 hours
- We provide support in Chinese, English, French, German, Japanese and Spanish
- Extensive multi-media technical resources to help you
- We investigate all quality concerns to ensure our products perform to the highest standards

If the product does not perform as described on this datasheet, we will offer a refund or replacement. For full details of the Abpromise, please visit <https://www.abcam.com/abpromise> or contact our technical team.

### Terms and conditions

- Guarantee only valid for products bought direct from Abcam or one of our authorized distributors