

## Product datasheet

# Anti-Robo1 antibody ab7279

★★★★☆ 12 Abreviews 26 References 6 Images

### Overview

|                            |  |
|----------------------------|--|
| <b>Product name</b>        | Anti-Robo1 antibody  |
| <b>Description</b>         | Rabbit polyclonal to Robo1   |
| <b>Host species</b>        | Rabbit   |
| <b>Specificity</b>         | Some batches may cross-react with Robo2 and Robo3. Please see abreview for more details.                           |
| <b>Tested applications</b> | <b>Suitable for:</b> IHC-FoFr, ICC/IF, IHC-Fr, IHC-P, WB, ELISA, IP  |
| <b>Species reactivity</b>  | <b>Reacts with:</b> Mouse, Human   |
| <b>Immunogen</b>           | Synthetic peptide:<br>C-VLGGYERGEDNNE<br>conjugated to KLH, corresponding to amino acids 1632-1644 of Human Robo1. |

[Run BLAST with](#)      [Run BLAST with](#)

### Properties

|                             |  |
|-----------------------------|--|
| <b>Form</b>                 | Liquid   |
| <b>Storage instructions</b> | Shipped at 4°C. Store at +4°C short term (1-2 weeks). Upon delivery aliquot. Store at -20°C or -80°C. Avoid freeze / thaw cycle. |
| <b>Storage buffer</b>       | Preservative: 0.01% Sodium Azide<br>Constituents: 0.15M Sodium Chloride, 0.02M Potassium Phosphate. pH 7.2                       |
| <b>Purity</b>               | Immunogen affinity purified  |
| <b>Clonality</b>            | Polyclonal   |
| <b>Isotype</b>              | IgG  |

### Applications

Our [Abpromise guarantee](#) covers the use of **ab7279** in the following tested applications.

The application notes include recommended starting dilutions; optimal dilutions/concentrations should be determined by the end user.

| Application | Abreviews | Notes   |
|-------------|-----------|---|
| IHC-FoFr    |           | Use at an assay dependent concentration. PubMed: 19609936 |

| Application | Abreviews | Notes  |
|-------------|-----------|--|
| ICC/IF      | ★★★★★     | Use at an assay dependent concentration.                 |
| IHC-Fr      | ★★★★☆     | Use at an assay dependent concentration.                 |
| IHC-P       | ★★★★★     | Use at an assay dependent concentration.                 |
| WB          | ★★★★☆     | 1/500 - 1/3000. Detects a band of approximately 181 kDa. |
| ELISA       |           | 1/4000 - 1/16000.  |
| IP          | ★★★★★     | 1/2000.  |

## Target

### Function

Receptor for SLIT1 and SLIT2 which are thought to act as molecular guidance cue in cellular migration, including axonal navigation at the ventral midline of the neural tube and projection of axons to different regions during neuronal development. In axon growth cones, the silencing of the attractive effect of NTN1 by SLIT2 may require the formation of a ROBO1-DCC complex. May be required for lung development.

### Tissue specificity

Widely expressed, with exception of kidney.

### Sequence similarities

Belongs to the immunoglobulin superfamily. ROBO family.  
Contains 3 fibronectin type-III domains.  
Contains 5 Ig-like C2-type (immunoglobulin-like) domains.

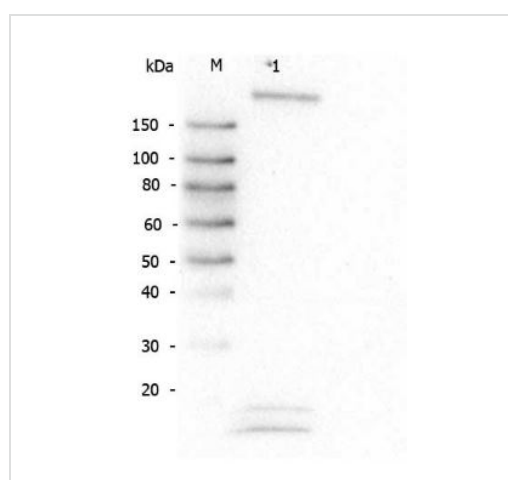
### Post-translational modifications

Ubiquitinated. May be deubiquitinated by USP33.

### Cellular localization

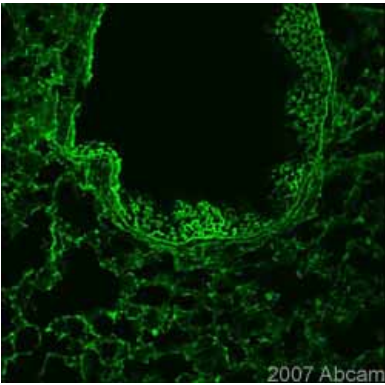
Membrane.

## Images



Anti-Robo1 antibody (ab7279) at 1/1000 dilution + HeLa whole cell lysate at 30 µg

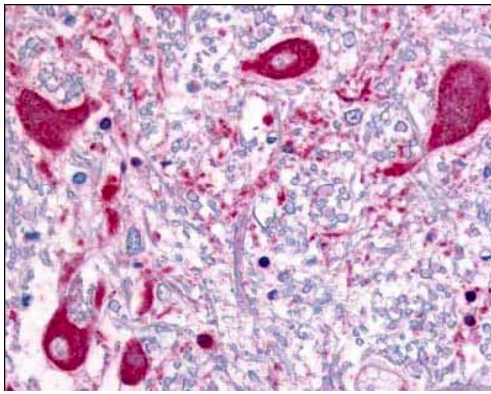
Western blot - Anti-Robo1 antibody (ab7279)



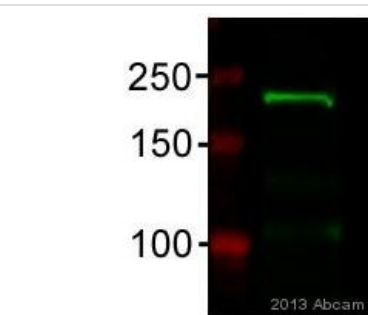
Immunohistochemistry (Frozen sections) - Anti-Robo1 antibody (ab7279)

This image is courtesy of an Abreview submitted by Miss Lise Sorensen

ab7279 at 1/50 staining mouse lung tissue sections (adult, frozen 100um wholemount sections) by IHC-Fr. The tissue was paraformaldehyde fixed and permeabilized with triton x-100 before incubation with the antibody for 16 hours at 4°C. An Alexa Fluor® 488 conjugated donkey anti-rabbit antibody was used as the secondary.



Immunohistochemistry (Formalin/PFA-fixed paraffin-embedded sections) - Anti-Robo1 antibody (ab7279)



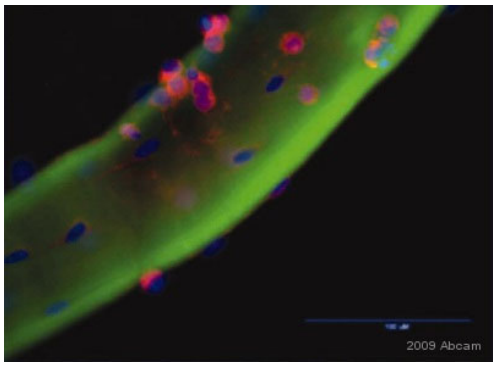
Western blot - Anti-Robo1 antibody (ab7279)

This image is courtesy of an anonymous Abreview.

Anti-Robo1 antibody (ab7279) at 1/1000 dilution + HEK 293T cells at 25 µg

Developed using the ECL technique.

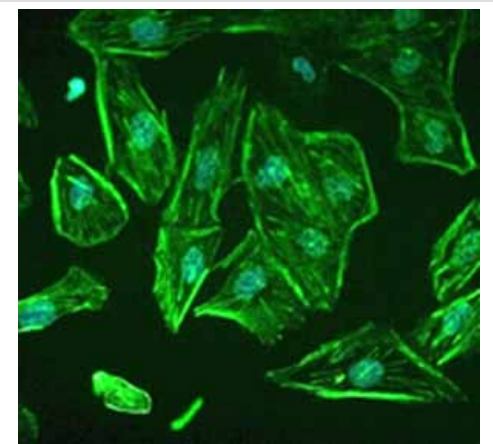
Performed under reducing conditions.



Immunocytochemistry/ Immunofluorescence - Anti-Robo1 antibody (ab7279)

This image was kindly supplied by Dr D Cornelison by Abreview

ab7279 at a 1/2000 dilution staining Robo1 in mouse muscle satellite cells by Immunohistochemistry/ Immunofluorescence, incubated for 12 hours at +4°C. PFA fixed. Blocked with 5% serum for 1 hour at 20°C. Secondary used at 1/500 monoclonal Goat anti-rabbit conjugated to Alexa Fluor 594 (red).



Immunocytochemistry/ Immunofluorescence - Anti-Robo1 antibody (ab7279)

Image from Lindenmeyer MT et al, PLoS One. 2010 Jul 12;5(7):e111545, Fig 5.

ab7279 staining Robo1 in undifferentiated, immortalized human podocytes by Immunocytochemistry/ Immunofluorescence. Cells were fixed with 2% paraformaldehyde and 4% sucrose at room temperature for 10 minutes. The cells were then washed once with PBS, permeabilized with 0.3% Triton X-100 for 10 minutes and incubated with blocking solution (2% FCS, 2% BSA, 0.2% fish gelatin) for 30 minutes, before further incubation with ab7279 for 1 hour. An Alexa Fluor 488 goat anti-rabbit IgG secondary antibody was used at a dilution of 1/200. DAPI was used for nuclear counterstaining.

**Please note:** All products are "FOR RESEARCH USE ONLY AND ARE NOT INTENDED FOR DIAGNOSTIC OR THERAPEUTIC USE"

### Our Abpromise to you: Quality guaranteed and expert technical support

- Replacement or refund for products not performing as stated on the datasheet
- Valid for 12 months from date of delivery
- Response to your inquiry within 24 hours
- We provide support in Chinese, English, French, German, Japanese and Spanish
- Extensive multi-media technical resources to help you
- We investigate all quality concerns to ensure our products perform to the highest standards

If the product does not perform as described on this datasheet, we will offer a refund or replacement. For full details of the Abpromise, please visit <https://www.abcam.com/abpromise> or contact our technical team.

## Terms and conditions

---

- Guarantee only valid for products bought direct from Abcam or one of our authorized distributors