

Product datasheet

Anti-Rsk 2 / MAPKAP Kinase 1b antibody [Y83] ab32133

KO VALIDATED Recombinant RabMAB[®]

[2 References](#) [3 Images](#)

Overview

Product name	Anti-Rsk 2 / MAPKAP Kinase 1b antibody [Y83]
Description	Rabbit monoclonal [Y83] to Rsk 2 / MAPKAP Kinase 1b
Host species	Rabbit
Specificity	The antibody recognises Rsk2. It does not cross react with other S6 kinase family members.
Tested applications	Suitable for: WB, IHC-P, Flow Cyt, IP, ChIP Unsuitable for: ICC
Species reactivity	Reacts with: Mouse, Rat, Human
Immunogen	A synthetic peptide corresponding to residues near N-terminus of human RSK2
Positive control	Hela cell lysate and human lymphoma
General notes	

Our RabMAB[®] technology is a patented hybridoma-based technology for making rabbit monoclonal antibodies. For details on our patents, please refer to [RabMab[®] patents](#)

This product is a recombinant rabbit monoclonal antibody.

Properties

Form	Liquid
Storage instructions	Shipped at 4°C. Upon delivery aliquot and store at -20°C. Avoid freeze / thaw cycles.
Storage buffer	PBS 49%,Sodium azide 0.01%,Glycerol 50%,BSA 0.05%
Purity	IgG fraction
Clonality	Monoclonal
Clone number	Y83
Isotype	IgG

Applications

Our [Abpromise guarantee](#) covers the use of **ab32133** in the following tested applications.

The application notes include recommended starting dilutions; optimal dilutions/concentrations should be determined by the end user.

Application	Abreviews	Notes
WB		1/5000. Detects a band of approximately 90 kDa (predicted molecular weight: 84 kDa).
IHC-P		Use at an assay dependent concentration.
Flow Cyt		1/50. ab172730 - Rabbit monoclonal IgG, is suitable for use as an isotype control with this antibody.
IP		1/100.
ChIP		Use at an assay dependent concentration. PubMed: 25368387

Application notes Is unsuitable for ICC.

Target

Function Serine/threonine kinase that may play a role in mediating the growth-factor and stress induced activation of the transcription factor CREB.

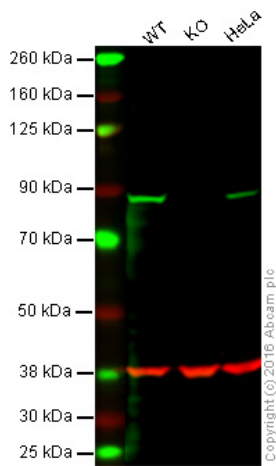
Tissue specificity Expressed in many tissues, highest levels in skeletal muscle.

Involvement in disease Defects in RPS6KA3 are the cause of Coffin-Lowry syndrome (CLS) [MIM:303600]; an X-linked dominant disorder characterized by severe mental retardation with facial and digital dysmorphisms, and progressive skeletal deformations.

Sequence similarities Belongs to the protein kinase superfamily. AGC Ser/Thr protein kinase family. S6 kinase subfamily.
Contains 1 AGC-kinase C-terminal domain.
Contains 2 protein kinase domains.

Post-translational modifications Autophosphorylated on Ser-386, as part of the activation process.
Ser-227 phosphorylation promotes Ser-386 phosphorylation and leads to basal activation. Full activation by growth factors requires additional phosphorylation on Ser-369.

Images



Western blot - Anti-Rsk 2 / MAPKAP Kinase 1b antibody [Y83] (ab32133)

Lane 1: Wild-type HAP1 cell lysate (40 µg)

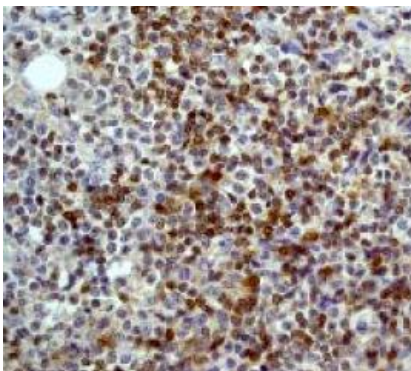
Lane 2: Rsk 2 / MAPKAP Kinase 1b knockout HAP1 cell lysate (40 µg)

Lane 3: HeLa cell lysate (40 µg)

Lane 4: (40 µg)

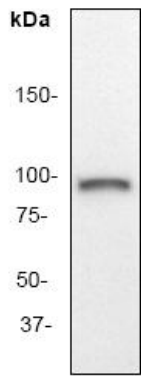
Lanes 1 - 4: Merged signal (red and green). Green - ab32133 observed at 88 kDa. Red - loading control, [ab8245](#), observed at 37 kDa.

ab32133 was shown to specifically react with Rsk 2 / MAPKAP Kinase 1b when Rsk 2 / MAPKAP Kinase 1b knockout samples were used. Wild-type and Rsk 2 / MAPKAP Kinase 1b knockout samples were subjected to SDS-PAGE. Ab32133 and [ab8245](#) (loading control to GAPDH) were diluted at 1/5000 and 1:10,000 dilution respectively and incubated overnight at 4C. Blots were developed with Goat anti-Rabbit IgG H&L (IRDye® 800CW) preadsorbed [ab216773](#) and Goat anti-Mouse IgG H&L (IRDye® 680RD) preadsorbed [ab216776](#) secondary antibodies at 1:10,000 dilution for 1 hour at room temperature before imaging.



Immunohistochemistry (Formalin/PFA-fixed paraffin-embedded sections) - Anti-Rsk 2 / MAPKAP Kinase 1b antibody [Y83] (ab32133)

ab32133, staining human lymphoma by immunohistochemistry, Paraffin embedded tissue



Anti-Rsk 2 / MAPKAP Kinase 1b antibody
[Y83] (ab32133) at 1/5000 dilution + HeLa cell
lysate

Predicted band size: 84 kDa

Observed band size: 90 kDa

Western blot - Anti-Rsk 2 / MAPKAP Kinase 1b
antibody [Y83] (ab32133)

Please note: All products are "FOR RESEARCH USE ONLY AND ARE NOT INTENDED FOR DIAGNOSTIC OR THERAPEUTIC USE"

Our Abpromise to you: Quality guaranteed and expert technical support

- Replacement or refund for products not performing as stated on the datasheet
- Valid for 12 months from date of delivery
- Response to your inquiry within 24 hours
- We provide support in Chinese, English, French, German, Japanese and Spanish
- Extensive multi-media technical resources to help you
- We investigate all quality concerns to ensure our products perform to the highest standards

If the product does not perform as described on this datasheet, we will offer a refund or replacement. For full details of the Abpromise, please visit <https://www.abcam.com/abpromise> or contact our technical team.

Terms and conditions

- Guarantee only valid for products bought direct from Abcam or one of our authorized distributors