

## Product datasheet

# Anti-SBEM antibody ab122530

[1 References](#) [1 Image](#)

### Overview

<b>Product name</b>	Anti-SBEM antibody
<b>Description</b>	Rabbit polyclonal to SBEM
<b>Host species</b>	Rabbit
<b>Tested applications</b>	<b>Suitable for:</b> IHC-P
<b>Species reactivity</b>	<b>Reacts with:</b> Human
<b>Immunogen</b>	antigen sequence AQNPTTAAPA DTYPATGPAD DEAPDAETTA AATTA, corresponding to amino acids 19-53 of Human SBEM (UniProt ID: Q96DR8). <a href="#">Run BLAST with ExPASy</a> <a href="#">Run BLAST with NCBI</a>
<b>Positive control</b>	Human breast tissue

### Properties

<b>Form</b>	Liquid
<b>Storage instructions</b>	Shipped at 4°C. Upon delivery aliquot and store at -20°C. Avoid freeze / thaw cycles.
<b>Storage buffer</b>	pH: 7.20 Preservative: 0.02% Sodium azide Constituents: 59% PBS, 40% Glycerol
<b>Purity</b>	Immunogen affinity purified
<b>Clonality</b>	Polyclonal
<b>Isotype</b>	IgG

### Applications

Our [Abpromise guarantee](#) covers the use of **ab122530** in the following tested applications.

The application notes include recommended starting dilutions; optimal dilutions/concentrations should be determined by the end user.

Application	Abreviews	Notes
IHC-P		1/20 - 1/50. Perform heat mediated antigen retrieval with citrate buffer pH 6 before commencing with IHC staining protocol.

## Target

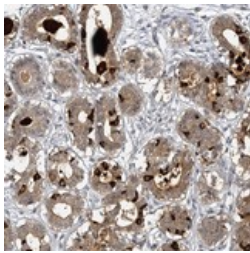
---

<b>Function</b>	May play a role as marker for the diagnosis of metastatic breast cancer.
<b>Tissue specificity</b>	Expressed in mammary, salivary glands and prostate. Also detected in lung. Mainly expressed in cancer cell lines of breast origin. Highly expressed in lymph node-positive compared with node-negative tumors. Detected in all lymph node containing metastatic cells.
<b>Post-translational modifications</b>	O-glycosylated.
<b>Cellular localization</b>	Secreted. Membrane.

---

## Images

---



Immunohistochemical staining of SBEM in paraffin embedded Human breast tissue by Immunohistochemistry, using ab122530 at a 1/20 dilution. The image shows moderate cytoplasmic and extracellular positivity in glandular cells.

Immunohistochemistry (Formalin/PFA-fixed paraffin-embedded sections) - Anti-SBEM antibody (ab122530)

**Please note:** All products are "FOR RESEARCH USE ONLY AND ARE NOT INTENDED FOR DIAGNOSTIC OR THERAPEUTIC USE"

## Our Abpromise to you: Quality guaranteed and expert technical support

---

- Replacement or refund for products not performing as stated on the datasheet
- Valid for 12 months from date of delivery
- Response to your inquiry within 24 hours
- We provide support in Chinese, English, French, German, Japanese and Spanish
- Extensive multi-media technical resources to help you
- We investigate all quality concerns to ensure our products perform to the highest standards

If the product does not perform as described on this datasheet, we will offer a refund or replacement. For full details of the Abpromise, please visit <https://www.abcam.com/abpromise> or contact our technical team.

## Terms and conditions

---

- Guarantee only valid for products bought direct from Abcam or one of our authorized distributors