




Product datasheet

Anti-Sly1 antibody ab86594

2 Images

Overview

Product name	Anti-Sly1 antibody
Description	Rabbit polyclonal to Sly1
Host species	Rabbit
Tested applications	Suitable for: WB, IP
Species reactivity	Reacts with: Mouse, Human Predicted to work with: Rat, Rabbit, Horse, Cow, Dog, Pig, Chimpanzee, Ferret, Rhesus monkey, Gorilla, Orangutan, Elephant 
Immunogen	Synthetic peptide corresponding to Human Sly1 aa 300-350 (internal sequence). Sequence: VENSFAGARPKRKNKKSVDLTPVDKFWQKHKGSPFP EVAESVQQELESYR A Database link: NP_057190.2  Run BLAST with  Run BLAST with
Positive control	Whole cell lysate from HeLa cells, 293T cells or NIH3T3 cells.
General notes	Previously labelled as SCFD1.

Properties

Form	Liquid
Storage instructions	Shipped at 4°C. Upon delivery aliquot and store at -20°C. Avoid freeze / thaw cycles.
Storage buffer	Preservative: 0.09% Sodium azide Constituents: 0.1% BSA, Tris buffered saline
Purity	Immunogen affinity purified
Clonality	Polyclonal
Isotype	IgG

Applications

Our [Abpromise guarantee](#) covers the use of **ab86594** in the following tested applications.

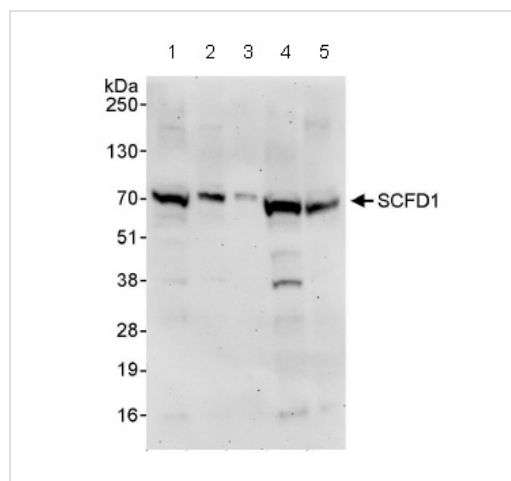
The application notes include recommended starting dilutions; optimal dilutions/concentrations should be determined by the end user.

Application	Abreviews	Notes
WB		1/2000 - 1/10000. Predicted molecular weight: 72 kDa.
IP		Use at 2-5 µg/mg of lysate.

Target

Function	Plays a role in SNARE-pin assembly and Golgi-to-ER retrograde transport via its interaction with COG4. Involved in vesicular transport between the endoplasmic reticulum and the Golgi.
Sequence similarities	Belongs to the STXBP/unc-18/SEC1 family.
Post-translational modifications	Phosphorylated upon DNA damage, probably by ATM or ATR.
Cellular localization	Cytoplasm. Endoplasmic reticulum membrane. Golgi apparatus > Golgi stack membrane.

Images



Western blot - Anti-Sly1 antibody (ab86594)

All lanes : Anti-Sly1 antibody (ab86594) at 0.04 µg/ml

Lane 1 : Whole cell lysate from HeLa cells at 50 µg

Lane 2 : Whole cell lysate from HeLa cells at 15 µg

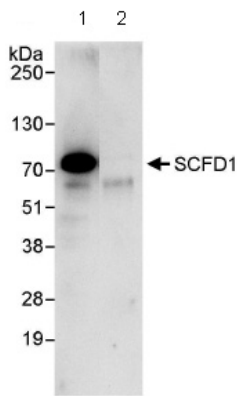
Lane 3 : Whole cell lysate from HeLa cells at 5 µg

Lane 4 : Whole cell lysate from 293T cells at 50 µg

Lane 5 : Whole cell lysate from NIH3T3 cells at 50 µg

Predicted band size: 72 kDa

Exposure time: 3 minutes



Immunoprecipitation - Anti-Sly1 antibody (ab86594)

1 mg whole cell lysate from HeLa cells was immunoprecipitated using 3 µg ab86594. 20% of IP was loaded per lane, and probed with ab86549 at 1 µg/ml (lane 1) or with a control IgG (lane 2).
Detection: chemiluminescence with an exposure time of 30 seconds.

Please note: All products are "FOR RESEARCH USE ONLY AND ARE NOT INTENDED FOR DIAGNOSTIC OR THERAPEUTIC USE"

Our Abpromise to you: Quality guaranteed and expert technical support

- Replacement or refund for products not performing as stated on the datasheet
- Valid for 12 months from date of delivery
- Response to your inquiry within 24 hours
- We provide support in Chinese, English, French, German, Japanese and Spanish
- Extensive multi-media technical resources to help you
- We investigate all quality concerns to ensure our products perform to the highest standards

If the product does not perform as described on this datasheet, we will offer a refund or replacement. For full details of the Abpromise, please visit <https://www.abcam.com/abpromise> or contact our technical team.

Terms and conditions

- Guarantee only valid for products bought direct from Abcam or one of our authorized distributors