

Product datasheet

Anti-SCP1 antibody ab111590

1 Image

Overview

<b>Product name</b>	Anti-SCP1 antibody
<b>Description</b>	Rabbit polyclonal to SCP1
<b>Host species</b>	Rabbit
<b>Tested applications</b>	<b>Suitable for:</b> WB
<b>Species reactivity</b>	<b>Reacts with:</b> Human
<b>Immunogen</b>	Recombinant fragment, corresponding to a region within amino acids 688-950 of Human SCP1 (NP_003167).
<b>Positive control</b>	U-87 MG and MCF7 whole cell lysates.

Properties

<b>Form</b>	Liquid
<b>Storage instructions</b>	Shipped at 4°C. Upon delivery aliquot and store at -20°C or -80°C. Avoid repeated freeze / thaw cycles.
<b>Storage buffer</b>	pH: 7.00 Preservative: 0.01% Thimerosal (merthiolate) Constituents: 1.21% Tris, 0.75% Glycine, 20% Glycerol
<b>Purity</b>	Immunogen affinity purified
<b>Purification notes</b>	ab111590 is purified by antigen affinity chromatography.
<b>Clonality</b>	Polyclonal
<b>Isotype</b>	IgG

Applications

Our [Abpromise guarantee](#) covers the use of **ab111590** in the following tested applications.

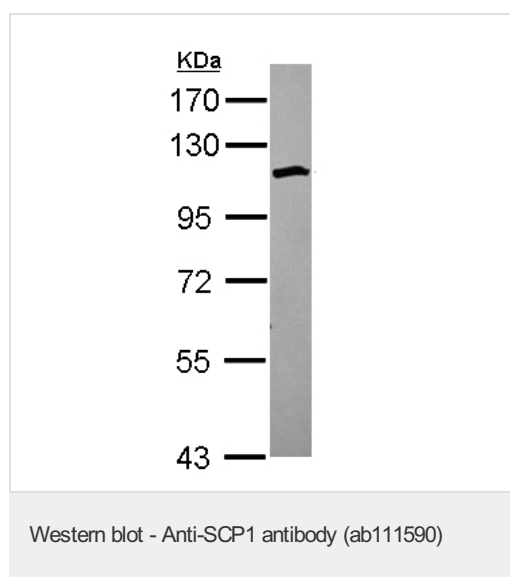
The application notes include recommended starting dilutions; optimal dilutions/concentrations should be determined by the end user.

Application	Abreviews	Notes
WB		1/500 - 1/3000. Predicted molecular weight: 114 kDa.

## Target

<b>Function</b>	Major component of the transverse filaments of synaptonemal complexes (SCS), formed between homologous chromosomes during meiotic prophase.
<b>Tissue specificity</b>	Testis.
<b>Domain</b>	Consists of an alpha-helical stretch of 700 AA residues, flanked by N- and C-terminal globular domains. The C-terminal domain has DNA-binding capacity.
<b>Cellular localization</b>	Nucleus. Chromosome. In tripartite segments of synaptonemal complexes, between lateral elements in the nucleus. Found only where the chromosome cores are synapsed. Its N-terminus is found towards the center of the synaptonemal complex while the C-terminus extends well into the lateral domain of the synaptonemal complex.

## Images



Anti-SCP1 antibody (ab111590) at 1/1000 dilution + MCF7 whole cell lysate at 30 µg

**Predicted band size:** 114 kDa

7.5% SDS-PAGE.

**Please note:** All products are "FOR RESEARCH USE ONLY AND ARE NOT INTENDED FOR DIAGNOSTIC OR THERAPEUTIC USE"

## Our Abpromise to you: Quality guaranteed and expert technical support

- Replacement or refund for products not performing as stated on the datasheet
- Valid for 12 months from date of delivery
- Response to your inquiry within 24 hours
- We provide support in Chinese, English, French, German, Japanese and Spanish
- Extensive multi-media technical resources to help you
- We investigate all quality concerns to ensure our products perform to the highest standards

If the product does not perform as described on this datasheet, we will offer a refund or replacement. For full details of the Abpromise, please visit <https://www.abcam.com/abpromise> or contact our technical team.

## Terms and conditions

- Guarantee only valid for products bought direct from Abcam or one of our authorized distributors