


Product datasheet

Anti-SERCA1 ATPase antibody ab105172

1 Image

Overview

<b>Product name</b>	Anti-SERCA1 ATPase antibody
<b>Description</b>	Rabbit polyclonal to SERCA1 ATPase
<b>Host species</b>	Rabbit
<b>Tested applications</b>	<b>Suitable for:</b> WB
<b>Species reactivity</b>	<b>Reacts with:</b> Mouse, Rat, Human <b>Predicted to work with:</b> Gorilla 
<b>Immunogen</b>	Synthetic peptide conjugated to KLH derived from within residues 1 - 100 of Human SERCA1 ATPase. Read Abcam's proprietary immunogen policy
<b>Positive control</b>	This antibody gave a positive signal in Human, Mouse and Rat Skeletal Muscle tissue lysates.

Properties

<b>Form</b>	Liquid
<b>Storage instructions</b>	Shipped at 4°C. Store at +4°C short term (1-2 weeks). Upon delivery aliquot. Store at -20°C or -80°C. Avoid freeze / thaw cycle.
<b>Storage buffer</b>	pH: 7.40 Preservative: 0.02% Sodium azide Constituent: PBS Note: Batches of this product that have a concentration < 1mg/ml may have BSA added as a stabilising agent. If you would like information about the formulation of a specific lot, please contact our scientific support team who will be happy to help.
<b>Purity</b>	Immunogen affinity purified
<b>Clonality</b>	Polyclonal
<b>Isotype</b>	IgG

Applications

Our [Abpromise guarantee](#) covers the use of **ab105172** in the following tested applications.

The application notes include recommended starting dilutions; optimal dilutions/concentrations should be determined by the end user.

Application	Abreviews	Notes
WB		Use a concentration of 1 µg/ml. Detects a band of approximately 99 kDa (predicted molecular weight: 110 kDa).

---

## Target

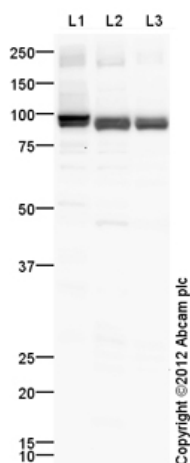
---

<b>Function</b>	Key regulator of striated muscle performance by acting as the major Ca(2+) ATPase responsible for the reuptake of cytosolic Ca(2+) into the sarcoplasmic reticulum. Catalyzes the hydrolysis of ATP coupled with the translocation of calcium from the cytosol to the sarcoplasmic reticulum lumen. Contributes to calcium sequestration involved in muscular excitation/contraction.
<b>Tissue specificity</b>	Skeletal muscle, fast twitch muscle (type II) fibers.
<b>Involvement in disease</b>	Brody myopathy
<b>Sequence similarities</b>	Belongs to the cation transport ATPase (P-type) (TC 3.A.3) family. Type IIA subfamily.
<b>Developmental stage</b>	Isoform SERCA1A accounts for more than 99% of SERCA1 isoforms expressed in adult skeletal muscle, while isoform SERCA1B predominates in neo-natal skeletal muscle.
<b>Cellular localization</b>	Endoplasmic reticulum membrane. Sarcoplasmic reticulum membrane.

---

## Images

---



Western blot - Anti-SERCA1 ATPase antibody  
(ab105172)

**All lanes :** Anti-SERCA1 ATPase antibody

(ab105172) at 1 µg/ml

**Lane 1 :** Human skeletal muscle tissue lysate

- total protein (ab29330)

**Lane 2 :** Skeletal Muscle (Mouse) Tissue

Lysate

**Lane 3 :** Skeletal Muscle (Rat) Tissue Lysate

Lysates/proteins at 10 µg per lane.

### Secondary

**All lanes :** Goat Anti-Rabbit IgG H&L (HRP)

preadsorbed (ab97080) at 1/5000 dilution

Developed using the ECL technique.

Performed under reducing conditions.

**Predicted band size:** 110 kDa

**Observed band size:** 99 kDa

**Exposure time:** 2 minutes

The predicted molecular weight of SERCA1 ATPase is 110 kDa (SwissProt), however we expect to observe a banding pattern at 99 kDa. Abcam welcomes customer feedback and would appreciate any comments regarding this product and the data presented above.

**Please note:** All products are "FOR RESEARCH USE ONLY AND ARE NOT INTENDED FOR DIAGNOSTIC OR THERAPEUTIC USE"

### Our Abpromise to you: Quality guaranteed and expert technical support

- Replacement or refund for products not performing as stated on the datasheet
- Valid for 12 months from date of delivery
- Response to your inquiry within 24 hours
- We provide support in Chinese, English, French, German, Japanese and Spanish
- Extensive multi-media technical resources to help you

- We investigate all quality concerns to ensure our products perform to the highest standards

If the product does not perform as described on this datasheet, we will offer a refund or replacement. For full details of the Abpromise, please visit <https://www.abcam.com/abpromise> or contact our technical team.

### **Terms and conditions**

---

- Guarantee only valid for products bought direct from Abcam or one of our authorized distributors