

Product datasheet

Anti-SLAIN1 antibody ab103640

2 Images

Overview

Product name	Anti-SLAIN1 antibody
Description	Rabbit polyclonal to SLAIN1
Host species	Rabbit
Tested applications	Suitable for: WB, IHC-P
Species reactivity	Reacts with: Hamster, Human
Immunogen	Synthetic peptide conjugated to KLH, corresponding to a region within C terminal amino acids 380-410 of Human SLAIN1
Positive control	CHO cell lysate, Human brain tissue

Properties

Form	Liquid
Storage instructions	Shipped at 4°C. Store at 4°C (up to 6 months). Store at -20°C long term.
Storage buffer	Preservative: 0.09% Sodium Azide Constituents: PBS
Purity	Immunogen affinity purified
Purification notes	This antibody is purified through a protein A column, followed by peptide affinity purification.
Clonality	Polyclonal
Isotype	IgG

Applications

Our [Abpromise guarantee](#) covers the use of **ab103640** in the following tested applications.

The application notes include recommended starting dilutions; optimal dilutions/concentrations should be determined by the end user.

Application	Abreviews	Notes
WB		1/100 - 1/500. Predicted molecular weight: 61 kDa.
IHC-P		1/50 - 1/100. Perform heat mediated antigen retrieval with citrate buffer pH 6 before commencing with IHC staining protocol.

Target

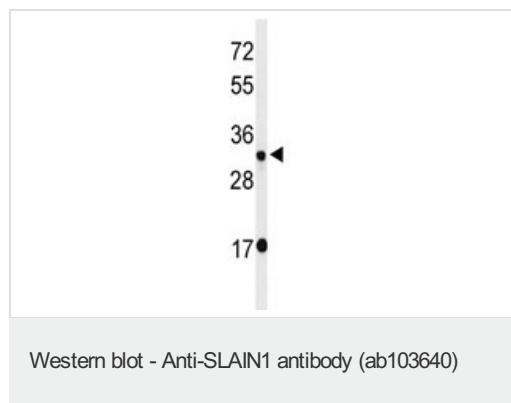
Tissue specificity

Expressed in embryonic stem cells.

Sequence similarities

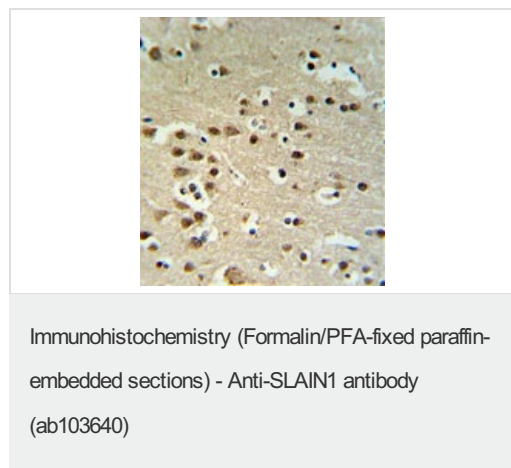
Belongs to the SLAIN motif-containing family.

Images



Anti-SLAIN1 antibody (ab103640) at 1/100 dilution + CHO cell lysate at 35 µg

Predicted band size: 61 kDa



IHC analysis in formalin fixed and paraffin embedded Human brain tissue followed by peroxidase conjugation of the secondary antibody and DAB staining, using ab103640 at a dilution of 1/50.

Please note: All products are "FOR RESEARCH USE ONLY AND ARE NOT INTENDED FOR DIAGNOSTIC OR THERAPEUTIC USE"

Our Abpromise to you: Quality guaranteed and expert technical support

- Replacement or refund for products not performing as stated on the datasheet
- Valid for 12 months from date of delivery
- Response to your inquiry within 24 hours
- We provide support in Chinese, English, French, German, Japanese and Spanish
- Extensive multi-media technical resources to help you
- We investigate all quality concerns to ensure our products perform to the highest standards

If the product does not perform as described on this datasheet, we will offer a refund or replacement. For full details of the Abpromise, please visit <https://www.abcam.com/abpromise> or contact our technical team.

Terms and conditions

- Guarantee only valid for products bought direct from Abcam or one of our authorized distributors