

Product datasheet

Anti-SLC15A1 antibody ab78020

[2 References](#) [1 Image](#)

Overview

Product name	Anti-SLC15A1 antibody
Description	Rabbit polyclonal to SLC15A1
Host species	Rabbit
Tested applications	Suitable for: WB, ELISA, IHC-P
Species reactivity	Reacts with: Human
Immunogen	Synthetic peptide from the C terminal region of Human SLC15A1
Positive control	IHC-P: Human brain cerebellum tissue.

Properties

Form	Liquid
Storage instructions	Shipped at 4°C. Upon delivery aliquot and store at -20°C. Avoid repeated freeze / thaw cycles.
Storage buffer	Preservative: 0.01% Sodium Azide Constituents: 50% Glycerol, PBS
Purity	Immunogen affinity purified
Clonality	Polyclonal
Isotype	IgG

Applications

Our [Abpromise guarantee](#) covers the use of **ab78020** in the following tested applications.

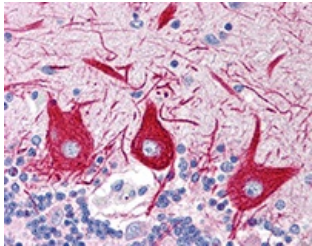
The application notes include recommended starting dilutions; optimal dilutions/concentrations should be determined by the end user.

Application	Abreviews	Notes
WB		Use a concentration of 1 µg/ml. Predicted molecular weight: 79 kDa.
ELISA		Use a concentration of 1 µg/ml.
IHC-P		Use a concentration of 10 µg/ml.

Target

Function	Proton-coupled intake of oligopeptides of 2 to 4 amino acids with a preference for dipeptides. May constitute a major route for the absorption of protein digestion end-products.
Sequence similarities	Belongs to the PTR2/POT transporter (TC 2.A.17) family.
Cellular localization	Membrane.

Images



Immunohistochemistry analysis of formalin-fixed, paraffin-embedded Human brain cerebellum tissue using 10µg/ml [ab78017](#).

Immunohistochemistry (Formalin/PFA-fixed paraffin-embedded sections) - Anti-SLC15A1 antibody (ab78020)

Please note: All products are "FOR RESEARCH USE ONLY AND ARE NOT INTENDED FOR DIAGNOSTIC OR THERAPEUTIC USE"

Our Abpromise to you: Quality guaranteed and expert technical support

- Replacement or refund for products not performing as stated on the datasheet
- Valid for 12 months from date of delivery
- Response to your inquiry within 24 hours
- We provide support in Chinese, English, French, German, Japanese and Spanish
- Extensive multi-media technical resources to help you
- We investigate all quality concerns to ensure our products perform to the highest standards

If the product does not perform as described on this datasheet, we will offer a refund or replacement. For full details of the Abpromise, please visit <https://www.abcam.com/abpromise> or contact our technical team.

Terms and conditions

- Guarantee only valid for products bought direct from Abcam or one of our authorized distributors