


## Product datasheet

# Anti-SLC25A28 antibody ab90170

[1 Abreviews](#) [1 Image](#)

### Overview

<b>Product name</b>	Anti-SLC25A28 antibody
<b>Description</b>	Rabbit polyclonal to SLC25A28
<b>Host species</b>	Rabbit
<b>Tested applications</b>	<b>Suitable for:</b> WB
<b>Species reactivity</b>	<b>Reacts with:</b> Human <b>Predicted to work with:</b> Mouse, Rat, Rabbit, Horse, Guinea pig, Cow, Cat, Dog, Pig 
<b>Immunogen</b>	Synthetic peptide corresponding to a region within the internal amino acids 216-265 (WQNEGAGAFY RSYTTQLTMN VPFQAIHFMT YEFLQEHFNP QRRYNPSSHV) of Human SLC25A28 (NP_112489). <a href="#">Run BLAST with ExPASy</a> <a href="#">Run BLAST with NCBI</a>
<b>Positive control</b>	Human fetal stomach lysate

### Properties

<b>Form</b>	Liquid
<b>Storage instructions</b>	Shipped at 4°C. Upon delivery aliquot and store at -20°C. Avoid repeated freeze / thaw cycles.
<b>Storage buffer</b>	Preservative: 0.09% Sodium azide Constituents: PBS, 2% Sucrose
<b>Purity</b>	Immunogen affinity purified
<b>Purification notes</b>	Purified by peptide affinity chromatography method.
<b>Clonality</b>	Polyclonal
<b>Isotype</b>	IgG

### Applications

Our [Abpromise guarantee](#) covers the use of **ab90170** in the following tested applications.

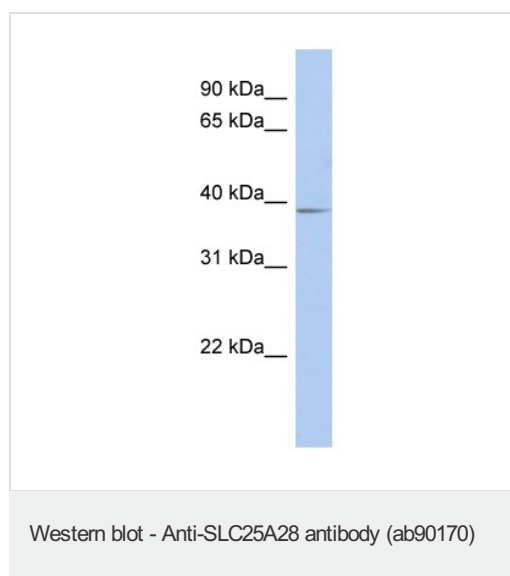
The application notes include recommended starting dilutions; optimal dilutions/concentrations should be determined by the end user.

Application	Abreviews	Notes
WB		Use a concentration of 1 µg/ml. Predicted molecular weight: 39 kDa. Good results were obtained when blocked with 5% non-fat dry milk in 0.05% PBS-T.

## Target

<b>Relevance</b>	SLC25A28 is a mitochondrial iron transporter that mediates iron uptake. It is probably required for heme synthesis of hemoproteins and Fe-S cluster assembly in non-erythroid cells.
<b>Cellular localization</b>	Mitochondrion inner membrane; Multi pass membrane protein. Note: Isoform 1 and isoform 2 are both localized in the mitochondrion.

## Images



Anti-SLC25A28 antibody (ab90170) at 1 µg/ml (in 5% skim milk / PBS buffer) + human fetal stomach lysate at 10 µg

### Secondary

HRP conjugated anti-Rabbit IgG at 1/50000 dilution

**Predicted band size:** 39 kDa

Gel concentration: 12%

**Please note:** All products are "FOR RESEARCH USE ONLY AND ARE NOT INTENDED FOR DIAGNOSTIC OR THERAPEUTIC USE"

## Our Abpromise to you: Quality guaranteed and expert technical support

- Replacement or refund for products not performing as stated on the datasheet
- Valid for 12 months from date of delivery
- Response to your inquiry within 24 hours
- We provide support in Chinese, English, French, German, Japanese and Spanish
- Extensive multi-media technical resources to help you
- We investigate all quality concerns to ensure our products perform to the highest standards

If the product does not perform as described on this datasheet, we will offer a refund or replacement. For full details of the Abpromise, please visit <https://www.abcam.com/abpromise> or contact our technical team.

## Terms and conditions

---

- Guarantee only valid for products bought direct from Abcam or one of our authorized distributors