

Product datasheet

Anti-SLC35F5 antibody ab69822

1 Image

Overview

Product name	Anti-SLC35F5 antibody
Description	Rabbit polyclonal to SLC35F5
Host species	Rabbit
Tested applications	Suitable for: WB, ELISA
Species reactivity	Reacts with: Human Predicted to work with: Mouse, Rat, Rabbit, Horse, Guinea pig, Cow, Cat, Dog
Immunogen	A region within synthetic peptide: MFFGFVGLFN LLLLWPGFFL LHYTGFEDFE FPNKVVLMLCI IINGLIGTVL, corresponding to internal/c-terminal amino acids 361-410 of Human SLC35F5 Run BLAST with ExPASy Run BLAST with NCBI

Properties

Form	Liquid
Storage instructions	Shipped at 4°C. Upon delivery aliquot and store at -20°C or -80°C. Avoid repeated freeze / thaw cycles.
Storage buffer	Preservative: None Constituents: 2% Sucrose, PBS
Purity	Protein A purified
Clonality	Polyclonal
Isotype	IgG

Applications

Our [Abpromise guarantee](#) covers the use of **ab69822** in the following tested applications.

The application notes include recommended starting dilutions; optimal dilutions/concentrations should be determined by the end user.

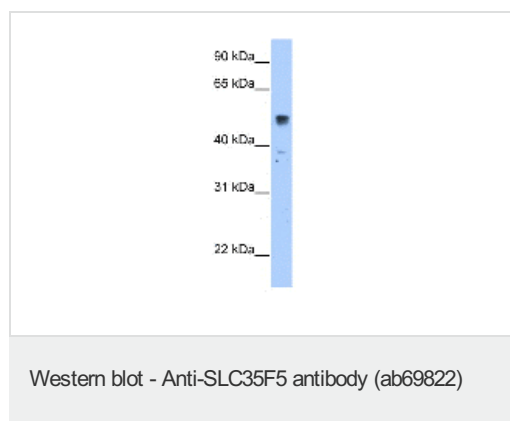
Application	Abreviews	Notes
WB		Use a concentration of 2.5 µg/ml. Detects a band of approximately 52 kDa (predicted molecular weight: 59 kDa). Good results were obtained when blocked with 5% non-fat dry milk in 0.05% PBS-T.

Application	Abreviews	Notes
ELISA		Use at an assay dependent concentration. ELISA titre using peptide based assay: 1:1562500.

Target

Function	Putative solute transporter.
Tissue specificity	Expressed in colorectal cancer cells.
Sequence similarities	Belongs to the SLC35F solute transporter family. Contains 1 DUF6 domain.
Cellular localization	Membrane.

Images



Anti-SLC35F5 antibody (ab69822) at 2.5 µg +
transfected 293T cell lysate at 10 µg

Secondary

HRP conjugated anti-Rabbit IgG at 1/50000
dilution

Predicted band size: 59 kDa

Observed band size: 52 kDa

Gel concentration: 12%

Please note: All products are "FOR RESEARCH USE ONLY AND ARE NOT INTENDED FOR DIAGNOSTIC OR THERAPEUTIC USE"

Our Abpromise to you: Quality guaranteed and expert technical support

- Replacement or refund for products not performing as stated on the datasheet
- Valid for 12 months from date of delivery
- Response to your inquiry within 24 hours
- We provide support in Chinese, English, French, German, Japanese and Spanish
- Extensive multi-media technical resources to help you
- We investigate all quality concerns to ensure our products perform to the highest standards

If the product does not perform as described on this datasheet, we will offer a refund or replacement. For full details of the Abpromise, please visit <https://www.abcam.com/abpromise> or contact our technical team.

Terms and conditions

- Guarantee only valid for products bought direct from Abcam or one of our authorized distributors