

## Product datasheet

# Anti-SLC40A1 antibody ab58695

[1 Abreviews](#) [5 References](#) [1 Image](#)

### Overview

<b>Product name</b>	Anti-SLC40A1 antibody
<b>Description</b>	Rabbit polyclonal to SLC40A1
<b>Host species</b>	Rabbit
<b>Tested applications</b>	<b>Suitable for:</b> WB, ELISA
<b>Species reactivity</b>	<b>Reacts with:</b> Rat, Human <b>Predicted to work with:</b> Mouse
<b>Immunogen</b>	Synthetic peptide corresponding to N-terminal residues of human SLC40A1 <a href="#">Run BLAST with ExPASy</a> <a href="#">Run BLAST with NCBI</a>
<b>Positive control</b>	liver

### Properties

<b>Form</b>	Liquid
<b>Storage instructions</b>	Shipped at 4°C. Upon delivery aliquot and store at -20°C. Avoid freeze / thaw cycles.
<b>Storage buffer</b>	Preservative: 0.01% Sodium Azide Constituents: 50% Glycerol, PBS
<b>Purity</b>	Immunogen affinity purified
<b>Clonality</b>	Polyclonal
<b>Isotype</b>	IgG

### Applications

Our [Abpromise guarantee](#) covers the use of **ab58695** in the following tested applications.

The application notes include recommended starting dilutions; optimal dilutions/concentrations should be determined by the end user.

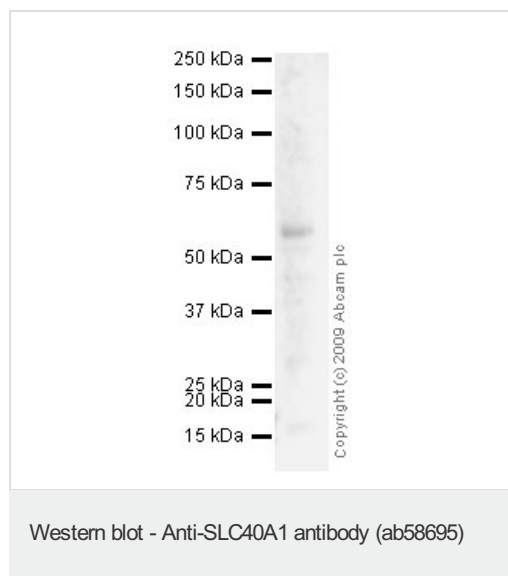
Application	Abreviews	Notes
WB		Use a concentration of 1 µg/ml. Detects a band of approximately 69 kDa (predicted molecular weight: 62-69 kDa). Incubate for 2hrs

Application	Abreviews	Notes
ELISA		Use at an assay dependent concentration.

## Target

<b>Function</b>	May be involved in iron export from duodenal epithelial cell and also in transfer of iron between maternal and fetal circulation. Mediates iron efflux in the presence of a ferroxidase (hephaestin and/or ceruloplasmin).
<b>Tissue specificity</b>	Expressed in placenta, intestine, muscle and spleen.
<b>Involvement in disease</b>	Defects in SLC40A1 are the cause of hemochromatosis type 4 (HFE4) [MIM:606069]. HFE4 is an autosomal dominant iron-loading disorder characterized by early iron accumulation in reticuloendothelial cells and a marked increase in serum ferritin before elevation of the transferrin saturation.
<b>Sequence similarities</b>	Belongs to the SLC40A transporter family.
<b>Cellular localization</b>	Cell membrane. Localized to the basolateral membrane of polarized epithelial cells.

## Images



Anti-SLC40A1 antibody (ab58695) at 1 µg/ml  
+ Human colon tissue lysate - total protein  
(ab30051) at 10 µg

### Secondary

Goat polyclonal to Rabbit IgG - H&L - Pre-Adsorbed (HRP) at 1/3000 dilution

**Predicted band size:** 62-69 kDa

**Observed band size:** 62 kDa

**Please note:** All products are "FOR RESEARCH USE ONLY AND ARE NOT INTENDED FOR DIAGNOSTIC OR THERAPEUTIC USE"

## Our Abpromise to you: Quality guaranteed and expert technical support

- Replacement or refund for products not performing as stated on the datasheet
- Valid for 12 months from date of delivery
- Response to your inquiry within 24 hours
- We provide support in Chinese, English, French, German, Japanese and Spanish
- Extensive multi-media technical resources to help you

- We investigate all quality concerns to ensure our products perform to the highest standards

If the product does not perform as described on this datasheet, we will offer a refund or replacement. For full details of the Abpromise, please visit <https://www.abcam.com/abpromise> or contact our technical team.

### **Terms and conditions**

---

- Guarantee only valid for products bought direct from Abcam or one of our authorized distributors