


Product datasheet

Anti-SLC9A8 antibody ab83937

1 Image

Overview

Product name	Anti-SLC9A8 antibody
Description	Rabbit polyclonal to SLC9A8
Host species	Rabbit
Tested applications	Suitable for: WB, ELISA
Species reactivity	Reacts with: Human Predicted to work with: Mouse, Rat, Rabbit, Horse, Chicken, Guinea pig, Cow, Cat, Dog, Zebrafish 
Immunogen	Synthetic peptide from within internal sequence amino acids 531-580: AKYLNPFSTR RLTQEDLHHG RIQMKLTNWK WYEEVRQGSP GSEDDEQELL, of Human SLC9A8 (NP_056081)
Positive control	HepG2 cell lysate

Properties

Form	Liquid
Storage instructions	Shipped at 4°C. Upon delivery aliquot and store at -20°C or -80°C. Avoid repeated freeze / thaw cycles.
Storage buffer	Preservative: 0.09% Sodium azide Constituents: 2% Sucrose, PBS
Purity	Immunogen affinity purified
Clonality	Polyclonal
Isotype	IgG

Applications

Our [Abpromise guarantee](#) covers the use of **ab83937** in the following tested applications.

The application notes include recommended starting dilutions; optimal dilutions/concentrations should be determined by the end user.

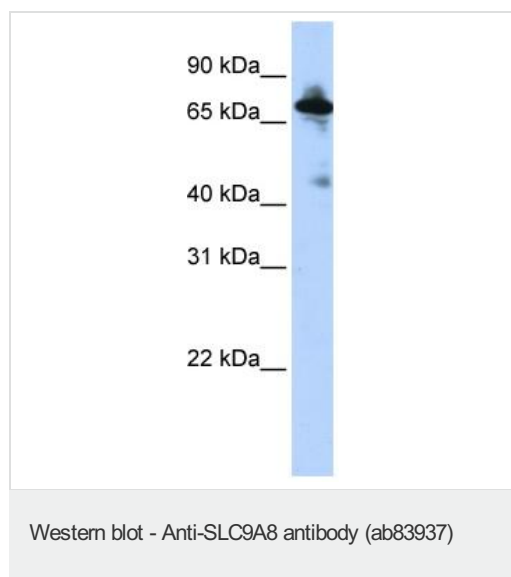
Application	Abreviews	Notes
-------------	-----------	-------

Application	Abreviews	Notes
WB		Use a concentration of 1 µg/ml. Predicted molecular weight: 65 kDa. Good results were obtained when blocked with 5% non-fat dry milk in 0.05% PBS-T.
ELISA		Use at an assay dependent concentration. ELISA titre using peptide based assay: 1:312500.

Target

Function	Involved in pH regulation to eliminate acids generated by active metabolism or to counter adverse environmental conditions. Major proton extruding system driven by the inward sodium ion chemical gradient. Plays an important role in signal transduction.
Tissue specificity	Ubiquitous. Strongly expressed in skeletal muscle and kidney.
Sequence similarities	Belongs to the monovalent cation:proton antiporter 1 (CPA1) transporter (TC 2.A.36) family.
Cellular localization	Golgi apparatus membrane.

Images



Anti-SLC9A8 antibody (ab83937) at 1 µg/ml
(in 5% skim milk/ PBS buffer) + HepG2 cell
lysate at 10 µg with gel concentration: 12%

Secondary

HRP conjugated anti-Rabbit IgG at 1/50000
dilution

Predicted band size: 65 kDa

Observed band size: 75 kDa

Additional bands at: 46 kDa. We are unsure
as to the identity of these extra bands.

Please note: All products are "FOR RESEARCH USE ONLY AND ARE NOT INTENDED FOR DIAGNOSTIC OR THERAPEUTIC USE"

Our Abpromise to you: Quality guaranteed and expert technical support

- Replacement or refund for products not performing as stated on the datasheet
- Valid for 12 months from date of delivery
- Response to your inquiry within 24 hours
- We provide support in Chinese, English, French, German, Japanese and Spanish
- Extensive multi-media technical resources to help you

- We investigate all quality concerns to ensure our products perform to the highest standards

If the product does not perform as described on this datasheet, we will offer a refund or replacement. For full details of the Abpromise, please visit <https://www.abcam.com/abpromise> or contact our technical team.

Terms and conditions

- Guarantee only valid for products bought direct from Abcam or one of our authorized distributors