

Product datasheet

Anti-SLITRK5 antibody ab67309

1 References 2 Images

Overview

Product name	Anti-SLITRK5 antibody
Description	Rabbit polyclonal to SLITRK5
Host species	Rabbit
Specificity	ab67309 is predicted to have no cross-reactivity to other SLITRK proteins.
Tested applications	Suitable for: WB, ICC/IF
Species reactivity	Reacts with: Mouse, Rat, Human
Immunogen	A 14 amino acid synthetic peptide from near the center of human SLITRK5.
Positive control	3T3 cell lysate.

Properties

Form	Liquid
Storage instructions	Shipped at 4°C. Store at +4°C.
Storage buffer	Preservative: 0.02% Sodium azide Constituent: PBS
Purity	Immunogen affinity purified
Clonality	Polyclonal
Isotype	IgG

Applications

Our [Abpromise guarantee](#) covers the use of **ab67309** in the following tested applications.

The application notes include recommended starting dilutions; optimal dilutions/concentrations should be determined by the end user.

Application	Abreviews	Notes
WB		Use a concentration of 0.5 - 1 µg/ml. Detects a band of approximately 160 kDa (predicted molecular weight: 107 kDa).
ICC/IF		Use a concentration of 20 µg/ml.

Target

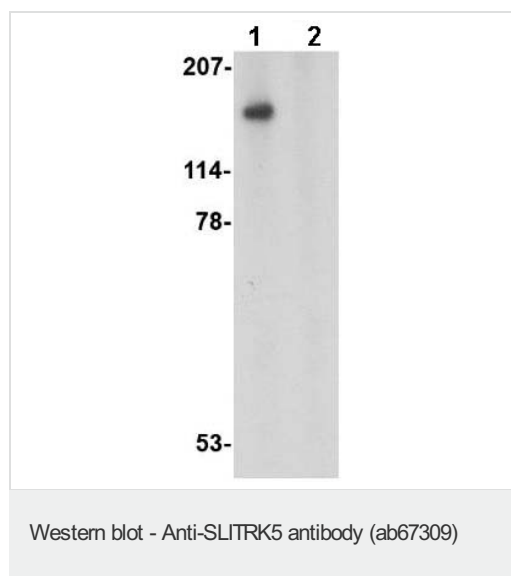
Relevance

SLIT and NTRK-like family 5 (SLITRK5) is a member a protein family consisting of six homologous transmembrane proteins (SLITRK1-6) that share two conserved leucine-rich repeat domains in the extracellular domain and have significant homology to Slit, a secreted axonal growth-controlling protein. These proteins are also homologous to trk neurotrophin receptors in their intracellular domains. Expression of SLITRK proteins is highly restricted to neural and brain tumor tissues, but varies within the protein family. Like every other SLITRK protein except SLITRK1, overexpression of SLITRK5 inhibited neurite outgrowth in cultured neurons, suggesting that these proteins are involved in the control of neurite outgrowth.

Cellular localization

Membrane; Single-pass type I membrane protein.

Images



All lanes : Anti-SLITRK5 antibody (ab67309) at 1 µg/ml

Lane 1 : 3T3 cell lysate with no blocking peptide

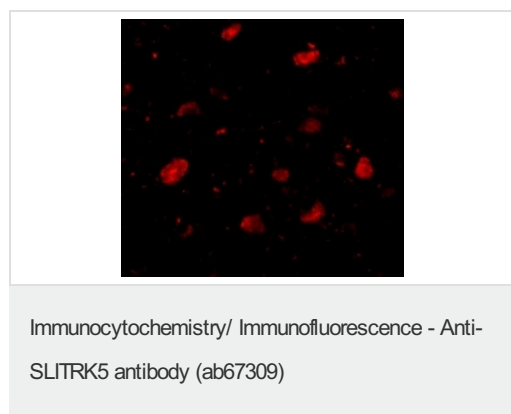
Lane 2 : 3T3 cell lysate with blocking peptide

Lysates/proteins at 15 µg per lane.

Predicted band size: 107 kDa

Observed band size: 160 kDa

[why is the actual band size different from the predicted?](#)



Immunofluorescence of SLITRK5 in Human Brain cells using ab67309 at 5 µg/ml.

Please note: All products are "FOR RESEARCH USE ONLY AND ARE NOT INTENDED FOR DIAGNOSTIC OR THERAPEUTIC USE"

Our Abpromise to you: Quality guaranteed and expert technical support

- Replacement or refund for products not performing as stated on the datasheet
- Valid for 12 months from date of delivery

- Response to your inquiry within 24 hours
- We provide support in Chinese, English, French, German, Japanese and Spanish
- Extensive multi-media technical resources to help you
- We investigate all quality concerns to ensure our products perform to the highest standards

If the product does not perform as described on this datasheet, we will offer a refund or replacement. For full details of the Abpromise, please visit <https://www.abcam.com/abpromise> or contact our technical team.

Terms and conditions

- Guarantee only valid for products bought direct from Abcam or one of our authorized distributors