

## Product datasheet

# Anti-SMCR7 antibody ab101350

★★★★☆ 1 Abreviews 1 Image

### Overview

<b>Product name</b>	Anti-SMCR7 antibody
<b>Description</b>	Rabbit polyclonal to SMCR7
<b>Host species</b>	Rabbit
<b>Tested applications</b>	<b>Suitable for:</b> WB
<b>Species reactivity</b>	<b>Reacts with:</b> Rat, Human
<b>Immunogen</b>	Recombinant fragment, corresponding to a region within amino acids 299-441 of Human SMCR7 (AAH14973).
<b>Positive control</b>	293T, A431, Jurkat and Raji whole cell lysates.

### Properties

<b>Form</b>	Liquid
<b>Storage instructions</b>	Shipped at 4°C. Upon delivery aliquot and store at -20°C or -80°C. Avoid repeated freeze / thaw cycles.
<b>Storage buffer</b>	pH: 7.00 Preservative: 0.01% Thimerosal (merthiolate) Constituents: 1.21% Tris, 0.75% Glycine, 20% Glycerol
<b>Purity</b>	Immunogen affinity purified
<b>Clonality</b>	Polyclonal
<b>Isotype</b>	IgG

### Applications

Our [Abpromise guarantee](#) covers the use of **ab101350** in the following tested applications.

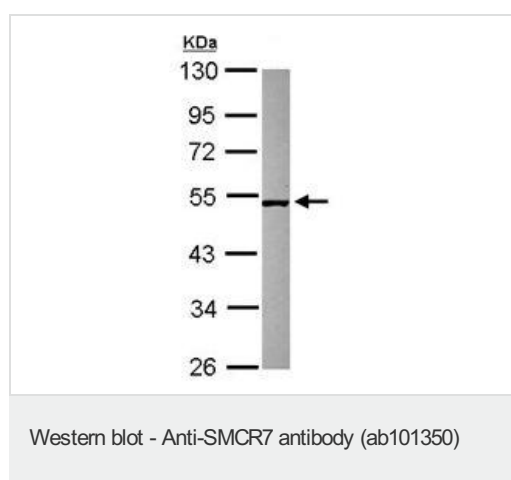
The application notes include recommended starting dilutions; optimal dilutions/concentrations should be determined by the end user.

Application	Abreviews	Notes
WB	★★★★☆	1/500 - 1/3000. Predicted molecular weight: 49 kDa.

## Target

<b>Function</b>	Mitochondrial outer membrane protein which regulates mitochondrial fission. Promotes the recruitment and association of the fission mediator dynamin-related protein 1 (DNM1L) to the mitochondrial surface independently of the mitochondrial fission FIS1 and MFF proteins. Regulates DNM1L GTPase activity.
<b>Tissue specificity</b>	Expressed in all tissues tested with highest expression in heart and skeletal muscle.
<b>Sequence similarities</b>	Belongs to the MID49/MID51 family.
<b>Cellular localization</b>	Mitochondrion outer membrane. Colocalizes with DNM1L at mitochondrial membrane. Forms foci and rings around mitochondria.

## Images



Anti-SMCR7 antibody (ab101350) at 1/500 dilution + Raji whole cell lysate at 30  $\mu$ g

**Predicted band size:** 49 kDa

10% SDS PAGE

**Please note:** All products are "FOR RESEARCH USE ONLY AND ARE NOT INTENDED FOR DIAGNOSTIC OR THERAPEUTIC USE"

## Our Abpromise to you: Quality guaranteed and expert technical support

- Replacement or refund for products not performing as stated on the datasheet
- Valid for 12 months from date of delivery
- Response to your inquiry within 24 hours
- We provide support in Chinese, English, French, German, Japanese and Spanish
- Extensive multi-media technical resources to help you
- We investigate all quality concerns to ensure our products perform to the highest standards

If the product does not perform as described on this datasheet, we will offer a refund or replacement. For full details of the Abpromise, please visit <https://www.abcam.com/abpromise> or contact our technical team.

## Terms and conditions

- Guarantee only valid for products bought direct from Abcam or one of our authorized distributors