

## Product datasheet

# Anti-SMPDL3A antibody ab104049

[2 Images](#)

### Overview

<b>Product name</b>	Anti-SMPDL3A antibody
<b>Description</b>	Rabbit polyclonal to SMPDL3A
<b>Host species</b>	Rabbit
<b>Tested applications</b>	<b>Suitable for:</b> WB, IHC-P
<b>Species reactivity</b>	<b>Reacts with:</b> Human
<b>Immunogen</b>	Synthetic peptide corresponding to a region within C terminal amino acids 330-360 of Human SMPDL3A, conjugated to KLH.
<b>Positive control</b>	MDA-MB435 cell line lysates; Human breast carcinoma

### Properties

<b>Form</b>	Liquid
<b>Storage instructions</b>	Shipped at 4°C. Store at 4°C (up to 6 months). Store at -20°C long term.
<b>Storage buffer</b>	Preservative: 0.09% Sodium Azide Constituents: PBS
<b>Purity</b>	Immunogen affinity purified
<b>Purification notes</b>	This antibody is purified through a protein A column, followed by peptide affinity purification.
<b>Clonality</b>	Polyclonal
<b>Isotype</b>	IgG

### Applications

Our [Abpromise guarantee](#) covers the use of **ab104049** in the following tested applications.

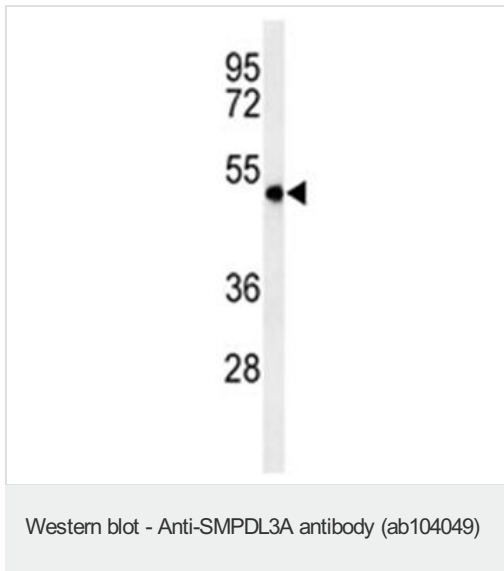
The application notes include recommended starting dilutions; optimal dilutions/concentrations should be determined by the end user.

Application	Abreviews	Notes
WB		1/100 - 1/500. Predicted molecular weight: 51 kDa.
IHC-P		1/50 - 1/100. Perform heat mediated antigen retrieval with citrate buffer pH 6 before commencing with IHC staining protocol.

## Target

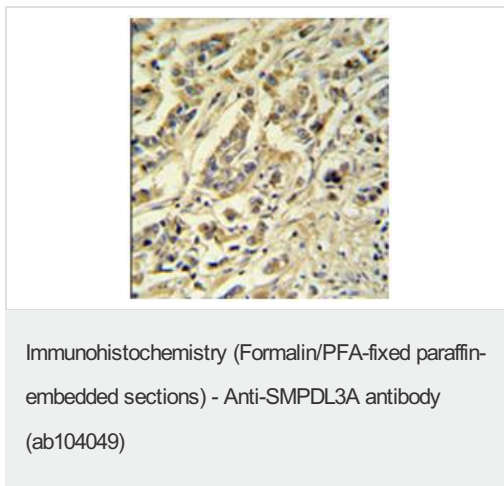
<b>Sequence similarities</b>	Belongs to the acid sphingomyelinase family.
<b>Cellular localization</b>	Secreted.

## Images



Anti-SMPDL3A antibody (ab104049) at 1/100 dilution + MDA-MB435 cell line lysates at 35 µg

**Predicted band size:** 51 kDa



Immunohistochemical analysis of SMPDL3A expression in formalin fixed and paraffin embedded breast carcinoma, using a 1/50 dilution of ab104049 followed by peroxidase conjugation of the secondary antibody and DAB staining.

**Please note:** All products are "FOR RESEARCH USE ONLY AND ARE NOT INTENDED FOR DIAGNOSTIC OR THERAPEUTIC USE"

## Our Abpromise to you: Quality guaranteed and expert technical support

- Replacement or refund for products not performing as stated on the datasheet
- Valid for 12 months from date of delivery
- Response to your inquiry within 24 hours
- We provide support in Chinese, English, French, German, Japanese and Spanish

- Extensive multi-media technical resources to help you
- We investigate all quality concerns to ensure our products perform to the highest standards

If the product does not perform as described on this datasheet, we will offer a refund or replacement. For full details of the Abpromise, please visit <https://www.abcam.com/abpromise> or contact our technical team.

### **Terms and conditions**

---

- Guarantee only valid for products bought direct from Abcam or one of our authorized distributors