

## Product datasheet

# Anti-SOX15 antibody ab82921

1 Image

### Overview

<b>Product name</b>	Anti-SOX15 antibody
<b>Description</b>	Rabbit polyclonal to SOX15
<b>Host species</b>	Rabbit
<b>Tested applications</b>	<b>Suitable for:</b> WB, ELISA
<b>Species reactivity</b>	<b>Reacts with:</b> Human <b>Predicted to work with:</b> Mouse, Rat, Rabbit, Guinea pig, Cow, Cat, Dog, Pig
<b>Immunogen</b>	Synthetic peptide corresponding to a region within C terminal amino acids 180-229 (SHCKLEAPSP CSLPQSDPRL QGELLPTYTH YLPPGSPTPY NPPLAGAPMP) of human SOX15 (NP_008873). <a href="#">Run BLAST with ExPASy</a> <a href="#">Run BLAST with NCBI</a>
<b>Positive control</b>	Transfected 293T cell lysate.

### Properties

<b>Form</b>	Liquid
<b>Storage instructions</b>	Shipped at 4°C. Upon delivery aliquot and store at -20°C. Avoid repeated freeze / thaw cycles.
<b>Storage buffer</b>	Preservative: 0.09% Sodium azide Constituents: 2% Sucrose, PBS
<b>Purity</b>	Immunogen affinity purified
<b>Purification notes</b>	ab82921 is purified by a peptide affinity chromatography method.
<b>Clonality</b>	Polyclonal
<b>Isotype</b>	IgG

### Applications

Our [Abpromise guarantee](#) covers the use of **ab82921** in the following tested applications.

The application notes include recommended starting dilutions; optimal dilutions/concentrations should be determined by the end user.

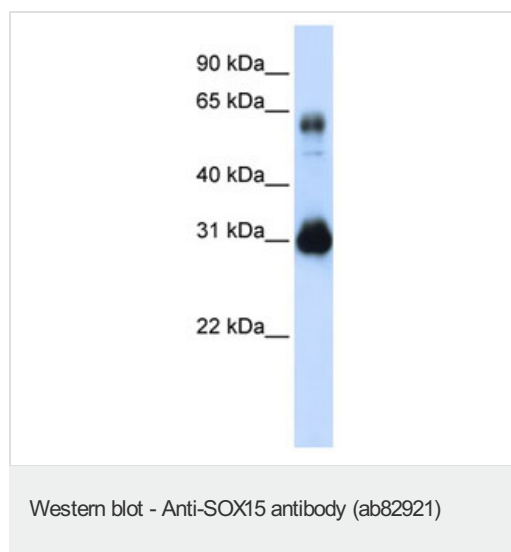
Application	Abreviews	Notes

Application	Abreviews	Notes
WB		Use a concentration of 1 µg/ml. Predicted molecular weight: 25 kDa. Good results were obtained when blocked with 5% non-fat dry milk in 0.05% PBS-T.
ELISA		Use at an assay dependent concentration. ELISA titre using peptide based assay, 1:62500.

## Target

<b>Function</b>	Binds to the 5'-AACAAAT-3' sequence.
<b>Tissue specificity</b>	Widely expressed in fetal and adult tissues examined, highest level found in fetal spinal cord and adult brain and testis.
<b>Sequence similarities</b>	Contains 1 HMG box DNA-binding domain.
<b>Cellular localization</b>	Nucleus.

## Images



Anti-SOX15 antibody (ab82921) at 1 µg/ml + Transfected 293T cell lysate at 10 µg

### Secondary

HRP conjugated anti-Rabbit IgG at 1/50000 dilution

**Predicted band size:** 25 kDa

**Observed band size:** 25 kDa

**Additional bands at:** 60 kDa. We are unsure as to the identity of these extra bands.

**Please note:** All products are "FOR RESEARCH USE ONLY AND ARE NOT INTENDED FOR DIAGNOSTIC OR THERAPEUTIC USE"

## Our Abpromise to you: Quality guaranteed and expert technical support

- Replacement or refund for products not performing as stated on the datasheet
- Valid for 12 months from date of delivery
- Response to your inquiry within 24 hours
- We provide support in Chinese, English, French, German, Japanese and Spanish
- Extensive multi-media technical resources to help you
- We investigate all quality concerns to ensure our products perform to the highest standards

If the product does not perform as described on this datasheet, we will offer a refund or replacement. For full details of the Abpromise,

please visit <https://www.abcam.com/abpromise> or contact our technical team.

## **Terms and conditions**

---

- Guarantee only valid for products bought direct from Abcam or one of our authorized distributors