

Product datasheet

Anti-SRBC antibody ab99427

★★★★★ 1 Abreviews 1 References 2 Images

Overview

Product name	Anti-SRBC antibody
Description	Goat polyclonal to SRBC
Host species	Goat
Tested applications	Suitable for: WB
Species reactivity	Reacts with: Mouse, Human Predicted to work with: Rat, Cow
Immunogen	Synthetic peptide corresponding to Human SRBC aa 178-190 (internal sequence). Sequence: C-RRTGLQKVQSLR Run BLAST with Run BLAST with
Positive control	Human Adipose and NIH3T3 cell lysates
General notes	Protein previously labeled as PRKCDBP.

Properties

Form	Liquid
Storage instructions	Shipped at 4°C. Upon delivery aliquot and store at -20°C. Avoid repeated freeze / thaw cycles.
Storage buffer	Preservative: 0.02% Sodium Azide Constituents: 0.5% BSA, Tris buffered saline, pH 7.3
Purity	Immunogen affinity purified
Purification notes	Purified from goat serum by ammonium sulphate precipitation followed by antigen affinity chromatography using the immunizing peptide.
Clonality	Polyclonal
Isotype	IgG

Applications

Our [Abpromise guarantee](#) covers the use of **ab99427** in the following tested applications.

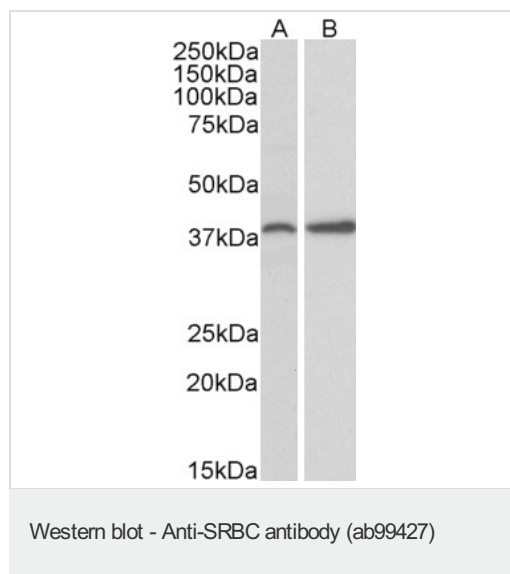
The application notes include recommended starting dilutions; optimal dilutions/concentrations should be determined by the end user.

Application	Abreviews	Notes
WB	★★★★★	Use a concentration of 0.1 - 1 µg/ml. Predicted molecular weight: 28 kDa.

Target

Function	Plays a role in the regulation of the circadian clock. Modulates the period length and phase of circadian gene expression and also regulates expression and interaction of the core clock components PER1/2 and CRY1/2. Seems to have an immune potentiation function.
Tissue specificity	Strongly expressed in mammary and epithelial cells.
Sequence similarities	Belongs to the PTRF/SDPR family.
Post-translational modifications	In vitro, phosphorylated by PRKCD.
Cellular localization	Cytoplasm.

Images



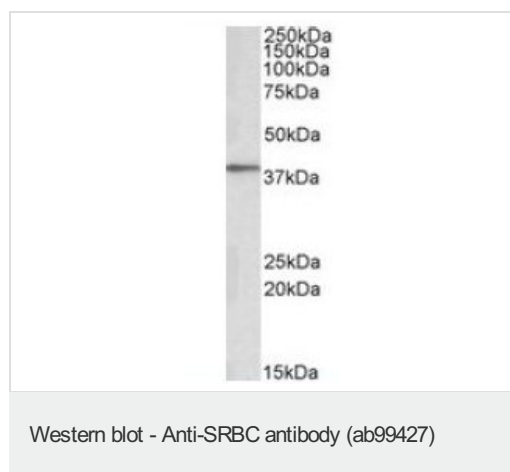
All lanes : Anti-SRBC antibody (ab99427) at 0.3 µg/ml

Lane 1 : Mouse ovary lysates

Lane 2 : Rat uterus lysates

Lysates/proteins at 35 µg per lane.

Predicted band size: 28 kDa



Anti-SRBC antibody (ab99427) at 0.1 µg/ml + Adipose cell lysate (in RIPA buffer) at 35 µg

Predicted band size: 28 kDa

Primary incubation was 1 hour.

Detected by chemiluminescence.

Our Abpromise to you: Quality guaranteed and expert technical support

- Replacement or refund for products not performing as stated on the datasheet
- Valid for 12 months from date of delivery
- Response to your inquiry within 24 hours

- We provide support in Chinese, English, French, German, Japanese and Spanish
- Extensive multi-media technical resources to help you
- We investigate all quality concerns to ensure our products perform to the highest standards

If the product does not perform as described on this datasheet, we will offer a refund or replacement. For full details of the Abpromise, please visit <https://www.abcam.com/abpromise> or contact our technical team.

Terms and conditions

- Guarantee only valid for products bought direct from Abcam or one of our authorized distributors