

Product datasheet

Anti-SSBP1 antibody ab74710

★ ★ ★ ☆ ☆ 1 Abreviews
 [2 References](#)
 [3 Images](#)

Overview

Product name	Anti-SSBP1 antibody
Description	Rabbit polyclonal to SSBP1
Host species	Rabbit
Tested applications	Suitable for: WB, IHC-P, Indirect ELISA, ICC/IF
Species reactivity	Reacts with: Human Predicted to work with: Mouse, Rat
Immunogen	A synthesized peptide derived from internal sequence of human SSBP1.
Positive control	Human pancreas tissue; extracts from HeLa cells and HUVEC cells; A549 cells.

Properties

Form	Liquid
Storage instructions	Shipped at 4°C. Upon delivery aliquot and store at -20°C. Avoid freeze / thaw cycles.
Storage buffer	Preservative: 0.02% Sodium Azide Constituents: 50% Glycerol, PBS (without Mg ²⁺ and Ca ²⁺), 150mM Sodium chloride, pH 7.4
Purity	Immunogen affinity purified
Purification notes	Affinity-purified from rabbit antiserum by affinity chromatography using epitope-specific immunogen.
Clonality	Polyclonal
Isotype	IgG

Applications

Our [Abpromise guarantee](#) covers the use of **ab74710** in the following tested applications.

The application notes include recommended starting dilutions; optimal dilutions/concentrations should be determined by the end user.

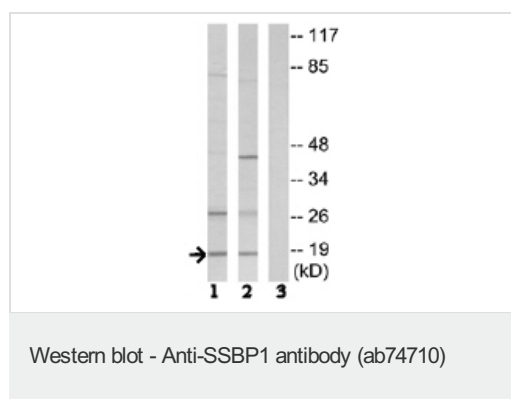
Application	Abreviews	Notes
WB	★ ★ ★ ☆ ☆	1/500 - 1/1000. Predicted molecular weight: 17 kDa.

Application	Abreviews	Notes
IHC-P		1/50 - 1/100.
Indirect ELISA		1/5000.
ICC/IF		1/500 - 1/1000.

Target

Function	This protein binds preferentially and cooperatively to ss-DNA. Probably involved in mitochondrial DNA replication.
Sequence similarities	Contains 1 SSB domain.
Post-translational modifications	Phosphorylated upon DNA damage, probably by ATM or ATR.
Cellular localization	Mitochondrion.

Images



All lanes : Anti-SSBP1 antibody (ab74710) at 1/500 dilution

Lane 1 : Extracts from HeLa cells with no peptide

Lane 2 : Extracts from HUVEC cells with no peptide

Lane 3 : Extracts from HUVEC cells with peptide at 5 µg

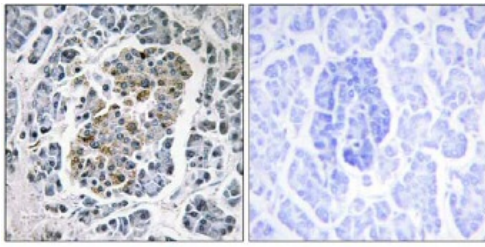
Lysates/proteins at 5 µg per lane.

Predicted band size: 17 kDa

Observed band size: 17 kDa

Additional bands at: 26 kDa, 45 kDa. We are unsure as to the identity of these extra bands.

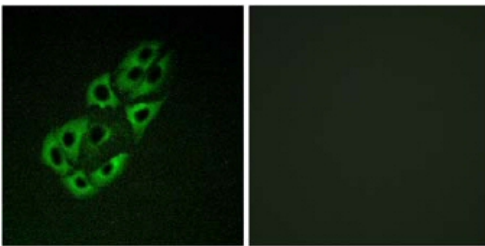
Secondary antibody - [anti-rabbit HRP \(ab6721\)](#)



Peptide - +

Immunohistochemistry (Formalin/PFA-fixed paraffin-embedded sections) - Anti-SSBP1 antibody (ab74710)

Immunohistochemical analysis of paraffin-embedded human pancreas tissue using ab74710 at a dilution of 1/50. Left-hand panel: no peptide; right-hand panel: with peptide.



Peptide - +

Immunocytochemistry/ Immunofluorescence - Anti-SSBP1 antibody (ab74710)

Immunofluorescence analysis of A549 cells, using ab74710 at a dilution of 1/500. Left-hand panel: no peptide; right-hand panel: with peptide.

Please note: All products are "FOR RESEARCH USE ONLY AND ARE NOT INTENDED FOR DIAGNOSTIC OR THERAPEUTIC USE"

Our Abpromise to you: Quality guaranteed and expert technical support

- Replacement or refund for products not performing as stated on the datasheet
- Valid for 12 months from date of delivery
- Response to your inquiry within 24 hours
- We provide support in Chinese, English, French, German, Japanese and Spanish
- Extensive multi-media technical resources to help you
- We investigate all quality concerns to ensure our products perform to the highest standards

If the product does not perform as described on this datasheet, we will offer a refund or replacement. For full details of the Abpromise, please visit <https://www.abcam.com/abpromise> or contact our technical team.

Terms and conditions

- Guarantee only valid for products bought direct from Abcam or one of our authorized distributors