

Product datasheet

Anti-STIM2 antibody ab59342

★★★★☆ 5 Abreviews 2 References 2 Images

Overview

Product name	Anti-STIM2 antibody
Description	Rabbit polyclonal to STIM2
Host species	Rabbit
Specificity	ab59342 is predicted to have no cross-reactivity to STIM1.
Tested applications	Suitable for: WB, ICC/IF, ELISA
Species reactivity	Reacts with: Mouse, Rat, Human
Immunogen	An 18 amino acid peptide from near the carboxy terminus of human STIM2.
Positive control	A20 cell lysate. IF: HeLa cell line

Properties

Form	Liquid
Storage instructions	Shipped at 4°C. Store at +4°C.
Storage buffer	Preservative: 0.02% Sodium Azide Constituents: PBS
Purity	Affinity purified
Clonality	Polyclonal
Isotype	IgG

Applications

Our [Abpromise guarantee](#) covers the use of **ab59342** in the following tested applications.

The application notes include recommended starting dilutions; optimal dilutions/concentrations should be determined by the end user.

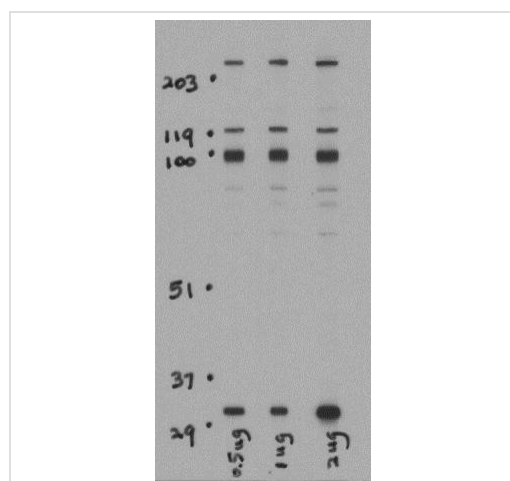
Application	Abreviews	Notes
WB	★★★★☆	Use a concentration of 0.5 - 1 µg/ml. Detects a band of approximately 95 kDa (predicted molecular weight: 84 kDa). Can be blocked with STIM2 peptide (ab176417) .
ICC/IF		Use a concentration of 1 µg/ml.

Application	Abreviews	Notes
ELISA	★★★★☆	Use at an assay dependent concentration.

Target

Function	Functions as a highly sensitive Ca(2+) sensor in the endoplasmic reticulum which activates both store-operated and store-independent Ca(2+)-influx. Regulates basal cytosolic and endoplasmic reticulum Ca(2+) concentrations. Upon mild variations of the endoplasmic reticulum Ca(2+) concentration, translocates from the endoplasmic reticulum to the plasma membrane where it probably activates the Ca(2+) release-activated Ca(2+) (CRAC) channels ORAI1, ORAI2 and ORAI3. May inhibit STIM1-mediated Ca(2+) influx.
Tissue specificity	Expressed in all tissues and tumor cell lines examined.
Sequence similarities	Contains 1 EF-hand domain. Contains 1 SAM (sterile alpha motif) domain.
Post-translational modifications	Glycosylated. Phosphorylated predominantly on Ser residues.
Cellular localization	Endoplasmic reticulum membrane. Dynamically translocates from a uniform endoplasmic reticulum distribution to punctual endoplasmic reticulum-plasma membrane junctions in response to decrease in endoplasmic reticulum Ca(2+) concentration.

Images



Western blot - Anti-STIM2 antibody (ab59342)

Lane 1 : Anti-STIM2 antibody (ab59342) at 0.5 µg/ml

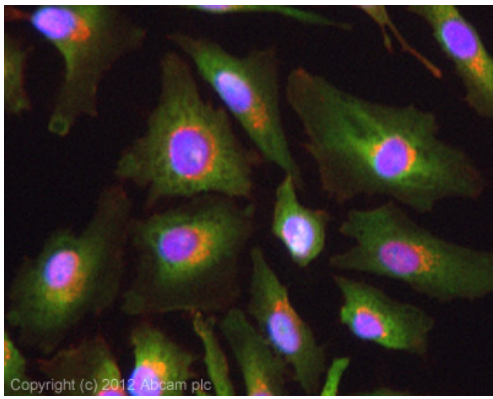
Lane 2 : Anti-STIM2 antibody (ab59342) at 1 µg/ml

Lane 3 : Anti-STIM2 antibody (ab59342) at 2 µg/ml

All lanes : A-20 cell lysate

Lysates/proteins at 15 µg per lane.

Predicted band size: 84 kDa



Immunocytochemistry/ Immunofluorescence - Anti-STIM2 antibody (ab59342)

ICC/IF image of ab59342 stained HeLa cells. The cells were 4% formaldehyde fixed (10 min) and then incubated in 1%BSA / 10% normal goat serum / 0.3M glycine in 0.1% PBS-Tween for 1h to permeabilise the cells and block non-specific protein-protein interactions. The cells were then incubated with the antibody (ab59342, 1 µg/ml) overnight at +4°C. The secondary antibody (green) was ab96899, DyLight® 488 goat anti-rabbit IgG (H+L) used at a 1/250 dilution for 1h. Alexa Fluor® 594 WGA was used to label plasma membranes (red) at a 1/200 dilution for 1h. DAPI was used to stain the cell nuclei (blue) at a concentration of 1.43µM.

Please note: All products are "FOR RESEARCH USE ONLY AND ARE NOT INTENDED FOR DIAGNOSTIC OR THERAPEUTIC USE"

Our Abpromise to you: Quality guaranteed and expert technical support

- Replacement or refund for products not performing as stated on the datasheet
- Valid for 12 months from date of delivery
- Response to your inquiry within 24 hours
- We provide support in Chinese, English, French, German, Japanese and Spanish
- Extensive multi-media technical resources to help you
- We investigate all quality concerns to ensure our products perform to the highest standards

If the product does not perform as described on this datasheet, we will offer a refund or replacement. For full details of the Abpromise, please visit <https://www.abcam.com/abpromise> or contact our technical team.

Terms and conditions

- Guarantee only valid for products bought direct from Abcam or one of our authorized distributors