


Product datasheet

Anti-Scavenging Receptor SR-BII antibody ab84601

1 Image

Overview

Product name	Anti-Scavenging Receptor SR-BII antibody
Description	Rabbit polyclonal to Scavenging Receptor SR-BII
Host species	Rabbit
Tested applications	Suitable for: WB
Species reactivity	Reacts with: Human Predicted to work with: Mouse, Rat 
Immunogen	Synthetic peptide conjugated to KLH derived from within residues 450 to the C-terminus Scavenging Receptor SR-BII. Read Abcam's proprietary immunogen policy (Peptide available as ab93792 .)
Positive control	This antibody gave a positive signal in human Kidney tissue lysate - adult normal tissue;

Properties

Form	Liquid
Storage instructions	Shipped at 4°C. Store at +4°C short term (1-2 weeks). Upon delivery aliquot. Store at -20°C or -80°C. Avoid freeze / thaw cycle.
Storage buffer	Preservative: 0.02% Sodium Azide Constituents: 1% BSA, PBS, pH 7.4
Purity	Immunogen affinity purified
Clonality	Polyclonal
Isotype	IgG

Applications

Our [Abpromise guarantee](#) covers the use of **ab84601** in the following tested applications.

The application notes include recommended starting dilutions; optimal dilutions/concentrations should be determined by the end user.

Application	Abreviews	Notes
WB		

Application notes

WB: Use at a concentration of 1 µg/ml. Detects a band of approximately 54 kDa (predicted molecular weight: 54 kDa).

Not yet tested in other applications.

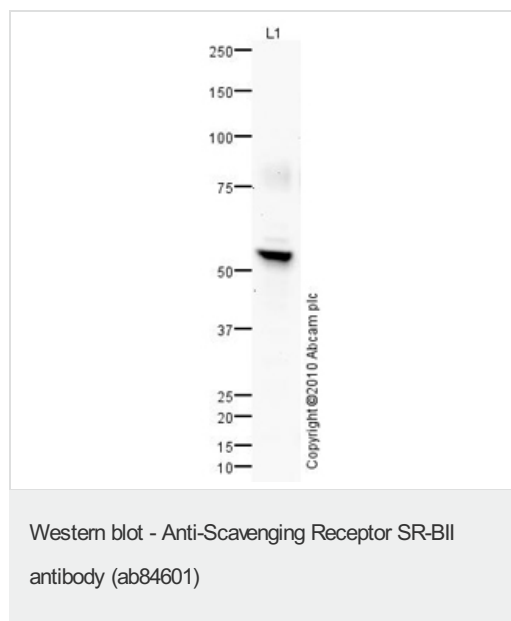
Optimal dilutions/concentrations should be determined by the end user.

Target

Cellular localization

Lysosomal membrane

Images



Anti-Scavenging Receptor SR-BII antibody (ab84601) at 1 µg/ml + Human kidney tissue lysate - total protein (ab30203) at 10 µg

Secondary

Goat polyclonal to Rabbit IgG - H&L - Pre-Adsorbed (HRP) at 1/3000 dilution

Developed using the ECL technique.

Performed under reducing conditions.

Predicted band size: 54 kDa

Observed band size: 54 kDa

Additional bands at: 80 kDa (possible glycosylated form)

Exposure time: 3 minutes

Please note: All products are "FOR RESEARCH USE ONLY AND ARE NOT INTENDED FOR DIAGNOSTIC OR THERAPEUTIC USE"

Our Abpromise to you: Quality guaranteed and expert technical support

- Replacement or refund for products not performing as stated on the datasheet
- Valid for 12 months from date of delivery
- Response to your inquiry within 24 hours
- We provide support in Chinese, English, French, German, Japanese and Spanish
- Extensive multi-media technical resources to help you
- We investigate all quality concerns to ensure our products perform to the highest standards

If the product does not perform as described on this datasheet, we will offer a refund or replacement. For full details of the Abpromise, please visit <https://www.abcam.com/abpromise> or contact our technical team.

Terms and conditions

- Guarantee only valid for products bought direct from Abcam or one of our authorized distributors