

## Product datasheet

# Anti-Serum Amyloid A antibody [115] ab687

★★★★☆ 6 Abreviews 5 References 2 Images

### Overview

---

<b>Product name</b>	Anti-Serum Amyloid A antibody [115]
<b>Description</b>	Mouse monoclonal [115] to Serum Amyloid A
<b>Host species</b>	Mouse
<b>Tested applications</b>	<b>Suitable for:</b> WB, Sandwich ELISA
<b>Species reactivity</b>	<b>Reacts with:</b> Human
<b>Immunogen</b>	Highly purified recombinant human serum amyloid A (MW: 12 kDa).
<b>General notes</b>	This product was changed from ascites to tissue culture supernatant on 6th March 2018. Please note that the dilutions may need to be adjusted accordingly. If you have any questions, please do not hesitate to contact our scientific support team.

### Properties

---

<b>Form</b>	Liquid
<b>Storage instructions</b>	Shipped at 4°C. Upon delivery aliquot and store at -20°C or -80°C. Avoid repeated freeze / thaw cycles.
<b>Storage buffer</b>	Preservative: None Constituents: PBS
<b>Purification notes</b>	Affinity purified from tissue culture supernatant.
<b>Clonality</b>	Monoclonal
<b>Clone number</b>	115
<b>Myeloma</b>	unknown
<b>Isotype</b>	IgG1
<b>Light chain type</b>	kappa

### Applications

---

Our [Abpromise guarantee](#) covers the use of **ab687** in the following tested applications.

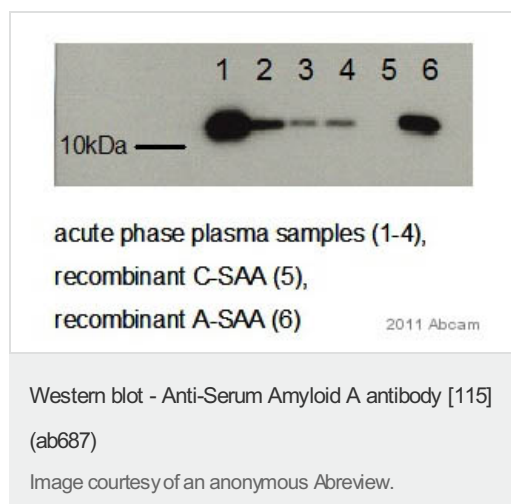
The application notes include recommended starting dilutions; optimal dilutions/concentrations should be determined by the end user.

Application	Abreviews	Notes
WB	★★★★☆	Use at an assay dependent concentration. Use at an assay dependent dilution. This antibody, at a concentration of 0.1-0.5 µg/ml, will allow visualisation of 100 ng/lane of recombinant human SAA.
Sandwich ELISA		Use at an assay dependent concentration. <a href="#">sELISA compatible pair</a>

## Target

<b>Function</b>	Major acute phase reactant. Apolipoprotein of the HDL complex.
<b>Tissue specificity</b>	Expressed by the liver; secreted in plasma.
<b>Involvement in disease</b>	Note=Reactive, secondary amyloidosis is characterized by the extracellular accumulation in various tissues of the SAA protein. These deposits are highly insoluble and resistant to proteolysis; they disrupt tissue structure and compromise function. Note=Elevated serum SSA protein levels may be associated with lung cancer.
<b>Sequence similarities</b>	Belongs to the SAA family.
<b>Post-translational modifications</b>	This protein is the precursor of amyloid protein A, which is formed by the removal of approximately 24 residues from the C-terminal end.
<b>Cellular localization</b>	Secreted.

## Images



**All lanes** : Anti-Serum Amyloid A antibody [115] (ab687) at 1/4000 dilution

**Lanes 1-4** : Acute phase plasma samples

**Lane 5** : Recombinant C-SAA

**Lane 6** : Recombinant A-SAA

Lysates/proteins at 14 µg per lane.

### Secondary

**All lanes** : Goat anti-mouse IgG-HRP at 1/10000 dilution

Developed using the ECL technique.

**Exposure time:** 5 seconds



Western blot - Anti-Serum Amyloid A antibody [115]  
(ab687)

**Please note:** All products are "FOR RESEARCH USE ONLY AND ARE NOT INTENDED FOR DIAGNOSTIC OR THERAPEUTIC USE"

### Our Abpromise to you: Quality guaranteed and expert technical support

- Replacement or refund for products not performing as stated on the datasheet
- Valid for 12 months from date of delivery
- Response to your inquiry within 24 hours
- We provide support in Chinese, English, French, German, Japanese and Spanish
- Extensive multi-media technical resources to help you
- We investigate all quality concerns to ensure our products perform to the highest standards

If the product does not perform as described on this datasheet, we will offer a refund or replacement. For full details of the Abpromise, please visit <https://www.abcam.com/abpromise> or contact our technical team.

### Terms and conditions

- Guarantee only valid for products bought direct from Abcam or one of our authorized distributors