


Product datasheet

# Anti-Serum Response Factor SRF antibody ab101246

1 Image

Overview

---

<b>Product name</b>	Anti-Serum Response Factor SRF antibody
<b>Description</b>	Rabbit polyclonal to Serum Response Factor SRF
<b>Host species</b>	Rabbit
<b>Tested applications</b>	<b>Suitable for:</b> WB
<b>Species reactivity</b>	<b>Reacts with:</b> Human <b>Predicted to work with:</b> Horse, Chicken, Cow, Dog, Pig 
<b>Immunogen</b>	Synthetic peptide conjugated to KLH derived from within residues 200 - 300 of Human Serum Response Factor SRF. Read Abcam's proprietary immunogen policy
<b>Positive control</b>	This antibody gave a positive signal in the following whole cell lysates: HeLa; HeLa Nuclear; Jurkat; HEK293; MCF7; NIH3T3; F9.

Properties

---

<b>Form</b>	Liquid
<b>Storage instructions</b>	Shipped at 4°C. Store at +4°C short term (1-2 weeks). Upon delivery aliquot. Store at -20°C or -80°C. Avoid freeze / thaw cycle.
<b>Storage buffer</b>	pH: 7.40 Preservative: 0.02% Sodium azide Constituent: PBS Note: Batches of this product that have a concentration < 1mg/ml may have BSA added as a stabilising agent. If you would like information about the formulation of a specific lot, please contact our scientific support team who will be happy to help.
<b>Purity</b>	Immunogen affinity purified
<b>Clonality</b>	Polyclonal
<b>Isotype</b>	IgG

Applications

---

Our [Abpromise guarantee](#) covers the use of **ab101246** in the following tested applications.

The application notes include recommended starting dilutions; optimal dilutions/concentrations should be determined by the end user.

Application	Abreviews	Notes
WB		Use a concentration of 1 µg/ml. Detects a band of approximately 51 kDa (predicted molecular weight: 51 kDa).

---

## Target

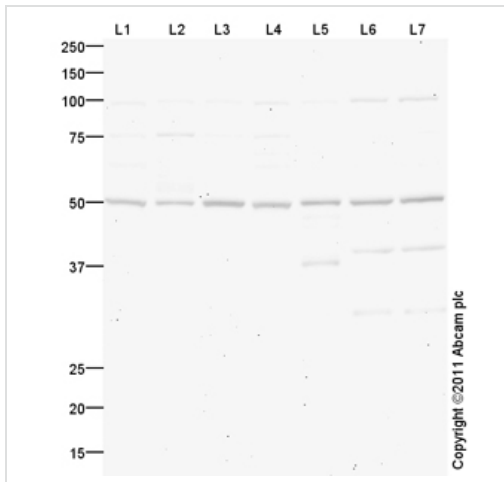
---

<b>Function</b>	SRF is a transcription factor that binds to the serum response element (SRE), a short sequence of dyad symmetry located 300 bp to the 5' of the site of transcription initiation of some genes (such as FOS). Required for cardiac differentiation and maturation.
<b>Sequence similarities</b>	Contains 1 MADS-box domain.
<b>Post-translational modifications</b>	Phosphorylated by PRKDC.
<b>Cellular localization</b>	Nucleus.

---

## Images

---



Western blot - Anti-Serum Response Factor SRF antibody (ab101246)

**All lanes :** Anti-Serum Response Factor SRF antibody (ab101246) at 1  $\mu$ g

**Lane 1 :** HeLa (Human epithelial carcinoma cell line) Whole Cell Lysate

**Lane 2 :** HeLa (Human epithelial carcinoma cell line) Nuclear Lysate

**Lane 3 :** Jurkat (Human T cell lymphoblast-like cell line) Whole Cell Lysate

**Lane 4 :** HEK293 (Human embryonic kidney cell line) Whole Cell Lysate

**Lane 5 :** MCF7 (Human breast adenocarcinoma cell line) Whole Cell Lysate

**Lane 6 :** NIH 3T3 (Mouse embryonic fibroblast cell line) Whole Cell Lysate

**Lane 7 :** F9 (Mouse embryonic carcinoma cell line) Whole Cell Lysate

Lysates/proteins at 20  $\mu$ g per lane.

### Secondary

**All lanes :** Goat Anti-Rabbit IgG H&L (HRP) preadsorbed ([ab97080](#)) at 1/5000 dilution

Developed using the ECL technique.

Performed under reducing conditions.

**Predicted band size:** 51 kDa

**Observed band size:** 51 kDa

**Additional bands at:** 100 kDa, 40 kDa. We are unsure as to the identity of these extra bands.

**Exposure time:** 20 minutes

Abcam recommends using milk as the blocking agent. Abcam welcomes customer feedback and would appreciate any comments regarding this product and the data presented above.

### **Our Abpromise to you: Quality guaranteed and expert technical support**

---

- Replacement or refund for products not performing as stated on the datasheet
- Valid for 12 months from date of delivery
- Response to your inquiry within 24 hours
  
- We provide support in Chinese, English, French, German, Japanese and Spanish
- Extensive multi-media technical resources to help you
- We investigate all quality concerns to ensure our products perform to the highest standards

If the product does not perform as described on this datasheet, we will offer a refund or replacement. For full details of the Abpromise, please visit <https://www.abcam.com/abpromise> or contact our technical team.

### **Terms and conditions**

---

- Guarantee only valid for products bought direct from Abcam or one of our authorized distributors