



Product datasheet

# Anti-Sodium/Hydrogen Exchanger 3 / NHE-3 antibody ab95299

[1 Abreviews](#) [2 References](#) [1 Image](#)

Overview

---

<b>Product name</b>	Anti-Sodium/Hydrogen Exchanger 3 / NHE-3 antibody
<b>Description</b>	Rabbit polyclonal to Sodium/Hydrogen Exchanger 3 / NHE-3
<b>Host species</b>	Rabbit
<b>Tested applications</b>	<b>Suitable for:</b> WB
<b>Species reactivity</b>	<b>Reacts with:</b> Mouse, Rat
<b>Immunogen</b>	Synthetic peptide corresponding to Rat Sodium/Hydrogen Exchanger 3/ NHE-3 aa 809-831 (C terminal). Sequence: DSFLQADGP EEQLQPASPESTM  Database link: <a href="#">NP_036786</a>   <a href="#">Run BLAST with</a>  <a href="#">Run BLAST with</a>
<b>Positive control</b>	Rat kidney tissue lysate.
<b>General notes</b>	Previously labelled as Sodium / Hydrogen Exchanger 3.

Properties

---

<b>Form</b>	Liquid
<b>Storage instructions</b>	Shipped at 4°C. Store at -20°C. Stable for 12 months at -20°C.
<b>Storage buffer</b>	Constituent: 50% Glycerol
<b>Purity</b>	Immunogen affinity purified
<b>Clonality</b>	Polyclonal
<b>Isotype</b>	IgG

Applications

---

Our [Abpromise guarantee](#) covers the use of **ab95299** in the following tested applications.

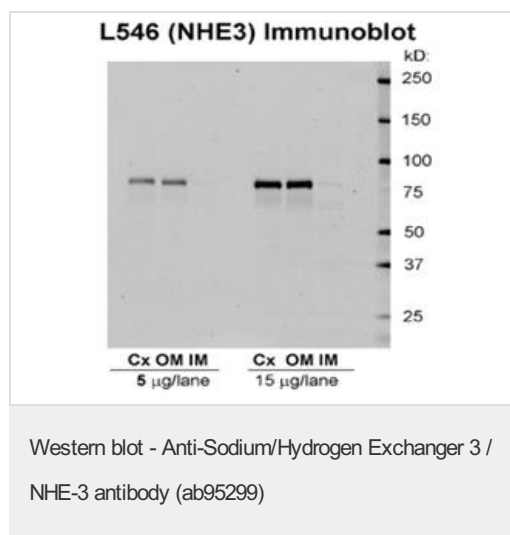
The application notes include recommended starting dilutions; optimal dilutions/concentrations should be determined by the end user.

Application	Abreviews	Notes
WB		1/1000. Detects a band of approximately 84 kDa (predicted molecular weight: 93 kDa).

## Target

<b>Function</b>	Involved in pH regulation to eliminate acids generated by active metabolism or to counter adverse environmental conditions. Major proton extruding system driven by the inward sodium ion chemical gradient. Plays an important role in signal transduction.
<b>Sequence similarities</b>	Belongs to the monovalent cation:proton antiporter 1 (CPA1) transporter (TC 2.A.36) family.
<b>Post-translational modifications</b>	Phosphorylated by PKA, which inhibits activity.
<b>Cellular localization</b>	Membrane. In intestinal epithelial cells, localizes to the ileal brush border.

## Images



Western blot detection of Sodium/Hydrogen Exchanger 3 / NHE-3 in Rat kidney tissues using ab95299 at 1:1000 dilution.

**Please note:** All products are "FOR RESEARCH USE ONLY AND ARE NOT INTENDED FOR DIAGNOSTIC OR THERAPEUTIC USE"

## Our Abpromise to you: Quality guaranteed and expert technical support

- Replacement or refund for products not performing as stated on the datasheet
- Valid for 12 months from date of delivery
- Response to your inquiry within 24 hours
- We provide support in Chinese, English, French, German, Japanese and Spanish
- Extensive multi-media technical resources to help you
- We investigate all quality concerns to ensure our products perform to the highest standards

If the product does not perform as described on this datasheet, we will offer a refund or replacement. For full details of the Abpromise, please visit <https://www.abcam.com/abpromise> or contact our technical team.

## Terms and conditions

---

- Guarantee only valid for products bought direct from Abcam or one of our authorized distributors