

Product datasheet

Anti-Staphylococcus aureus antibody ab20920

★★★★★ 7 Abreviews 11 References 2 Images

Overview

Product name	Anti-Staphylococcus aureus antibody
Description	Rabbit polyclonal to Staphylococcus aureus
Host species	Rabbit
Specificity	Soluble and structural antigens of the whole bacterium. Antiserum is not absorbed for related microorganisms.
Tested applications	Suitable for: ICC/IF, IHC-Fr
Species reactivity	Reacts with: Staphylococcus aureus
Immunogen	<i>Staphylococcus aureus</i> strain ATCC 27660 (mixture of intact organisms and lysed cells).

Properties

Form	Liquid
Storage instructions	Shipped at 4°C. Store at +4°C short term (1-2 weeks). Upon delivery aliquot. Store at -20°C or -80°C. Avoid freeze / thaw cycle.
Storage buffer	Preservative: 0.1% Sodium Azide Constituents: 0.01M PBS, pH 7.2
Purity	Protein A purified
Clonality	Polyclonal
Isotype	IgG

Applications

Our [Abpromise guarantee](#) covers the use of **ab20920** in the following tested applications.

The application notes include recommended starting dilutions; optimal dilutions/concentrations should be determined by the end user.

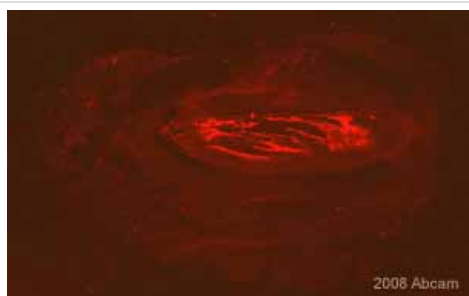
Application	Abreviews	Notes
ICC/IF	★★★★★	Use at an assay dependent concentration.
IHC-Fr	★★★★★	Use at an assay dependent concentration. Use with acetone fixed tissues.

Target

Relevance

Staphylococcus aureus are gram-positive bacteria that, although part of the normal flora of humans (nasal passages, skin and mucous membranes), have the potential to become opportunistic pathogens. S. aureus is a frequent cause of a wide range of infections and some bacterial strains have become resistant to many commonly used antibiotics.

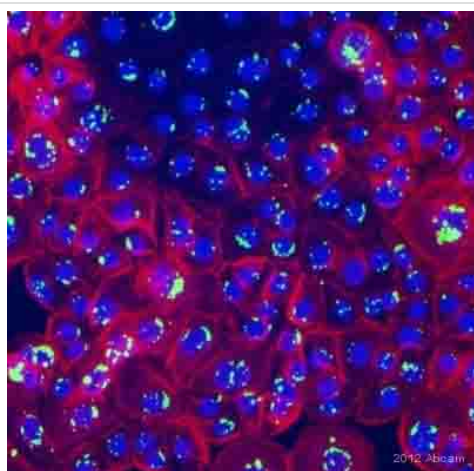
Images



Immunohistochemistry (Frozen sections) - Anti-Staphylococcus aureus antibody (ab20920)

This image is courtesy of an Abreview submitted by Dr Dagmar Salber

ab20920 staining an abscess in rat calf tissue prepared as a 20 µm cryoslice. Tissue was fixed in paraformaldehyde, permeabilised with 0,5% Triton X100 in PBS, and blocked with 10% serum plus 1% BSA for 1 hour at room temperature. The primary antibody was diluted 1/500 with PBS plus 3-5% Serum, 0,5% Triton X100 and incubated for 24 hours at 20°C. An Alexa Fluor® 568 goat anti-rabbit was used as the secondary



Immunocytochemistry/ Immunofluorescence - Anti-Staphylococcus aureus antibody (ab20920)

Image courtesy of an anonymous Abreview.

ab20920 staining Staphylococcus aureus in human keratinocytes by Immunocytochemistry/ Immunofluorescence.

Cells were fixed in methanol, permeabilized using 0.1% saponin/ PBS, blocked with 4% BSA for 30 minutes at 25°C and then incubated with ab20920 at 10µg/ml for 14 hours at 4°C. The secondary used was an Alexa-Fluor 488 conjugated goat anti-rabbit polyclonal used at a 1/100 dilution.

Red: cadherin

Blue: DAPI

Green: anti-Staphylococcus aureus (ab20920)

Please note: All products are "FOR RESEARCH USE ONLY AND ARE NOT INTENDED FOR DIAGNOSTIC OR THERAPEUTIC USE"

Our Abpromise to you: Quality guaranteed and expert technical support

- Replacement or refund for products not performing as stated on the datasheet
- Valid for 12 months from date of delivery
- Response to your inquiry within 24 hours

- We provide support in Chinese, English, French, German, Japanese and Spanish
- Extensive multi-media technical resources to help you
- We investigate all quality concerns to ensure our products perform to the highest standards

If the product does not perform as described on this datasheet, we will offer a refund or replacement. For full details of the Abpromise, please visit <https://www.abcam.com/abpromise> or contact our technical team.

Terms and conditions

- Guarantee only valid for products bought direct from Abcam or one of our authorized distributors