

Product datasheet

Anti-Stathmin 1 antibody, prediluted ab80926

1 Image

Overview

Product name	Anti-Stathmin 1 antibody, prediluted
Description	Rabbit polyclonal to Stathmin 1, prediluted
Host species	Rabbit
Tested applications	Suitable for: IHC-P
Species reactivity	Reacts with: Human
Immunogen	Synthetic peptide within Human Stathmin 1 aa 100 to the C-terminus (internal sequence). The exact sequence is proprietary. Database link: P16949
Positive control	Human breast carcinoma or tonsil tissue; Jurkat cells.

Properties

Form	Prediluted
Storage instructions	Shipped at 4°C. Store at +4°C.
Storage buffer	Preservative: 0.1% Sodium Azide Constituents: 1% BSA, 50mM Tris, pH 7.6
Purity	Protein A purified
Clonality	Polyclonal
Isotype	IgG

Applications

Our [Abpromise guarantee](#) covers the use of **ab80926** in the following tested applications.

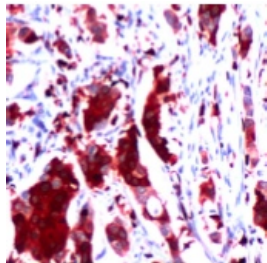
The application notes include recommended starting dilutions; optimal dilutions/concentrations should be determined by the end user.

Application	Abreviews	Notes
IHC-P		Use at an assay dependent concentration. Use neat for 30 min at RT. Perform heat mediated antigen retrieval before commencing with IHC staining protocol, by boiling tissue sections in 10mM Citrate buffer, pH 6.0 for 10 min followed by cooling at RT for 20 min.

Target

Function	Involved in the regulation of the microtubule (MT) filament system by destabilizing microtubules. Prevents assembly and promotes disassembly of microtubules. Phosphorylation at Ser-16 may be required for axon formation during neurogenesis. Involved in the control of the learned and innate fear.
Tissue specificity	Ubiquitous. Expression is strongest in fetal and adult brain, spinal cord, and cerebellum, followed by thymus, bone marrow, testis, and fetal liver. Expression is intermediate in colon, ovary, placenta, uterus, and trachea, and is readily detected at substantially lower levels in all other tissues examined. Lowest expression is found in adult liver. Present in much greater abundance in cells from patients with acute leukemia of different subtypes than in normal peripheral blood lymphocytes, non-leukemic proliferating lymphoid cells, bone marrow cells, or cells from patients with chronic lymphoid or myeloid leukemia.
Sequence similarities	Belongs to the stathmin family. Contains 1 SLD (stathmin-like) domain.
Post-translational modifications	Many different phosphorylated forms are observed depending on specific combinations among the sites which can be phosphorylated. MAPK is responsible for the phosphorylation of stathmin in response to NGF. Phosphorylation at Ser-16 seems to be required for neuron polarization (By similarity). Phosphorylation at Ser-63 reduces tubulin binding 10-fold and suppresses the MT polymerization inhibition activity.
Cellular localization	Cytoplasm > cytoskeleton.

Images



Immunohistochemistry analysis of formalin-fixed, paraffin-embedded Human breast carcinoma sections, using pre-diluted ab80926.

Immunohistochemistry (Formalin/PFA-fixed paraffin-embedded sections) - Anti-Stathmin 1 antibody, prediluted (ab80926)

Please note: All products are "FOR RESEARCH USE ONLY AND ARE NOT INTENDED FOR DIAGNOSTIC OR THERAPEUTIC USE"

Our Abpromise to you: Quality guaranteed and expert technical support

- Replacement or refund for products not performing as stated on the datasheet
- Valid for 12 months from date of delivery
- Response to your inquiry within 24 hours
- We provide support in Chinese, English, French, German, Japanese and Spanish
- Extensive multi-media technical resources to help you

- We investigate all quality concerns to ensure our products perform to the highest standards

If the product does not perform as described on this datasheet, we will offer a refund or replacement. For full details of the Abpromise, please visit <https://www.abcam.com/abpromise> or contact our technical team.

Terms and conditions

- Guarantee only valid for products bought direct from Abcam or one of our authorized distributors