


Product datasheet

Anti-Synaptophysin antibody ab32594

★★★★★ 7 Abreviews 8 References 9 Images

Overview

Product name	Anti-Synaptophysin antibody
Description	Rabbit polyclonal to Synaptophysin
Host species	Rabbit
Tested applications	Suitable for: WB, IHC-FoFr, ICC/IF
Species reactivity	Reacts with: Mouse, Rat, Sheep, Cow, Zebrafish, Apteronotus leptorhynchus Predicted to work with: Human 
Immunogen	Synthetic peptide: GPGGYGPQDSYGPQGGYQPD , corresponding to amino acids 253-272 of Rat Synaptophysin Run BLAST with Run BLAST with
Positive control	Rat, mouse and bovine brain tissue and sheep retinas.

Properties

Form	Liquid
Storage instructions	Shipped at 4°C. Upon delivery aliquot and store at -20°C or -80°C. Avoid repeated freeze / thaw cycles.
Storage buffer	Preservative: 0.05% Sodium Azide Constituents: PBS, 1mg/ml BSA
Purity	Immunogen affinity purified
Clonality	Polyclonal
Isotype	IgG

Applications

Our [Abpromise guarantee](#) covers the use of **ab32594** in the following tested applications.

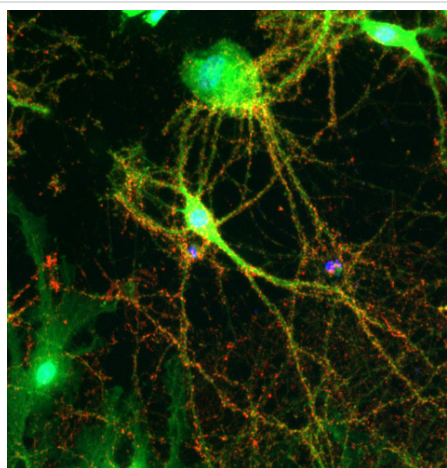
The application notes include recommended starting dilutions; optimal dilutions/concentrations should be determined by the end user.

Application	Abreviews	Notes
WB	★★★★★	1/5000. Detects a band of approximately 33.8 kDa (predicted molecular weight: 34 kDa).
IHC-FoFr	★★★★★	Use at an assay dependent concentration.
ICC/IF	★★★★☆	Use at an assay dependent concentration.

Target

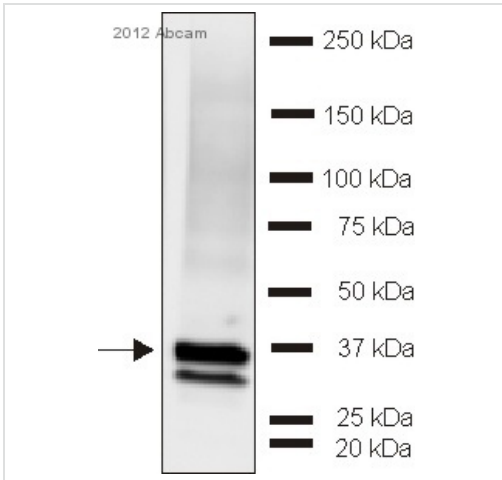
Function	Possibly involved in structural functions as organizing other membrane components or in targeting the vesicles to the plasma membrane. Involved in the regulation of short-term and long-term synaptic plasticity.
Tissue specificity	Characteristic of a type of small (30-80 nm) neurosecretory vesicles, including presynaptic vesicles, but also vesicles of various neuroendocrine cells of both neuronal and epithelial phenotype.
Involvement in disease	Mental retardation, X-linked, SYP-related
Sequence similarities	Belongs to the synaptophysin/synaptobrevin family. Contains 1 MARVEL domain.
Domain	The calcium-binding activity is thought to be localized in the cytoplasmic tail of the protein.
Post-translational modifications	Ubiquitinated; mediated by SIAH1 or SIAH2 and leading to its subsequent proteasomal degradation.
Cellular localization	Cytoplasmic vesicle, secretory vesicle, synaptic vesicle membrane. Cell junction, synapse, synaptosome.

Images



ab32594 labelling Synaptophysin by Immunocytochemistry/Immunofluorescence.

Immunocytochemistry/ Immunofluorescence - Anti-Synaptophysin antibody (ab32594)



Western blot - Anti-Synaptophysin antibody (ab32594)

This image is courtesy of an anonymous Abreview

Anti-Synaptophysin antibody (ab32594) at 1/1000 dilution + *Apteronotus leptorhynchus* brain tissue lysate at 50 μ g

Secondary

AlexaFluor®488-conjugated goat anti-rabbit polyclonal IgG at 1/1000 dilution

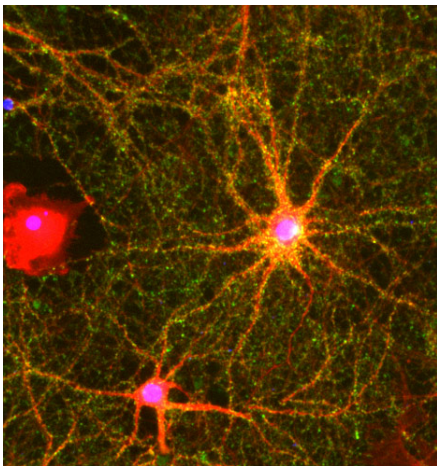
Developed using the ECL technique.

Performed under reducing conditions.

Predicted band size: 34 kDa

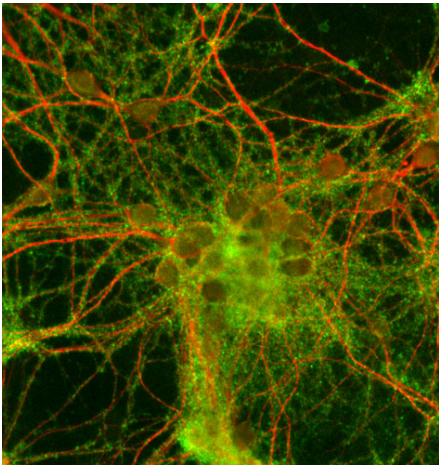
Observed band size: 33,35 kDa

Exposure time: 7 minutes



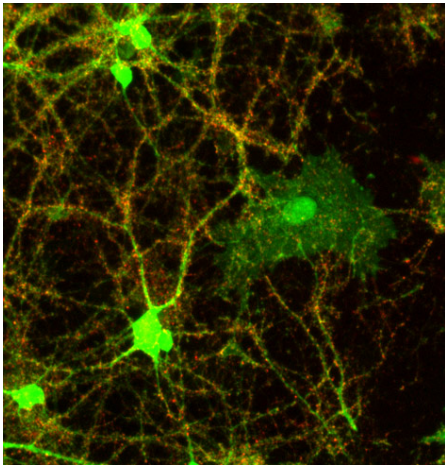
Immunocytochemistry/ Immunofluorescence - Anti-Synaptophysin antibody (ab32594)

ab32594 labelling Synaptophysin by Immunocytochemistry/Immunofluorescence.



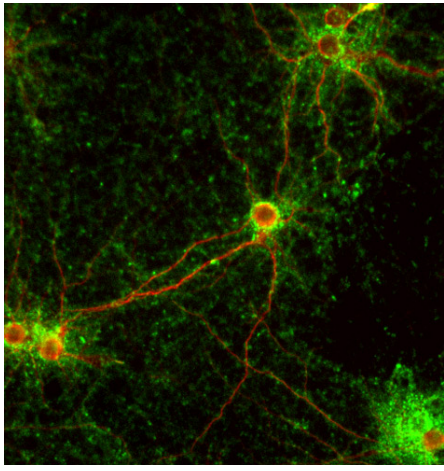
ab32594 labelling Synaptophysin by
Immunocytochemistry/Immunofluorescence.

Immunocytochemistry/ Immunofluorescence - Anti-
Synaptophysin antibody (ab32594)



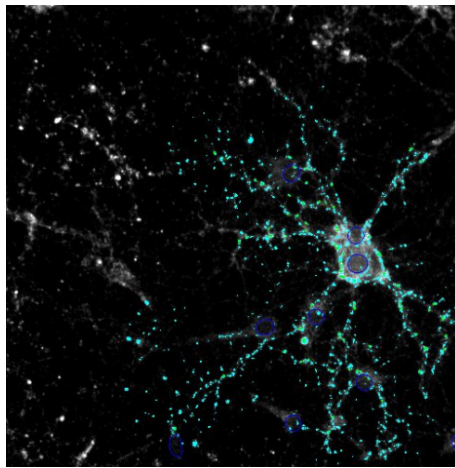
ab32594 labelling Synaptophysin by
Immunocytochemistry/Immunofluorescence.

Immunocytochemistry/ Immunofluorescence - Anti-
Synaptophysin antibody (ab32594)



ab32594 labelling Synaptophysin by Immunocytochemistry/Immunofluorescence.

Immunocytochemistry/ Immunofluorescence - Anti-Synaptophysin antibody (ab32594)



ab32594 labelling Synaptophysin by Immunocytochemistry/Immunofluorescence.

Immunocytochemistry/ Immunofluorescence - Anti-Synaptophysin antibody (ab32594)

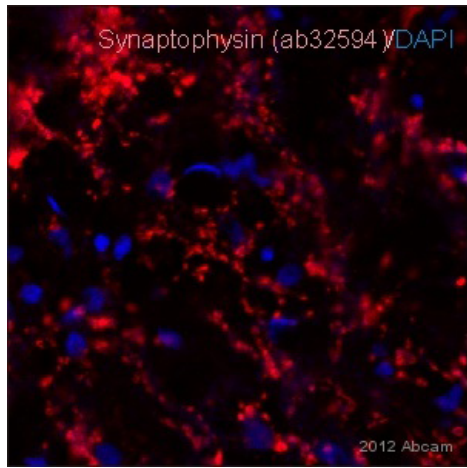


Anti-Synaptophysin antibody (ab32594) at 1/5000 dilution + Rat brain

Predicted band size: 34 kDa

Observed band size: 33.8 kDa

Western blot - Anti-Synaptophysin antibody (ab32594)



Immunohistochemistry (PFA perfusion fixed frozen sections) - Anti-Synaptophysin antibody (ab32594)

This image is courtesy of an anonymous Abreview

Immunohistochemical analysis of *Aptereronotus leptorhynchus* brain tissue, staining Synaptophysin with ab32594.

Tissue was fixed with paraformaldehyde, permeabilized with 0.3% Triton X-100 and blocked with 3% sheep serum, 1% BSA and 1% teleostean gelatine in TBS for 1 hour at 24°. Samples were incubated with primary antibody (1/100 in blocking solution) for 18 hours at 4°C. An AlexaFluor®546-conjugated goat anti-rabbit polyclonal IgG (1/200) was used as the secondary antibody.

Please note: All products are "FOR RESEARCH USE ONLY AND ARE NOT INTENDED FOR DIAGNOSTIC OR THERAPEUTIC USE"

Our Abpromise to you: Quality guaranteed and expert technical support

- Replacement or refund for products not performing as stated on the datasheet
- Valid for 12 months from date of delivery
- Response to your inquiry within 24 hours
- We provide support in Chinese, English, French, German, Japanese and Spanish
- Extensive multi-media technical resources to help you
- We investigate all quality concerns to ensure our products perform to the highest standards

If the product does not perform as described on this datasheet, we will offer a refund or replacement. For full details of the Abpromise, please visit <https://www.abcam.com/abpromise> or contact our technical team.

Terms and conditions

- Guarantee only valid for products bought direct from Abcam or one of our authorized distributors