




Product datasheet

Anti-TGIF2LX antibody ab80423

1 Image

Overview

Product name	Anti-TGIF2LX antibody
Description	Rabbit polyclonal to TGIF2LX
Host species	Rabbit
Tested applications	Suitable for: WB, ELISA
Species reactivity	Reacts with: Human Predicted to work with: Chimpanzee, Gorilla 
Immunogen	Synthetic peptide within Human TGIF2LX aa 146-195 (internal sequence). The exact sequence is proprietary. Sequence: SGPSGPDNVQSLPLWPLPKGQMSREKQDPESAPSQKLTGIAQPKKKVKV Database link: Q8IUE1  Run BLAST with  Run BLAST with
Positive control	HeLa cell lysate.

Properties

Form	Liquid
Storage instructions	Shipped at 4°C. Upon delivery aliquot and store at -20°C. Avoid repeated freeze / thaw cycles.
Storage buffer	Preservative: 0.09% Sodium azide Constituents: 2% Sucrose, PBS
Purity	Immunogen affinity purified
Clonality	Polyclonal
Isotype	IgG

Applications

Our [Abpromise guarantee](#) covers the use of **ab80423** in the following tested applications.

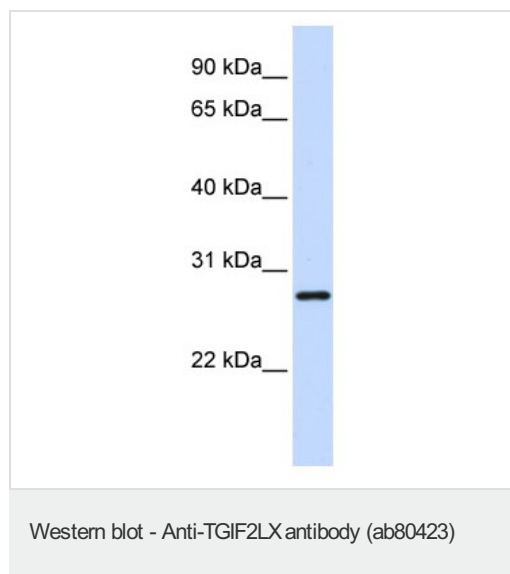
The application notes include recommended starting dilutions; optimal dilutions/concentrations should be determined by the end user.

Application	Abreviews	Notes
WB		Use a concentration of 1 µg/ml. Detects a band of approximately 27 kDa (predicted molecular weight: 27 kDa). Good results were obtained when blocked with 5% non-fat dry milk in 0.05% PBS-T.
ELISA		Use at an assay dependent concentration. ELISA titre using peptide based assay: 1/62500.

Target

Function	May have a transcription role in testis.
Tissue specificity	Specifically expressed in adult testis.
Sequence similarities	Belongs to the TALE/TGIF homeobox family. Contains 1 homeobox DNA-binding domain.
Cellular localization	Nucleus.

Images



Anti-TGIF2LX antibody (ab80423) at 1 µg/ml +
HeLa cell lysate at 10 µg

Secondary

HRP conjugated anti-Rabbit IgG at 1/50000
dilution

Predicted band size: 27 kDa

Observed band size: 27 kDa

Gel concentration: 12%

Please note: All products are "FOR RESEARCH USE ONLY AND ARE NOT INTENDED FOR DIAGNOSTIC OR THERAPEUTIC USE"

Our Abpromise to you: Quality guaranteed and expert technical support

- Replacement or refund for products not performing as stated on the datasheet
- Valid for 12 months from date of delivery
- Response to your inquiry within 24 hours
- We provide support in Chinese, English, French, German, Japanese and Spanish
- Extensive multi-media technical resources to help you
- We investigate all quality concerns to ensure our products perform to the highest standards

If the product does not perform as described on this datasheet, we will offer a refund or replacement. For full details of the Abpromise, please visit <https://www.abcam.com/abpromise> or contact our technical team.

Terms and conditions

- Guarantee only valid for products bought direct from Abcam or one of our authorized distributors