


Product datasheet

Anti-TIPRL antibody ab70795

1 References 3 Images

Overview

Product name	Anti-TIPRL antibody
Description	Rabbit polyclonal to TIPRL
Host species	Rabbit
Tested applications	Suitable for: IHC-P, WB, IP
Species reactivity	Reacts with: Mouse, Human Predicted to work with: Chimpanzee, Rhesus monkey, Orangutan 
Immunogen	Synthetic peptide corresponding to a region between residue 225 and the C-terminus (residue 272) of human TIPRL (NP_690866.1)
Positive control	HeLa, 293T and NIH3T3 whole cell lysates.

Properties

Form	Liquid
Storage instructions	Shipped at 4°C. Upon delivery aliquot and store at -20°C. Avoid freeze / thaw cycles.
Storage buffer	Preservative: 0.09% Sodium Azide Constituents: 0.1% BSA, Tris buffered saline
Purity	Immunogen affinity purified
Purification notes	ab70795 was affinity purified using an epitope specific to TIPRL immobilized on solid support.
Clonality	Polyclonal
Isotype	IgG

Applications

Our [Abpromise guarantee](#) covers the use of **ab70795** in the following tested applications.

The application notes include recommended starting dilutions; optimal dilutions/concentrations should be determined by the end user.

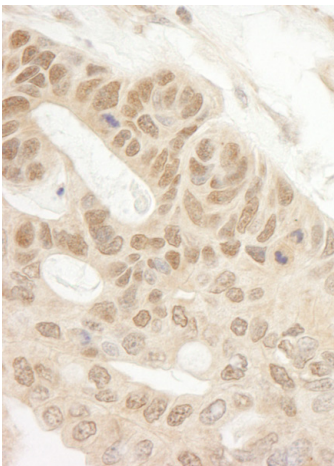
Application	Abreviews	Notes
IHC-P		1/100 - 1/500. Perform heat mediated antigen retrieval with Tris/EDTA buffer pH 9.0 before commencing with IHC staining protocol.

Application	Abreviews	Notes
WB		1/2000 - 1/10000. Detects a band of approximately 32 kDa (predicted molecular weight: 32 kDa).
IP		Use at 2-5 µg/mg of lysate.

Target

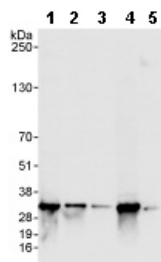
Function	May be a allosteric regulator of serine/threonine-protein phosphatase 2A (PP2A). Isoform 1 inhibits catalytic activity of the PP2A(D) core complex in vitro. The PP2A(C):TIPRL complex does not show phosphatase activity. May play a role in the regulation of ATM/ATR signaling pathway controlling DNA replication and repair.
Sequence similarities	Belongs to the TIP41 family.
Post-translational modifications	Phosphorylated upon DNA damage, probably by ATM or ATR.
Cellular localization	Cytoplasm.

Images



Immunohistochemistry (Formalin/PFA-fixed paraffin-embedded sections) analysis of human ovarian carcinoma tissue labelling TIPRL with ab70795 at 1/200 (1 µg/ml).
Detection: DAB.

Immunohistochemistry (Formalin/PFA-fixed paraffin-embedded sections) - Anti-TIPRL antibody (ab70795)



Western blot - Anti-TIPRL antibody (ab70795)

All lanes : Anti-TIPRL antibody (ab70795) at 0.04 µg/ml

Lane 1 : HeLa whole cell lysate at 50 µg/ml

Lane 2 : HeLa whole cell lysate at 15 µg/ml

Lane 3 : HeLa whole cell lysate at 5 µg/ml

Lane 4 : 293T whole cell lysate at 50 µg/ml

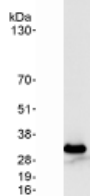
Lane 5 : NIH3T3 whole cell lysate at 50 µg/ml

Developed using the ECL technique.

Predicted band size: 32 kDa

Observed band size: 32 kDa

Exposure time: 3 seconds



Immunoprecipitation - Anti-TIPRL antibody (ab70795)

Detection of TIPRL by Western Blot of Immunoprecipitate.

ab70795 at 1 µg/ml staining TIPRL in HeLa whole cell lysate immunoprecipitated using ab70795 at 3 µg/mg lysate (1 mg/IP; 20% of IP loaded/lane).

Detection: Chemiluminescence with exposure time of 3 seconds.

Please note: All products are "FOR RESEARCH USE ONLY AND ARE NOT INTENDED FOR DIAGNOSTIC OR THERAPEUTIC USE"

Our Abpromise to you: Quality guaranteed and expert technical support

- Replacement or refund for products not performing as stated on the datasheet
- Valid for 12 months from date of delivery
- Response to your inquiry within 24 hours
- We provide support in Chinese, English, French, German, Japanese and Spanish
- Extensive multi-media technical resources to help you
- We investigate all quality concerns to ensure our products perform to the highest standards

If the product does not perform as described on this datasheet, we will offer a refund or replacement. For full details of the Abpromise, please visit <https://www.abcam.com/abpromise> or contact our technical team.

Terms and conditions

- Guarantee only valid for products bought direct from Abcam or one of our authorized distributors