

Product datasheet

Anti-TLR10 antibody ab21273

1 Image

Overview

<b>Product name</b>	Anti-TLR10 antibody
<b>Description</b>	Rabbit polyclonal to TLR10
<b>Host species</b>	Rabbit
<b>Tested applications</b>	<b>Suitable for:</b> WB, ICC/IF
<b>Species reactivity</b>	<b>Reacts with:</b> Human
<b>Immunogen</b>	Synthetic peptide corresponding to 14 amino acids near the middle of TLR10 (Human).
<b>Positive control</b>	Human lymph node cell lysate.

Properties

<b>Form</b>	Liquid
<b>Storage instructions</b>	Shipped at 4°C. Store at +4°C.
<b>Storage buffer</b>	Preservative: 0.02% Sodium azide Constituent: PBS
<b>Purification notes</b>	Ion exchange chromatography.
<b>Clonality</b>	Polyclonal
<b>Isotype</b>	IgG

Applications

Our [Abpromise guarantee](#) covers the use of **ab21273** in the following tested applications.

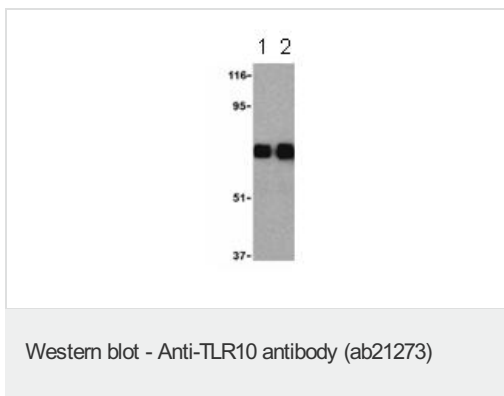
The application notes include recommended starting dilutions; optimal dilutions/concentrations should be determined by the end user.

Application	Abreviews	Notes
WB		Use a concentration of 0.5 - 1 µg/ml. Predicted molecular weight: 94 kDa. Can be blocked with <a href="#">Active human TLR10 peptide (ab39866)</a> .
ICC/IF		Use a concentration of 20 µg/ml.

Target

<b>Function</b>	Participates in the innate immune response to microbial agents. Acts via MYD88 and TRAF6, leading to NF-kappa-B activation, cytokine secretion and the inflammatory response.
<b>Tissue specificity</b>	Highly expressed in spleen, lymph node, thymus, tonsil and at lower levels in lung. Highly expressed in promyelocytic HL-60 cells and in B-cell lines.
<b>Sequence similarities</b>	Belongs to the Toll-like receptor family. Contains 15 LRR (leucine-rich) repeats. Contains 1 LRRCT domain. Contains 1 TIR domain.
<b>Cellular localization</b>	Membrane.

## Images



**Lane 1 :** Anti-TLR10 antibody (ab21273) at 0.5 µg/ml

**Lane 2 :** Anti-TLR10 antibody (ab21273) at 1 µg/ml

**All lanes :** Human lymph node cell lysates

**Predicted band size:** 94 kDa

**Observed band size:** 75 kDa

[why is the actual band size different from the predicted?](#)

**Please note:** All products are "FOR RESEARCH USE ONLY AND ARE NOT INTENDED FOR DIAGNOSTIC OR THERAPEUTIC USE"

## Our Abpromise to you: Quality guaranteed and expert technical support

- Replacement or refund for products not performing as stated on the datasheet
- Valid for 12 months from date of delivery
- Response to your inquiry within 24 hours
- We provide support in Chinese, English, French, German, Japanese and Spanish
- Extensive multi-media technical resources to help you
- We investigate all quality concerns to ensure our products perform to the highest standards

If the product does not perform as described on this datasheet, we will offer a refund or replacement. For full details of the Abpromise, please visit <https://www.abcam.com/abpromise> or contact our technical team.

## Terms and conditions

- Guarantee only valid for products bought direct from Abcam or one of our authorized distributors