

Product datasheet

Anti-TLR3 antibody [40C1285.6] (Phycoerythrin) ab45093

★★★★☆ 2 Abreviews 1 References 3 Images

Overview

| | |
|----------------------------|---|
| Product name | Anti-TLR3 antibody [40C1285.6] (Phycoerythrin) |
| Description | Mouse monoclonal [40C1285.6] to TLR3 (Phycoerythrin) |
| Host species | Mouse |
| Conjugation | Phycoerythrin. Ex: 488nm, Em: 575nm |
| Tested applications | Suitable for: WB, Flow Cyt |
| Species reactivity | Reacts with: Human |
| Immunogen | This antibody was developed against KLH-conjugated synthetic peptide of human TLR3. |
| Positive control | Human intestine or Ramos. |

Properties

| | |
|-----------------------------|---|
| Form | Liquid |
| Storage instructions | Shipped at 4°C. Store at +4°C. |
| Storage buffer | Preservative: 0.02% Sodium Azide Constituents: PBS |
| Purity | Protein G purified |
| Clonality | Monoclonal |
| Clone number | 40C1285.6 |
| Isotype | IgG1 |

Applications

Our [Abpromise guarantee](#) covers the use of **ab45093** in the following tested applications.

The application notes include recommended starting dilutions; optimal dilutions/concentrations should be determined by the end user.

| Application | Abreviews | Notes |
|-------------|-----------|-------|
| WB | ★★★★☆ | |

| Application | Abreviews | Notes |
|---|--|-------|
| Flow Cyt | ★★★★☆ | |
| Application notes | <p>FACS:(Intracellular) Use 2 - 5µg for 10⁶ cells.</p> <p>WB: Use at a concentration of 1 - 3 µg/ml. Predicted molecular weight: 104 kDa.</p> <p>This antibody has tested negative by western blot in mouse intestine cell lysate.</p> <p>Not yet tested in other applications.</p> <p>Optimal dilutions/concentrations should be determined by the end user.</p> | |
| Target | | |
| Function | <p>Key component of innate and adaptive immunity. TLRs (Toll-like receptors) control host immune response against pathogens through recognition of molecular patterns specific of microorganisms. TLR3 is a nucleotide-sensing TLR which is activated by double-stranded RNA, a sign of viral infection. Acts via MYD88 and TRAF6, leading to NF-kappa-B activation, cytokine secretion and the inflammatory response.</p> | |
| Tissue specificity | <p>Expressed at high level in placenta and pancreas. Also detected in CD11c+ immature dendritic cells. Only expressed in dendritic cells and not in other leukocytes, including monocyte precursors. TLR3 is the TLR that is expressed most strongly in the brain, especially in astrocytes, glia, and neurons.</p> | |
| Involvement in disease | <p>Defects in TLR3 are associated with herpes simplex encephalitis type 2 (HSE2) [MIM:613002]. HSE is a rare complication of human herpesvirus 1 (HHV-1) infection, occurring in only a small minority of HHV-1 infected individuals. HSE is characterized by hemorrhagic necrosis of parts of the temporal and frontal lobes. Onset is over several days and involves fever, headache, seizures, stupor, and often coma, frequently with a fatal outcome. Note=TLR3 mutations predispose otherwise healthy individuals to isolated herpes simplex encephalitis through a mechanism that involves impaired IFNs production and reduced immune defense against viral infection in the central nervous system.</p> | |
| Sequence similarities | <p>Belongs to the Toll-like receptor family.</p> <p>Contains 22 LRR (leucine-rich) repeats.</p> <p>Contains 1 LRRCT domain.</p> <p>Contains 1 LRRNT domain.</p> <p>Contains 1 TIR domain.</p> | |
| Domain | <p>ds-RNA binding is mediated by LRR 1 to 3, and LRR 17 to 18.</p> | |
| Post-translational modifications | <p>Heavily N-glycosylated, except on that part of the surface of the ectodomain that is involved in ligand binding.</p> | |
| Cellular localization | <p>Endoplasmic reticulum membrane. Endosome membrane.</p> | |

Images



Western blot - Anti-TLR3 antibody [40C1285.6]
(Phycoerythrin) (ab45093)
This image is courtesy of an anonymous Abreview

All lanes : Anti-TLR3 antibody [40C1285.6]

(Phycoerythrin) (ab45093) at 1 µg/ml

Lane 1 : A459 cell lysate

Lane 2 : Human skin tissue lysate

Lane 3 : Human lung tissue lysate

Lane 4 : Human dendritic cell lysate

Lane 5 : Human macrophage cell lysate

Lysates/proteins at 15 µg per lane.

Secondary

All lanes : HRP-conjugated Goat anti-mouse

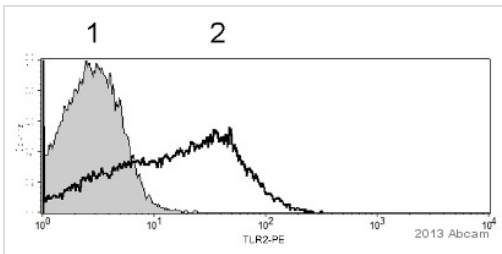
IgG at 1/2000 dilution

Performed under reducing conditions.

Predicted band size: 104 kDa

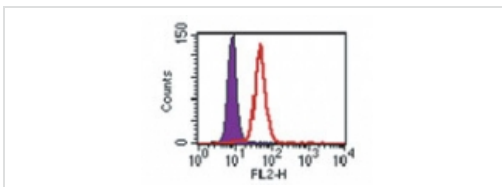
Observed band size: 104 kDa

Exposure time: 10 minutes



Flow Cytometry - Anti-TLR3 antibody [40C1285.6]
(Phycoerythrin) (ab45093)
This image is courtesy of an anonymous Abreview

ab45093 staining TLR3 in Human A549 (lung epithelial) cell line by Flow Cytometry. The sample was incubated with the primary antibody (5µg/ml in 0.1% Saponin + 1% FCS in PBS) for 45 minutes at 4°C. 1 = isotype control, 2 = ab45093



Flow Cytometry - Anti-TLR3 antibody [40C1285.6]
(Phycoerythrin) (ab45093)

ab45093, at 3 ug/ 1X10⁶ cells, staining Ramos cells by Intracellular flow cytometric analysis. Toll-Like-Receptor3 (open peak) and isotype negative control (shaded peak).

Please note: All products are "FOR RESEARCH USE ONLY AND ARE NOT INTENDED FOR DIAGNOSTIC OR THERAPEUTIC USE"

Our Abpromise to you: Quality guaranteed and expert technical support

- Replacement or refund for products not performing as stated on the datasheet
- Valid for 12 months from date of delivery
- Response to your inquiry within 24 hours

- We provide support in Chinese, English, French, German, Japanese and Spanish
- Extensive multi-media technical resources to help you
- We investigate all quality concerns to ensure our products perform to the highest standards

If the product does not perform as described on this datasheet, we will offer a refund or replacement. For full details of the Abpromise, please visit <https://www.abcam.com/abpromise> or contact our technical team.

Terms and conditions

- Guarantee only valid for products bought direct from Abcam or one of our authorized distributors