

## Product datasheet

# Anti-TMED2 antibody ab97600

1 Image

### Overview

<b>Product name</b>	Anti-TMED2 antibody
<b>Description</b>	Rabbit polyclonal to TMED2
<b>Host species</b>	Rabbit
<b>Tested applications</b>	<b>Suitable for:</b> WB
<b>Species reactivity</b>	<b>Reacts with:</b> Human <b>Predicted to work with:</b> Mouse, Rat, Zebrafish
<b>Immunogen</b>	Recombinant protein fragment corresponding to a region within amino acids 9 and 201 of Human TMED2 (AAH25957).
<b>Positive control</b>	293T, A431, Jurkat or Raji cell lysate.

### Properties

<b>Form</b>	Liquid
<b>Storage instructions</b>	Shipped at 4°C. Upon delivery aliquot. Store at -20°C or -80°C. Avoid freeze / thaw cycle.
<b>Storage buffer</b>	Preservative: 0.01% Thimerosal (merthiolate) Constituents: 20% Glycerol, 0.1M Tris, 0.1M Glycine, pH 7
<b>Purity</b>	Immunogen affinity purified
<b>Clonality</b>	Polyclonal
<b>Isotype</b>	IgG

### Applications

Our [Abpromise guarantee](#) covers the use of **ab97600** in the following tested applications.

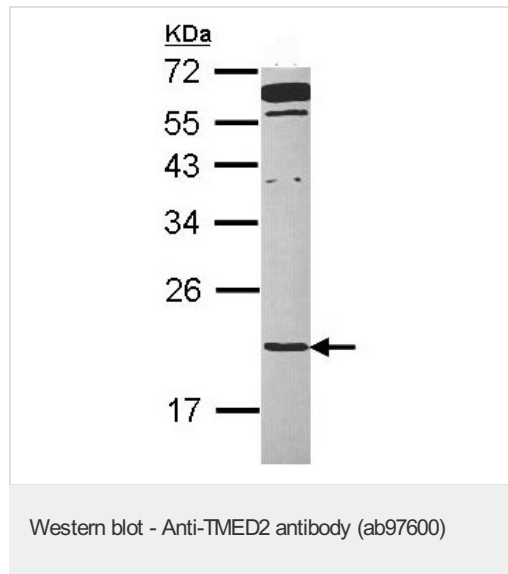
The application notes include recommended starting dilutions; optimal dilutions/concentrations should be determined by the end user.

Application	Abreviews	Notes
WB		1/500 - 1/3000. Predicted molecular weight: 23 kDa.

### Target

<b>Function</b>	Could have a role in the budding of coatamer-coated and other species of coated vesicles. Could bind cargo molecules to collect them into budding vesicles.
<b>Sequence similarities</b>	Belongs to the EMP24/GP25L family. Contains 1 GOLD domain.
<b>Cellular localization</b>	Cytoplasmic vesicle membrane. Cytoplasmic vesicle > COPI-coated vesicle membrane. Golgi apparatus membrane. Golgi-derived coatamer-coated vesicles.

## Images



Anti-TMED2 antibody (ab97600) at 1/1000 dilution + Raji whole cell lysate at 30 µg

**Predicted band size:** 23 kDa

12% SDS PAGE

**Please note:** All products are "FOR RESEARCH USE ONLY AND ARE NOT INTENDED FOR DIAGNOSTIC OR THERAPEUTIC USE"

## Our Abpromise to you: Quality guaranteed and expert technical support

- Replacement or refund for products not performing as stated on the datasheet
- Valid for 12 months from date of delivery
- Response to your inquiry within 24 hours
- We provide support in Chinese, English, French, German, Japanese and Spanish
- Extensive multi-media technical resources to help you
- We investigate all quality concerns to ensure our products perform to the highest standards

If the product does not perform as described on this datasheet, we will offer a refund or replacement. For full details of the Abpromise, please visit <https://www.abcam.com/abpromise> or contact our technical team.

## Terms and conditions

- Guarantee only valid for products bought direct from Abcam or one of our authorized distributors