

Product datasheet

Anti-TMEM38A antibody ab113676

[2 Images](#)

Overview

Product name	Anti-TMEM38A antibody
Description	Rabbit polyclonal to TMEM38A
Host species	Rabbit
Tested applications	Suitable for: WB, ELISA, IHC-P
Species reactivity	Reacts with: Rat, Human Predicted to work with: Mouse
Immunogen	Synthetic peptide from the C terminal region of Human TMEM38A, conjugated to KLH.
Positive control	Human skeletal muscle tissue; Rat skeletal muscle tissue lysate

Properties

Form	Liquid
Storage instructions	Shipped at 4°C. Store at +4°C short term (1-2 weeks). Store at -20°C or -80°C. Avoid freeze / thaw cycle.
Storage buffer	Preservative: 0.02% Sodium azide Constituent: 99% PBS
Purity	Immunogen affinity purified
Clonality	Polyclonal
Isotype	IgG

Applications

Our [Abpromise guarantee](#) covers the use of **ab113676** in the following tested applications.

The application notes include recommended starting dilutions; optimal dilutions/concentrations should be determined by the end user.

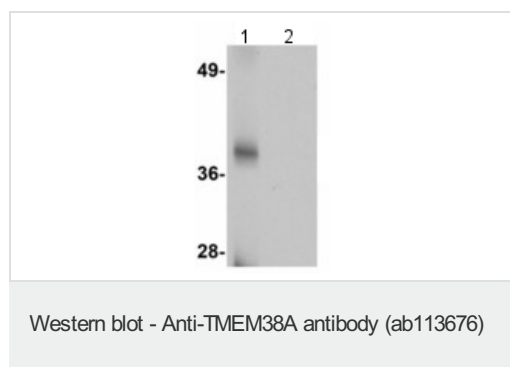
Application	Abreviews	Notes
WB		Use a concentration of 1 - 2 µg/ml. Predicted molecular weight: 33 kDa.
ELISA		Use at an assay dependent concentration.

Application	Abreviews	Notes
IHC-P		Use a concentration of 5 µg/ml.

Target

Function	Monovalent cation channel required for maintenance of rapid intracellular calcium release. May act as a potassium counter-ion channel that functions in synchronization with calcium release from intracellular stores.
Sequence similarities	Belongs to the TMEM38 family.
Domain	The second transmembrane domain has been proposed to cross only half of the lipid bilayer and to loop back into the cytosol, so that the domains on each side of this domain are both found on the cytosolic face of the membrane. The cytosolic loop may form an ion-conducting pore.
Cellular localization	Sarcoplasmic reticulum membrane. Nucleus membrane.

Images

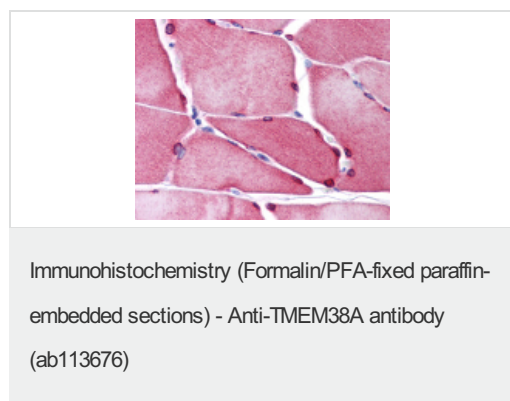


All lanes : Anti-TMEM38A antibody (ab113676) at 1 µg/ml

Lane 1 : Rat skeletal muscle tissue lysate

Lane 2 : Rat skeletal muscle tissue lysate with blocking peptide

Predicted band size: 33 kDa



ab113638, at 5 µg/ml, staining TMEM38A in formalin fixed, paraffin embedded Human skeletal muscle tissue by Immunohistochemistry.

Please note: All products are "FOR RESEARCH USE ONLY AND ARE NOT INTENDED FOR DIAGNOSTIC OR THERAPEUTIC USE"

Our Abpromise to you: Quality guaranteed and expert technical support

- Replacement or refund for products not performing as stated on the datasheet

- Valid for 12 months from date of delivery
- Response to your inquiry within 24 hours

- We provide support in Chinese, English, French, German, Japanese and Spanish
- Extensive multi-media technical resources to help you
- We investigate all quality concerns to ensure our products perform to the highest standards

If the product does not perform as described on this datasheet, we will offer a refund or replacement. For full details of the Abpromise, please visit <https://www.abcam.com/abpromise> or contact our technical team.

Terms and conditions

- Guarantee only valid for products bought direct from Abcam or one of our authorized distributors