

Product datasheet

Anti-TMEM49 antibody ab116006

1 Image

Overview

Product name	Anti-TMEM49 antibody
Description	Rabbit polyclonal to TMEM49
Host species	Rabbit
Tested applications	Suitable for: WB
Species reactivity	Reacts with: Human
Immunogen	Synthetic peptide conjugated to KLH, corresponding to a region within C terminal amino acids 376-406 of Human TMEM49 (NP_112200.2).
Positive control	HepG2 cell line lysate.

Properties

Form	Liquid
Storage instructions	Shipped at 4°C. Store at 4°C (up to 6 months). Store at -20°C long term.
Storage buffer	Preservative: 0.09% Sodium azide Constituent: 99% PBS
Purity	Immunogen affinity purified
Purification notes	ab116006 was purified through a Protein A column, followed by peptide affinity purification.
Clonality	Polyclonal
Isotype	IgG

Applications

Our [Abpromise guarantee](#) covers the use of **ab116006** in the following tested applications.

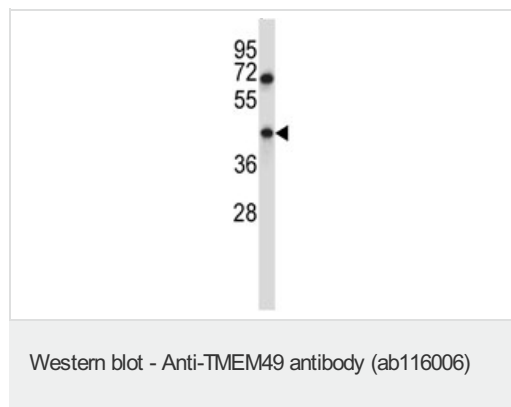
The application notes include recommended starting dilutions; optimal dilutions/concentrations should be determined by the end user.

Application	Abreviews	Notes
WB		1/100 - 1/500. Predicted molecular weight: 46 kDa.

Target

Function	Stress-induced protein that, when overexpressed, promotes formation of intracellular vacuoles followed by cell death. May be involved in the cytoplasmic vacuolization of acinar cells during the early stage of acute pancreatitis. Plays a role in the initial stages of the autophagic process through its interaction with BECN1 (By similarity). Involved in cell-cell adhesion. Plays an essential role in formation of cell junctions.
Sequence similarities	Belongs to the VMP1 family.
Cellular localization	Endoplasmic reticulum-Golgi intermediate compartment membrane. Cell membrane. Vacuole membrane. Endoplasmic reticulum.

Images



Anti-TMEM49 antibody (ab116006) at 1/100 dilution + HepG2 cell line lysate at 35 µg

Predicted band size: 46 kDa

Please note: All products are "FOR RESEARCH USE ONLY AND ARE NOT INTENDED FOR DIAGNOSTIC OR THERAPEUTIC USE"

Our Abpromise to you: Quality guaranteed and expert technical support

- Replacement or refund for products not performing as stated on the datasheet
- Valid for 12 months from date of delivery
- Response to your inquiry within 24 hours
- We provide support in Chinese, English, French, German, Japanese and Spanish
- Extensive multi-media technical resources to help you
- We investigate all quality concerns to ensure our products perform to the highest standards

If the product does not perform as described on this datasheet, we will offer a refund or replacement. For full details of the Abpromise, please visit <https://www.abcam.com/abpromise> or contact our technical team.

Terms and conditions

- Guarantee only valid for products bought direct from Abcam or one of our authorized distributors