

Product datasheet

Anti-TOMM40 antibody ab99485

1 Image

Overview

Product name	Anti-TOMM40 antibody
Description	Goat polyclonal to TOMM40
Host species	Goat
Tested applications	Suitable for: WB
Species reactivity	Reacts with: Human Predicted to work with: Mouse, Rat, Cow, Dog, Pig, Xenopus laevis
Immunogen	Synthetic peptide: C-HTVALSTIGESNYH , corresponding to internal sequence amino acids 117-130 of Human TOMM40 (NP_006105.1). Run BLAST with Run BLAST with
Positive control	Human Brain (Cerebellum and Frontal Cortex) lysates.
General notes	Reported variants represent identical protein: NP_001122389.1, NP_001122388.1, NP_006105.1.

Properties

Form	Liquid
Storage instructions	Shipped at 4°C. Upon delivery aliquot and store at -20°C. Avoid repeated freeze / thaw cycles.
Storage buffer	Preservative: 0.02% Sodium Azide Constituents: 0.5% BSA, Tris buffered saline, pH 7.3
Purity	Immunogen affinity purified
Purification notes	ab99485 was purified from goat serum by ammonium sulphate precipitation followed by antigen affinity chromatography using the immunizing peptide.
Primary antibody notes	Reported variants represent identical protein: NP_001122389.1, NP_001122388.1, NP_006105.1.
Clonality	Polyclonal
Isotype	IgG

Applications

Our [Abpromise guarantee](#) covers the use of **ab99485** in the following tested applications.

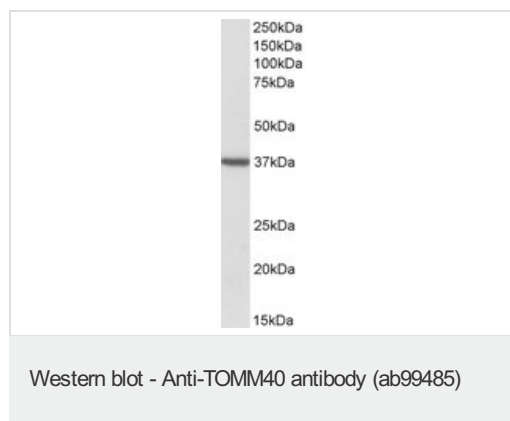
The application notes include recommended starting dilutions; optimal dilutions/concentrations should be determined by the end user.

Application	Abreviews	Notes
WB		Use a concentration of 1 - 3 µg/ml. Detects a band of approximately 37 kDa (predicted molecular weight: 38 kDa).

Target

Function	Channel-forming protein essential for import of protein precursors into mitochondria.
Sequence similarities	Belongs to the Tom40 family.
Cellular localization	Mitochondrion outer membrane.

Images



Anti-TOMM40 antibody (ab99485) at 2 µg/ml
+ Human Frontal Cortex lysate in RIPA buffer
at 35 µg

Developed using the ECL technique.

Predicted band size: 38 kDa

Primary incubation was 1 hour.

Please note: All products are "FOR RESEARCH USE ONLY AND ARE NOT INTENDED FOR DIAGNOSTIC OR THERAPEUTIC USE"

Our Abpromise to you: Quality guaranteed and expert technical support

- Replacement or refund for products not performing as stated on the datasheet
- Valid for 12 months from date of delivery
- Response to your inquiry within 24 hours
- We provide support in Chinese, English, French, German, Japanese and Spanish
- Extensive multi-media technical resources to help you
- We investigate all quality concerns to ensure our products perform to the highest standards

If the product does not perform as described on this datasheet, we will offer a refund or replacement. For full details of the Abpromise, please visit <https://www.abcam.com/abpromise> or contact our technical team.

Terms and conditions

- Guarantee only valid for products bought direct from Abcam or one of our authorized distributors