


Product datasheet

Anti-TPST2 antibody ab87407

1 References 1 Image

Overview

|                            |   |
|----------------------------|---|
| <b>Product name</b>        | Anti-TPST2 antibody   |
| <b>Description</b>         | Rabbit polyclonal to TPST2  |
| <b>Host species</b>        | Rabbit  |
| <b>Tested applications</b> | <b>Suitable for:</b> WB   |
| <b>Species reactivity</b>  | <b>Reacts with:</b> Human<br><b>Predicted to work with:</b> Mouse, Rat, Cow, Monkey                            |
| <b>Immunogen</b>           | Synthetic peptide conjugated to KLH derived from within residues 300 to the C-terminus of Human TPST2. Read Abcam's proprietary immunogen policy (Peptide available as <a href="#">ab98292</a> .) |
| <b>Positive control</b>    | This antibody gave a positive signal in Human liver tissue lysate.  |

Properties

|                             |  |
|-----------------------------|--|
| <b>Form</b>                 | Liquid   |
| <b>Storage instructions</b> | Shipped at 4°C. Store at +4°C short term (1-2 weeks). Upon delivery aliquot. Store at -20°C or -80°C. Avoid freeze / thaw cycle. |
| <b>Storage buffer</b>       | Preservative: 0.02% Sodium Azide<br>Constituents: 1% BSA, PBS, pH 7.4  |
| <b>Purity</b>               | Immunogen affinity purified  |
| <b>Clonality</b>            | Polyclonal   |
| <b>Isotype</b>              | IgG  |

Applications

Our [Abpromise guarantee](#) covers the use of **ab87407** in the following tested applications.

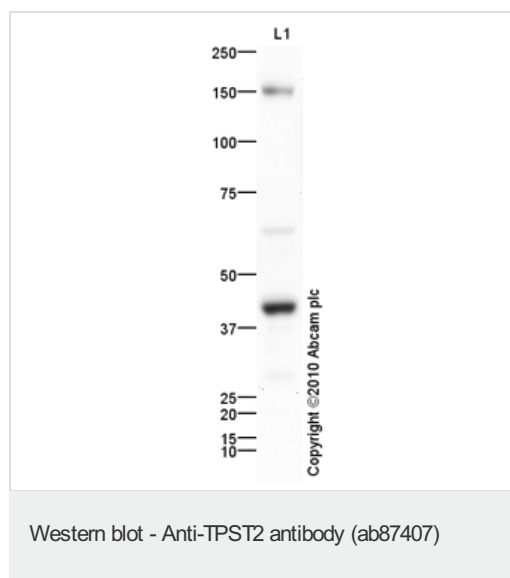
The application notes include recommended starting dilutions; optimal dilutions/concentrations should be determined by the end user.

| Application | Abreviews | Notes  |
|-------------|-----------|--|
| WB          |           | Use a concentration of 1 µg/ml. Detects a band of approximately 42 kDa (predicted molecular weight: 42 kDa). |

## Target

|                              |  |
|------------------------------|--|
| <b>Function</b>              | Catalyzes the O-sulfation of tyrosine residues within acidic motifs of polypeptides. |
| <b>Tissue specificity</b>    | Widely expressed.  |
| <b>Sequence similarities</b> | Belongs to the protein sulfotransferase family.                                      |
| <b>Cellular localization</b> | Golgi apparatus membrane.  |

## Images



Anti-TPST2 antibody (ab87407) at 1 µg/ml +  
Human liver tissue lysate - total protein  
(ab29889) at 10 µg

### Secondary

Goat polyclonal to Rabbit IgG - H&L - Pre-  
Adsorbed (HRP) at 1/3000 dilution

Developed using the ECL technique.

Performed under reducing conditions.

**Predicted band size:** 42 kDa

**Observed band size:** 42 kDa

**Additional bands at:** 150 kDa, 65 kDa. We  
are unsure as to the identity of these extra  
bands.

**Exposure time:** 2 minutes

**Please note:** All products are "FOR RESEARCH USE ONLY AND ARE NOT INTENDED FOR DIAGNOSTIC OR THERAPEUTIC USE"

## Our Abpromise to you: Quality guaranteed and expert technical support

- Replacement or refund for products not performing as stated on the datasheet
- Valid for 12 months from date of delivery
- Response to your inquiry within 24 hours
- We provide support in Chinese, English, French, German, Japanese and Spanish
- Extensive multi-media technical resources to help you
- We investigate all quality concerns to ensure our products perform to the highest standards

If the product does not perform as described on this datasheet, we will offer a refund or replacement. For full details of the Abpromise, please visit <https://www.abcam.com/abpromise> or contact our technical team.

## Terms and conditions

---

- Guarantee only valid for products bought direct from Abcam or one of our authorized distributors