

## Product datasheet

# Anti-TREX1 antibody ab67192

[1 References](#) [1 Image](#)

### Overview

<b>Product name</b>	Anti-TREX1 antibody
<b>Description</b>	Mouse polyclonal to TREX1
<b>Host species</b>	Mouse
<b>Tested applications</b>	<b>Suitable for:</b> WB
<b>Species reactivity</b>	<b>Reacts with:</b> Human
<b>Immunogen</b>	Full length protein, corresponding to amino acids 1-304 of Human TREX1

### Properties

<b>Form</b>	Liquid
<b>Storage instructions</b>	Shipped at 4°C. Upon delivery aliquot and store at -20°C or -80°C. Avoid repeated freeze / thaw cycles.
<b>Storage buffer</b>	Preservative: None Constituents: 1X PBS, pH 7.2
<b>Purity</b>	Protein A purified
<b>Clonality</b>	Polyclonal
<b>Isotype</b>	IgG

### Applications

Our [Abpromise guarantee](#) covers the use of **ab67192** in the following tested applications.

The application notes include recommended starting dilutions; optimal dilutions/concentrations should be determined by the end user.

Application	Abreviews	Notes
-------------	-----------	-------

WB

<b>Application notes</b>	WB: 1/500 - 1/1000. Detects a band of approximately 36 kDa (predicted molecular weight: 39 kDa). Detection Antibody Pair.  Not yet tested in other applications.
--------------------------	---

Optimal dilutions/concentrations should be determined by the end user.

## Target

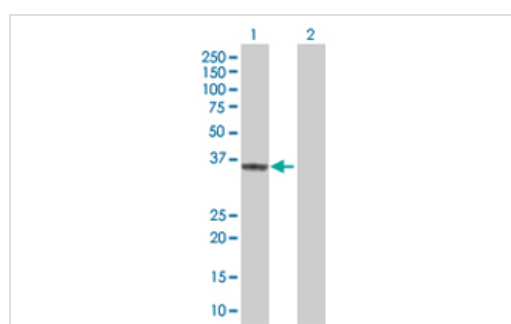
### Relevance

TREX1 is the major 3'→5' DNA exonuclease in human cells. The protein is a non processive exonuclease that may serve a proofreading function for a human DNA polymerase. It is also a component of the SET complex, and acts to rapidly degrade 3' ends of nicked DNA during granzyme A mediated cell death. Mutations in this gene result in Aicardi Goutieres syndrome, chilblain lupus, and Cree encephalitis. Multiple transcript variants encoding different isoforms have been found for this gene.

### Cellular localization

Nuclear

## Images



Western blot - Anti-TREX1 antibody (ab67192)

**All lanes :** Anti-TREX1 antibody (ab67192) at 1/500 dilution

**Lane 1 :** TREX1 transfected 293T cell lysate

**Lane 2 :** Non transfected 293T cell lysate

Lysates/proteins at 25 µg/ml per lane.

### Secondary

**All lanes :** Goat Anti-Mouse IgG (H&L)-HRP Conjugate at 1/2500 dilution

**Predicted band size:** 39 kDa

**Observed band size:** 36 kDa

**Please note:** All products are "FOR RESEARCH USE ONLY AND ARE NOT INTENDED FOR DIAGNOSTIC OR THERAPEUTIC USE"

## Our Abpromise to you: Quality guaranteed and expert technical support

- Replacement or refund for products not performing as stated on the datasheet
- Valid for 12 months from date of delivery
- Response to your inquiry within 24 hours
- We provide support in Chinese, English, French, German, Japanese and Spanish
- Extensive multi-media technical resources to help you
- We investigate all quality concerns to ensure our products perform to the highest standards

If the product does not perform as described on this datasheet, we will offer a refund or replacement. For full details of the Abpromise, please visit <https://www.abcam.com/abpromise> or contact our technical team.

## Terms and conditions

---

- Guarantee only valid for products bought direct from Abcam or one of our authorized distributors