


Product datasheet

Anti-TREX1 antibody ab83890

3 Images

Overview

Product name	Anti-TREX1 antibody
Description	Rabbit polyclonal to TREX1
Host species	Rabbit
Specificity	This antibody will not cross-react with the related protein TREX2.
Tested applications	Suitable for: ICC/IF, WB, ELISA, IHC-P
Species reactivity	Reacts with: Rat, Human Predicted to work with: Mouse 
Immunogen	A 15 amino acid synthetic peptide from the internal sequence of Human TREX1.
Positive control	Human spleen tissue lysate. Human spleen tissue.
General notes	The mouse cross reactivity is lot specific. Please contact technical team for more information.

Properties

Form	Liquid
Storage instructions	Shipped at 4°C. Store at +4°C.
Storage buffer	Preservative: 0.02% Sodium Azide Constituents: PBS
Purity	Immunogen affinity purified
Clonality	Polyclonal
Isotype	IgG

Applications

Our [Abpromise guarantee](#) covers the use of **ab83890** in the following tested applications.

The application notes include recommended starting dilutions; optimal dilutions/concentrations should be determined by the end user.

Application	Abreviews	Notes
ICC/IF		Use a concentration of 20 µg/ml.

Application	Abreviews	Notes
WB		Use a concentration of 1 - 2 µg/ml. Detects a band of approximately 31 kDa (predicted molecular weight: 39 kDa).
ELISA		Use at an assay dependent concentration.
IHC-P		Use a concentration of 2.5 µg/ml.

Target

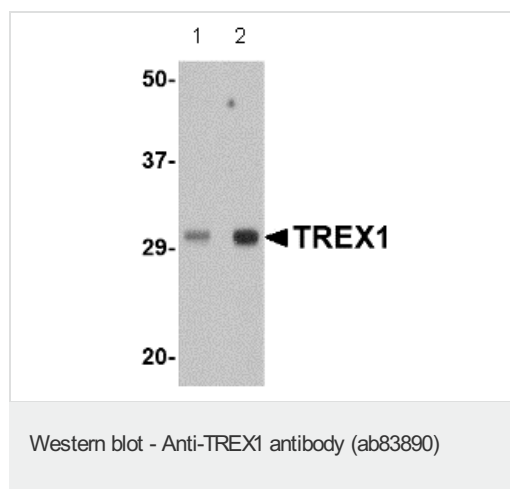
Relevance

TREX1 is the major 3'->5' DNA exonuclease in human cells. The protein is a non processive exonuclease that may serve a proofreading function for a human DNA polymerase. It is also a component of the SET complex, and acts to rapidly degrade 3' ends of nicked DNA during granzyme A mediated cell death. Mutations in this gene result in Aicardi Goutieres syndrome, chilblain lupus, and Cree encephalitis. Multiple transcript variants encoding different isoforms have been found for this gene.

Cellular localization

Nuclear

Images



Lane 1 : Anti-TREX1 antibody (ab83890) at 0.5 µg/ml

Lane 2 : Anti-TREX1 antibody (ab83890) at 1 µg/ml

All lanes : Human spleen tissue lysate

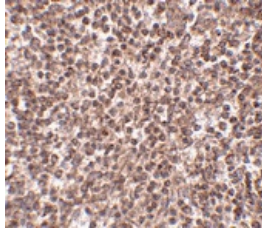
Lysates/proteins at 15 µg per lane.

Secondary

All lanes : anti-rabbit secondary

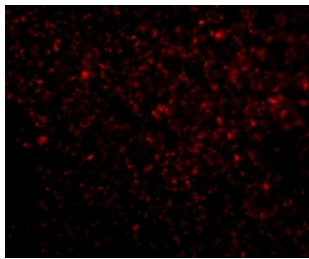
Predicted band size: 39 kDa

Observed band size: 31 kDa



ab83890 at 2.5µg/ml staining TREX1 in Human spleen tissue.

Immunohistochemistry (Formalin/PFA-fixed paraffin-embedded sections) - Anti-TREX1 antibody (ab83890)



Immunofluorescence of TREX1 in Human Spleen cells using ab83890 at 20 ug/ml.

Immunocytochemistry/ Immunofluorescence - Anti-TREX1 antibody (ab83890)

Please note: All products are "FOR RESEARCH USE ONLY AND ARE NOT INTENDED FOR DIAGNOSTIC OR THERAPEUTIC USE"

Our Abpromise to you: Quality guaranteed and expert technical support

- Replacement or refund for products not performing as stated on the datasheet
- Valid for 12 months from date of delivery
- Response to your inquiry within 24 hours
- We provide support in Chinese, English, French, German, Japanese and Spanish
- Extensive multi-media technical resources to help you
- We investigate all quality concerns to ensure our products perform to the highest standards

If the product does not perform as described on this datasheet, we will offer a refund or replacement. For full details of the Abpromise, please visit <https://www.abcam.com/abpromise> or contact our technical team.

Terms and conditions

- Guarantee only valid for products bought direct from Abcam or one of our authorized distributors