


Product datasheet

Anti-TRIP6 antibody ab12329

1 Image

Overview

Product name	Anti-TRIP6 antibody
Description	Rabbit polyclonal to TRIP6
Host species	Rabbit
Tested applications	Suitable for: WB
Species reactivity	Reacts with: Human Predicted to work with: Mouse, Gorilla 
Immunogen	A synthetic peptide which represented a portion of human TRIP6 encoded within exons 3 and 4.
Positive control	Purchase matching WB positive control: Recombinant Human TRIP6 protein >
General notes	Centrifuge tube to remove product from lid.

Properties

Form	Liquid
Storage instructions	Shipped at 4°C. Upon delivery aliquot and store at -20°C. Avoid freeze / thaw cycles.
Storage buffer	Preservative: 0.1% Sodium azide Constituents: 0.021% PBS, 1.815% Tris, 1.764% Sodium citrate
Purity	Immunogen affinity purified
Clonality	Polyclonal
Isotype	IgG

Applications

Our [Abpromise guarantee](#) covers the use of **ab12329** in the following tested applications.

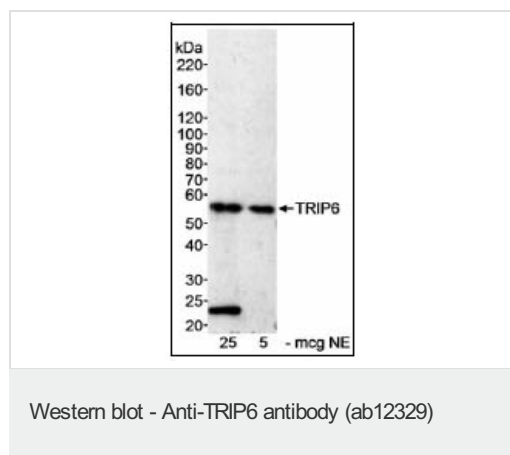
The application notes include recommended starting dilutions; optimal dilutions/concentrations should be determined by the end user.

Application	Abreviews	Notes
WB		1/1000 - 1/10000. Predicted molecular weight: 57.1 kDa.

Target

Function	Relays signals from the cell surface to the nucleus to weaken adherens junction and promote actin cytoskeleton reorganization and cell invasiveness. Involved in lysophosphatidic acid-induced cell adhesion and migration. Acts as a transcriptional coactivator for NF-kappa-B and JUN, and mediates the transrepression of these transcription factors induced by glucocorticoid receptor.
Tissue specificity	Abundantly expressed in kidney, liver and lung. Lower levels in heart, placenta and pancreas. Expressed in colonic epithelial cells. Up-regulated in colonic tumors.
Sequence similarities	Belongs to the zyxin/ajuba family. Contains 3 LIM zinc-binding domains.
Domain	The LIM zinc-binding domains mediate interaction with LPAR2 and with S.typhimurium protein sseI.
Post-translational modifications	Phosphorylation at Tyr-55 by SRC is required for enhancement of lysophosphatidic acid-induced cell migration. Tyr-55 is dephosphorylated by PTPN13.
Cellular localization	Cytoplasm > cytoskeleton. Cell junction > focal adhesion. Nucleus. Cytoplasm. Shuttles between nucleus and cytoplasm.

Images



Samples: Nuclear extract (NE) from HeLa cells. *Antibody:* Affinity purified rabbit anti-TRIP6 antibody (ab12329) used at 0.3 µg/ml. *Detection:* Chemiluminescence with an exposure time of 30 minutes.

Samples: Nuclear extract (NE) from HeLa cells. *Antibody:* Affinity purified rabbit anti-TRIP6 antibody (ab12329) used at 0.3 µg/ml. *Detection:* Chemiluminescence with an exposure time of 30 minutes.

Please note: All products are "FOR RESEARCH USE ONLY AND ARE NOT INTENDED FOR DIAGNOSTIC OR THERAPEUTIC USE"

Our Promise to you: Quality guaranteed and expert technical support

- Replacement or refund for products not performing as stated on the datasheet
- Valid for 12 months from date of delivery
- Response to your inquiry within 24 hours
- We provide support in Chinese, English, French, German, Japanese and Spanish
- Extensive multi-media technical resources to help you
- We investigate all quality concerns to ensure our products perform to the highest standards

If the product does not perform as described on this datasheet, we will offer a refund or replacement. For full details of the Abpromise, please visit <https://www.abcam.com/abpromise> or contact our technical team.

Terms and conditions

- Guarantee only valid for products bought direct from Abcam or one of our authorized distributors