

## Product datasheet

# Anti-TSH beta antibody ab93151

[1 References](#) [1 Image](#)

### Overview

<b>Product name</b>	Anti-TSH beta antibody
<b>Description</b>	Rabbit polyclonal to TSH beta
<b>Host species</b>	Rabbit
<b>Tested applications</b>	<b>Suitable for:</b> WB, ELISA
<b>Species reactivity</b>	<b>Reacts with:</b> Human
<b>Immunogen</b>	KLH conjugated synthetic peptide selected from the center region of human TSH beta (P01222).
<b>Positive control</b>	MDA-MB231 cell line lysate

### Properties

<b>Form</b>	Liquid
<b>Storage instructions</b>	Shipped at 4°C. Store at 4°C (up to 6 months). Store at -20°C long term.
<b>Storage buffer</b>	Preservative: 0.09% Sodium Azide Constituents: PBS
<b>Purity</b>	Immunogen affinity purified
<b>Clonality</b>	Polyclonal
<b>Isotype</b>	IgG

### Applications

Our [Abpromise guarantee](#) covers the use of **ab93151** in the following tested applications.

The application notes include recommended starting dilutions; optimal dilutions/concentrations should be determined by the end user.

Application	Abreviews	Notes
WB		
ELISA		

<b>Application notes</b>	ELISA: 1/1000. WB: 1/100 - 1/500. Predicted molecular weight: 16 kDa.
--------------------------	--

Not yet tested in other applications.

Optimal dilutions/concentrations should be determined by the end user.

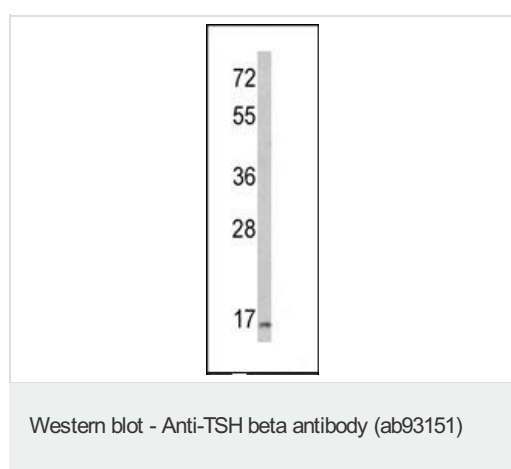
## Target

---

<b>Relevance</b>	Various hormones are secreted from the anterior pituitary during development and growth. Thyroid Stimulating Hormone (TSH) is secreted from the anterior pituitary and controls thyroid structure and metabolism
<b>Cellular localization</b>	Secreted

## Images

---



Anti-TSH beta antibody (ab93151) at 1/100 dilution + MDA-MB231 cell line lysate at 12.5 µg

**Predicted band size:** 16 kDa

**Please note:** All products are "FOR RESEARCH USE ONLY AND ARE NOT INTENDED FOR DIAGNOSTIC OR THERAPEUTIC USE"

## Our Abpromise to you: Quality guaranteed and expert technical support

---

- Replacement or refund for products not performing as stated on the datasheet
- Valid for 12 months from date of delivery
- Response to your inquiry within 24 hours
- We provide support in Chinese, English, French, German, Japanese and Spanish
- Extensive multi-media technical resources to help you
- We investigate all quality concerns to ensure our products perform to the highest standards

If the product does not perform as described on this datasheet, we will offer a refund or replacement. For full details of the Abpromise, please visit <https://www.abcam.com/abpromise> or contact our technical team.

## Terms and conditions

---

- Guarantee only valid for products bought direct from Abcam or one of our authorized distributors