

Product datasheet

Anti-TTF1 antibody ab125650

3 Images

Overview

<b>Product name</b>	Anti-TTF1 antibody
<b>Description</b>	Rabbit polyclonal to TTF1
<b>Host species</b>	Rabbit
<b>Specificity</b>	ab125650 is predicted to not cross-react with other NK2 homeobox family members. At least three isoforms of TTF1 are known to exist; ab125650 will detect all three.
<b>Tested applications</b>	<b>Suitable for:</b> ICC/IF, IHC-P, WB
<b>Species reactivity</b>	<b>Reacts with:</b> Mouse, Rat, Human
<b>Immunogen</b>	Synthetic peptide, corresponding to 16 amino acids near the N terminus of Human TTF1 (P43699).
<b>Positive control</b>	Rat lung tissue lysate.

Properties

<b>Form</b>	Liquid
<b>Storage instructions</b>	Shipped at 4°C. Upon delivery aliquot and store at -20°C. Avoid repeated freeze / thaw cycles.
<b>Storage buffer</b>	Preservative: 0.02% Sodium azide Constituent: 99% PBS
<b>Purity</b>	Immunogen affinity purified
<b>Purification notes</b>	ab125650 is affinity chromatography purified via peptide column.
<b>Clonality</b>	Polyclonal
<b>Isotype</b>	IgG

Applications

Our [Abpromise guarantee](#) covers the use of **ab125650** in the following tested applications.

The application notes include recommended starting dilutions; optimal dilutions/concentrations should be determined by the end user.

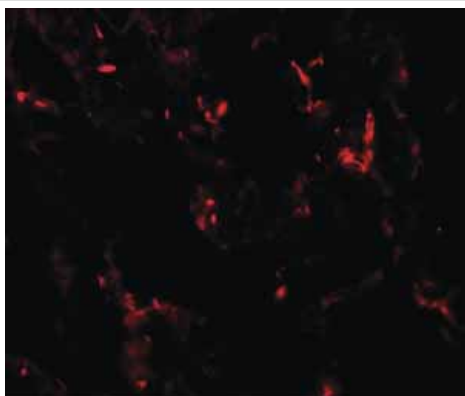
Application	Abreviews	Notes
ICC/IF		Use a concentration of 20 µg/ml.

Application	Abreviews	Notes
IHC-P		Use a concentration of 2.5 µg/ml.
WB		Use a concentration of 0.25 - 0.5 µg/ml. Predicted molecular weight: 39 kDa.

## Target

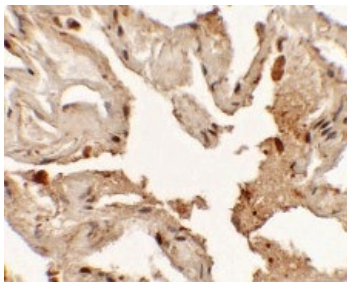
<b>Function</b>	Transcription factor that binds and activates the promoter of thyroid specific genes such as thyroglobulin, thyroperoxidase, and thyrotropin receptor. Crucial in the maintenance of the thyroid differentiation phenotype. May play a role in lung development and surfactant homeostasis.
<b>Tissue specificity</b>	Thyroid and lung.
<b>Involvement in disease</b>	Defects in NKX2-1 are the cause of benign hereditary chorea (BHC) [MIM:118700]; also known as hereditary chorea without dementia. BHC is an autosomal dominant movement disorder. The early onset of symptoms (usually before the age of 5) and the observation that in some BHC families the symptoms tend to decrease in adulthood suggests that the disorder results from a developmental disturbance of the brain. BHC is non-progressive and patients have normal or slightly below normal intelligence. There is considerable inter- and intrafamilial variability, including dysarthria, axial dystonia and gait disturbances. Defects in NKX2-1 are the cause of choreoathetosis, hypothyroidism, and neonatal respiratory distress (CHNRD) [MIM:610978]. This syndrome include neurological, thyroid, and respiratory problems.
<b>Sequence similarities</b>	Belongs to the NK-2 homeobox family. Contains 1 homeobox DNA-binding domain.
<b>Post-translational modifications</b>	Phosphorylated on serine residues.
<b>Cellular localization</b>	Nucleus.

## Images



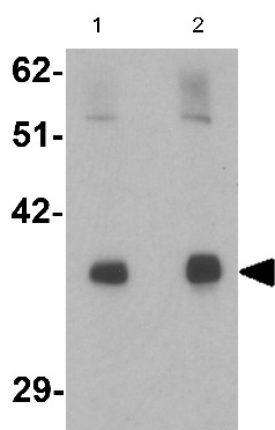
Immunofluorescence of TTF1 in Human lung tissue with ab125650 at 20 µg/mL.

Immunocytochemistry/ Immunofluorescence - Anti-TTF1 antibody (ab125650)



Immunohistochemistry of TTF1 in Human lung tissue with ab125650 at 2.5 µg/mL.

Immunohistochemistry (Formalin/PFA-fixed paraffin-embedded sections) - Anti-TTF1 antibody (ab125650)



**Lane 1** : Anti-TTF1 antibody (ab125650) at 1 µg/ml

**Lane 2** : Anti-TTF1 antibody (ab125650) at 2 µg/ml

**All lanes** : Rat lung tissue lysate

Lysates/proteins at 15 µg per lane.

**Predicted band size:** 39 kDa

Western blot - Anti-TTF1 antibody (ab125650)

**Please note:** All products are "FOR RESEARCH USE ONLY AND ARE NOT INTENDED FOR DIAGNOSTIC OR THERAPEUTIC USE"

### Our Abpromise to you: Quality guaranteed and expert technical support

- Replacement or refund for products not performing as stated on the datasheet
- Valid for 12 months from date of delivery
- Response to your inquiry within 24 hours
- We provide support in Chinese, English, French, German, Japanese and Spanish
- Extensive multi-media technical resources to help you
- We investigate all quality concerns to ensure our products perform to the highest standards

If the product does not perform as described on this datasheet, we will offer a refund or replacement. For full details of the Abpromise, please visit <https://www.abcam.com/abpromise> or contact our technical team.

### Terms and conditions

- Guarantee only valid for products bought direct from Abcam or one of our authorized distributors