

## Product datasheet

# Anti-Topoisomerase II beta antibody ab72334

★★★★☆ 1 Abreviews 1 References 4 Images

### Overview

<b>Product name</b>	Anti-Topoisomerase II beta antibody
<b>Description</b>	Rabbit polyclonal to Topoisomerase II beta
<b>Host species</b>	Rabbit
<b>Tested applications</b>	<b>Suitable for:</b> WB, IP, IHC-P
<b>Species reactivity</b>	<b>Reacts with:</b> Human <b>Predicted to work with:</b> Chimpanzee, Gorilla
<b>Immunogen</b>	Synthetic peptide from a region between residue 1475 and 1525 of human Topoisomerase II beta (NP_001059.2)
<b>Positive control</b>	Whole cell lysate from HeLa and 293T cells.

### Properties

<b>Form</b>	Liquid
<b>Storage instructions</b>	Shipped at 4°C. Upon delivery aliquot and store at -20°C. Avoid freeze / thaw cycles.
<b>Storage buffer</b>	Preservative: 0.09% Sodium azide Constituents: 1% BSA, Tris buffered saline
<b>Purity</b>	Immunogen affinity purified
<b>Clonality</b>	Polyclonal
<b>Isotype</b>	IgG

### Applications

Our [Abpromise guarantee](#) covers the use of **ab72334** in the following tested applications.

The application notes include recommended starting dilutions; optimal dilutions/concentrations should be determined by the end user.

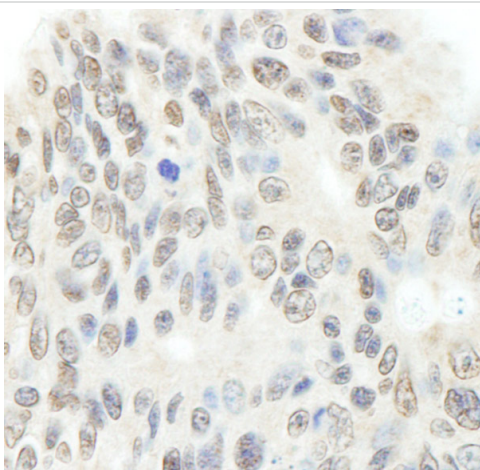
Application	Abreviews	Notes
WB		1/2000 - 1/10000. Detects a band of approximately 210 kDa (predicted molecular weight: 183 kDa).
IP		Use at 2-5 µg/mg of lysate.

Application	Abreviews	Notes
IHC-P		Use a concentration of 1 µg/ml. Perform heat mediated antigen retrieval with citrate buffer pH 6 before commencing with IHC staining protocol.

## Target

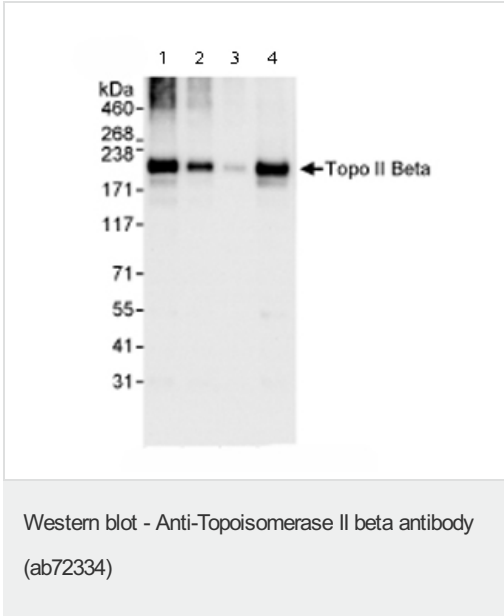
<b>Function</b>	Control of topological states of DNA by transient breakage and subsequent rejoining of DNA strands. Topoisomerase II makes double-strand breaks. Indirectly involved in vitamin D-coupled transcription regulation via its association with the WINAC complex, a chromatin-remodeling complex recruited by vitamin D receptor (VDR), which is required for the ligand-bound VDR-mediated transrepression of the CYP27B1 gene.
<b>Sequence similarities</b>	Belongs to the type II topoisomerase family.
<b>Post-translational modifications</b>	Phosphorylated upon DNA damage, probably by ATM or ATR.
<b>Cellular localization</b>	Cytoplasm. Nucleus > nucleolus.

## Images



Immunohistochemistry (Formalin/PFA-fixed paraffin-embedded sections) analysis of human ovarian carcinoma tissue labelling Topoisomerase II beta with ab72334 at 1/200 (1 µg/ml). Detection: DAB.

Immunohistochemistry (Formalin/PFA-fixed paraffin-embedded sections) - Anti-Topoisomerase II beta antibody (ab72334)



**All lanes** : Anti-Topoisomerase II beta antibody (ab72334) at 0.04 µg/ml

**Lane 1** : Whole cell lysate from HeLa cells at 50 µg

**Lane 2** : Whole cell lysate from HeLa cells at 15 µg

**Lane 3** : Whole cell lysate from HeLa cells at 5 µg

**Lane 4** : Whole cell lysate from 293T cells at 50 µg

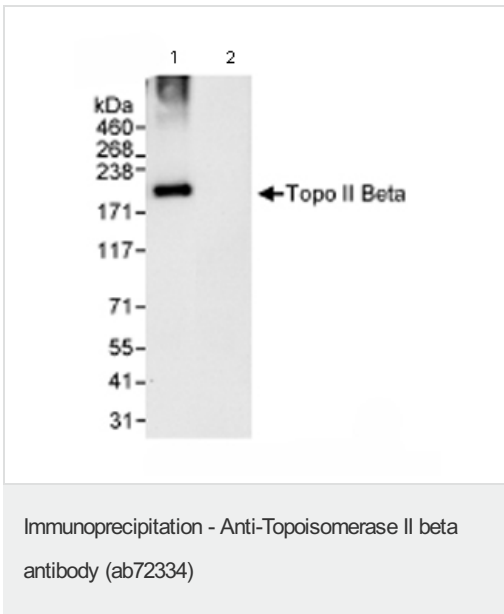
Developed using the ECL technique.

**Predicted band size:** 183 kDa

**Observed band size:** 210 kDa

[why is the actual band size different from the predicted?](#)

**Exposure time:** 30 seconds



Immunoprecipitation/ Western Blot of Topoisomerase II beta.

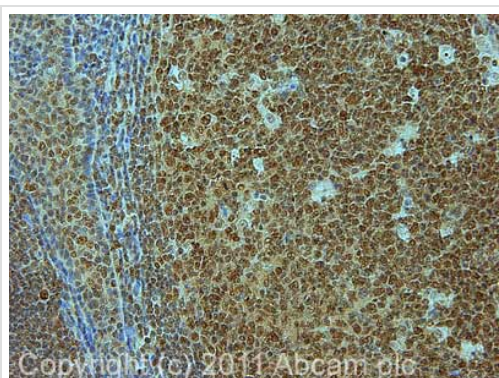
Lane 1: ab72334 at 3µg/mg whole cell lysate.

Lane 2: Control IgG.

ab72334 at 0.1µg/ml for WB.

Whole cell lysate from HeLa cells at 1mg for IP, 20% of IP loaded.

Chemiluminescence with an exposure time of 30 seconds.



Immunohistochemistry (Formalin/PFA-fixed paraffin-embedded sections) - Anti-Topoisomerase II beta antibody (ab72334)

IHC image of ab72334 staining in human normal tonsil formalin fixed paraffin embedded tissue section, performed on a Leica Bond™ system using the standard protocol F. The section was pre-treated using heat mediated antigen retrieval with sodium citrate buffer (pH6, epitope retrieval solution 1) for 20 mins. The section was then incubated with ab72334, 1µg/ml, for 15 mins at room temperature and detected using an HRP conjugated compact polymer system. DAB was used as the chromogen. The section was then counterstained with haematoxylin and mounted with DPX.

For other IHC staining systems (automated and non-automated) customers should optimize variable parameters such as antigen retrieval conditions, primary antibody concentration and antibody incubation times.

**Please note:** All products are "FOR RESEARCH USE ONLY AND ARE NOT INTENDED FOR DIAGNOSTIC OR THERAPEUTIC USE"

### Our Abpromise to you: Quality guaranteed and expert technical support

- Replacement or refund for products not performing as stated on the datasheet
- Valid for 12 months from date of delivery
- Response to your inquiry within 24 hours
- We provide support in Chinese, English, French, German, Japanese and Spanish
- Extensive multi-media technical resources to help you
- We investigate all quality concerns to ensure our products perform to the highest standards

If the product does not perform as described on this datasheet, we will offer a refund or replacement. For full details of the Abpromise, please visit <https://www.abcam.com/abpromise> or contact our technical team.

### Terms and conditions

- Guarantee only valid for products bought direct from Abcam or one of our authorized distributors