

Product datasheet

Anti-UBE2E3 antibody - N-terminal ab71640

2 Images

Overview

<b>Product name</b>	Anti-UBE2E3 antibody - N-terminal
<b>Description</b>	Rabbit polyclonal to UBE2E3 - N-terminal
<b>Host species</b>	Rabbit
<b>Tested applications</b>	<b>Suitable for:</b> ELISA, IHC-P, WB
<b>Species reactivity</b>	<b>Reacts with:</b> Mouse, Human
<b>Immunogen</b>	Synthetic peptide from the N-terminal region of human UBE2E3 conjugated to KLH
<b>Positive control</b>	Mouse liver tissue lysate; Paraffin embedded human hepatocarcinoma tissue.

Properties

<b>Form</b>	Liquid
<b>Storage instructions</b>	Shipped at 4°C. Upon delivery aliquot and store at -20°C. Avoid freeze / thaw cycles.
<b>Storage buffer</b>	Preservative: 0.09% Sodium Azide Constituents: PBS
<b>Purity</b>	Protein G purified
<b>Clonality</b>	Polyclonal
<b>Isotype</b>	IgG

Applications

Our [Abpromise guarantee](#) covers the use of **ab71640** in the following tested applications.

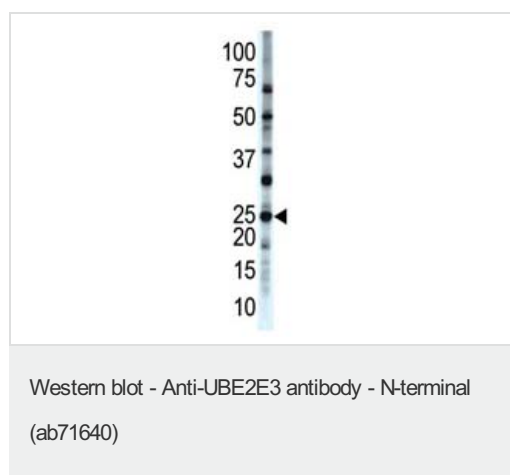
The application notes include recommended starting dilutions; optimal dilutions/concentrations should be determined by the end user.

Application	Abreviews	Notes
ELISA		1/1000.
IHC-P		1/50 - 1/100.
WB		1/100 - 1/500. Detects a band of approximately 23 kDa (predicted molecular weight: 23 kDa).

## Target

<b>Function</b>	Accepts ubiquitin from the E1 complex and catalyzes its covalent attachment to other proteins. In vitro catalyzes 'Lys-11'- and 'Lys-48'-, as well as 'Lys-63'-linked polyubiquitination. Participates in the regulation of transepithelial sodium transport in renal cells. May be involved in cell growth arrest.
<b>Tissue specificity</b>	Ubiquitously expressed at low levels. Highly expressed in skeletal muscle.
<b>Pathway</b>	Protein modification; protein ubiquitination.
<b>Sequence similarities</b>	Belongs to the ubiquitin-conjugating enzyme family.
<b>Cellular localization</b>	Nucleus. Cytoplasm. Shuttles between the nucleus and cytoplasm in a IPO11-dependent manner.

## Images

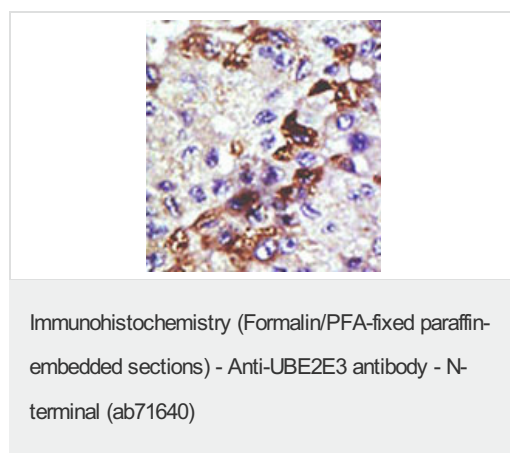


Anti-UBE2E3 antibody - N-terminal (ab71640)  
at 1/100 dilution + mouse liver tissue lysate at  
12.5 µg

**Predicted band size:** 23 kDa

**Observed band size:** 23 kDa

**Additional bands at:** 33 kDa, 50 kDa, 70 kDa. We are unsure as to the identity of these extra bands.



ab71640 at 1/50 dilution, staining UBE2E3 in human hepatocarcinoma by Immunohistochemistry, Formalin-fixed, Paraffin-embedded tissue, followed by peroxidase-conjugated secondary antibody and AEC staining.

**Please note:** All products are "FOR RESEARCH USE ONLY AND ARE NOT INTENDED FOR DIAGNOSTIC OR THERAPEUTIC USE"

## Our Abpromise to you: Quality guaranteed and expert technical support

- Replacement or refund for products not performing as stated on the datasheet
- Valid for 12 months from date of delivery

- Response to your inquiry within 24 hours
- We provide support in Chinese, English, French, German, Japanese and Spanish
- Extensive multi-media technical resources to help you
- We investigate all quality concerns to ensure our products perform to the highest standards

If the product does not perform as described on this datasheet, we will offer a refund or replacement. For full details of the Abpromise, please visit <https://www.abcam.com/abpromise> or contact our technical team.

### **Terms and conditions**

---

- Guarantee only valid for products bought direct from Abcam or one of our authorized distributors