


Product datasheet

Anti-UTP6 antibody ab125198

1 Image

Overview

|                            |   |
|----------------------------|---|
| <b>Product name</b>        | Anti-UTP6 antibody  |
| <b>Description</b>         | Rabbit polyclonal to UTP6   |
| <b>Host species</b>        | Rabbit  |
| <b>Tested applications</b> | <b>Suitable for:</b> IHC-P  |
| <b>Species reactivity</b>  | <b>Reacts with:</b> Human<br><b>Predicted to work with:</b> Rhesus monkey, Gorilla, Orangutan  |
| <b>Immunogen</b>           | Synthetic peptide, corresponding to a region within amino acids 565-597 of Human UTP6 (NP_060898.2).  |
| <b>Positive control</b>    | Human Breast Carcinoma and Prostate Carcinoma.  |

Properties

|                             |  |
|-----------------------------|--|
| <b>Form</b>                 | Liquid   |
| <b>Storage instructions</b> | Shipped at 4°C. Upon delivery aliquot and store at -20°C. Avoid freeze / thaw cycles.            |
| <b>Storage buffer</b>       | Preservative: 0.09% Sodium azide<br>Constituents: 99% Tris buffered saline, 0.1% BSA             |
| <b>Purity</b>               | Immunogen affinity purified  |
| <b>Purification notes</b>   | ab125198 was affinity purified using an epitope specific to UTP6 immobilized on a solid support. |
| <b>Clonality</b>            | Polyclonal   |
| <b>Isotype</b>              | IgG  |

Applications

Our [Abpromise guarantee](#) covers the use of **ab125198** in the following tested applications.

The application notes include recommended starting dilutions; optimal dilutions/concentrations should be determined by the end user.

| Application | Abreviews | Notes   |
|-------------|-----------|---|
| IHC-P       |           | 1/100 - 1/500. Perform heat mediated antigen retrieval with citrate buffer pH 6 before commencing with IHC staining protocol. Likely to work with frozen sections |

## Target

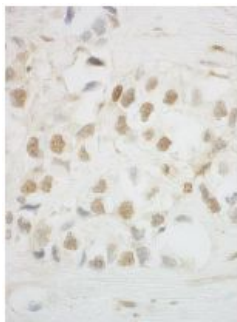
---

|                              |  |
|------------------------------|--|
| <b>Function</b>              | Involved in nucleolar processing of pre-18S ribosomal RNA. |
| <b>Sequence similarities</b> | Belongs to the UTP6 family.<br>Contains 5 HAT repeats.     |
| <b>Cellular localization</b> | Nucleus > nucleolus.                                       |

---

## Images

---



ab125198 at 1/500 dilution staining UTP6 in Formalin-Fixed, Paraffin-Embedded Human breast carcinoma tissue by Immunohistochemistry. Detection utilised DAB.

Immunohistochemistry (Formalin/PFA-fixed paraffin-embedded sections) - Anti-UTP6 antibody (ab125198)

**Please note:** All products are "FOR RESEARCH USE ONLY AND ARE NOT INTENDED FOR DIAGNOSTIC OR THERAPEUTIC USE"

## Our Abpromise to you: Quality guaranteed and expert technical support

---

- Replacement or refund for products not performing as stated on the datasheet
- Valid for 12 months from date of delivery
- Response to your inquiry within 24 hours
- We provide support in Chinese, English, French, German, Japanese and Spanish
- Extensive multi-media technical resources to help you
- We investigate all quality concerns to ensure our products perform to the highest standards

If the product does not perform as described on this datasheet, we will offer a refund or replacement. For full details of the Abpromise, please visit <https://www.abcam.com/abpromise> or contact our technical team.

## Terms and conditions

---

- Guarantee only valid for products bought direct from Abcam or one of our authorized distributors