

## Product datasheet

# Anti-Ubiquinol-Cytochrome C Reductase Core Protein I antibody [16D10AD9AH5] ab110252

★★★★★ 1 Abreviews 50 References 3 Images

### Overview

<b>Product name</b>	Anti-Ubiquinol-Cytochrome C Reductase Core Protein I antibody [16D10AD9AH5]
<b>Description</b>	Mouse monoclonal [16D10AD9AH5] to Ubiquinol-Cytochrome C Reductase Core Protein I
<b>Host species</b>	Mouse
<b>Tested applications</b>	<b>Suitable for:</b> Flow Cyt, ICC/IF, WB
<b>Species reactivity</b>	<b>Reacts with:</b> Mouse, Rat, Cow, Human
<b>Immunogen</b>	Bovine Ubiquinol-Cytochrome C Reductase Core Protein I protein.
<b>Positive control</b>	Human, Cow, Rat or Mouse heart mitochondrial lysate, HepG2 mitochondrial lysate. This antibody gave a positive result when used in the following methanol fixed cell lines: HCT116
<b>General notes</b>	This antibody clone is manufactured by Abcam. Product was previously marketed under the MitoSciences sub-brand.

If you require this antibody in a particular buffer formulation or a particular conjugate for your experiments, please contact [orders@abcam.com](mailto:orders@abcam.com) or you can find further information [here](#).

### Properties

<b>Form</b>	Liquid
<b>Storage instructions</b>	Shipped at 4°C. Store at +4°C. Do Not Freeze.
<b>Storage buffer</b>	Preservative: 0.02% Sodium azide Constituent: HEPES buffered saline
<b>Purity</b>	IgG fraction
<b>Purification notes</b>	ab110252 is produced in vitro using hybridomas grown in serum-free medium, and then purified by biochemical fractionation.
<b>Clonality</b>	Monoclonal
<b>Clone number</b>	16D10AD9AH5
<b>Isotype</b>	IgG1
<b>Light chain type</b>	kappa

## Applications

Our [Abpromise guarantee](#) covers the use of **ab110252** in the following tested applications.

The application notes include recommended starting dilutions; optimal dilutions/concentrations should be determined by the end user.

Application	Abreviews	Notes
Flow Cyt		Use 1µg for 10 <sup>6</sup> cells. <a href="#">ab170190</a> - Mouse monoclonal IgG1, is suitable for use as an isotype control with this antibody.
ICC/IF		1/50.
WB	★★★★★	Use a concentration of 0.5 µg/ml. Predicted molecular weight: 53 kDa.

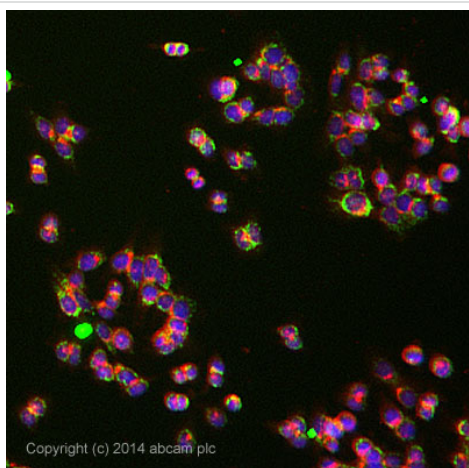
## Target

**Function** This is a component of the ubiquinol-cytochrome c reductase complex (complex III or cytochrome b-c1 complex), which is part of the mitochondrial respiratory chain. This protein may mediate formation of the complex between cytochromes c and c1.

**Sequence similarities** Belongs to the peptidase M16 family. UQCRC1/QCR1 subfamily.

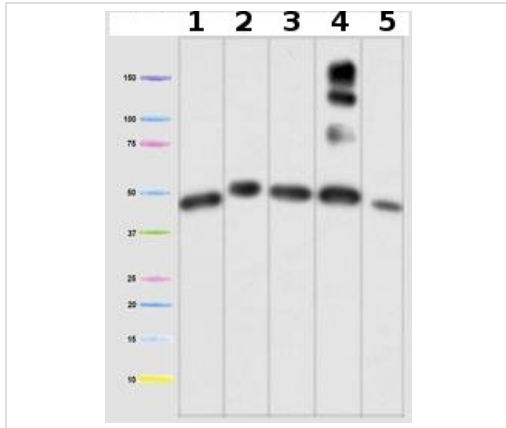
**Cellular localization** Mitochondrion inner membrane.

## Images



Immunocytochemistry/ Immunofluorescence - Anti-Ubiquinol-Cytochrome C Reductase Core Protein I antibody [16D10AD9AH5] (ab110252)

ab110252 stained HCT116 cells. The cells were 100% methanol fixed for 5 minutes at room temperature and then incubated in 1%BSA / 10% normal goat serum / 0.3M glycine in 0.1% PBS-Tween for 1 hour at room temperature to permeabilise the cells and block non-specific protein-protein interactions. The cells were then incubated with the antibody (ab110252 at 1/50 dilution) overnight at +4°C. The secondary antibody (pseudo-colored green) was [ab150117](#) used at a 1/1000 dilution for 1 hour at room temperature. Alexa Fluor® 594 WGA was used to label plasma membranes (pseudo-colored red) at a 1/200 dilution for 1 hour at room temperature. DAPI was used to stain the cell nuclei (pseudo-colored blue) at a concentration of 1.43µM for 1 hour at room temperature.



Western blot - Anti-Ubiquinol-Cytochrome C Reductase Core Protein I antibody [16D10AD9AH5] (ab110252)

**All lanes :** Anti-Ubiquinol-Cytochrome C Reductase Core Protein I antibody [16D10AD9AH5] (ab110252) at 0.5 µg/ml

**Lane 1 :** Human heart mitochondrial lysate

**Lane 2 :** Cow heart mitochondrial lysate

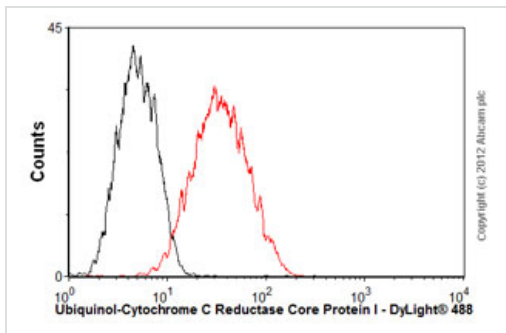
**Lane 3 :** Rat heart mitochondrial lysate

**Lane 4 :** Mouse heart mitochondrial lysate

**Lane 5 :** HepG2 mitochondrial lysate

**Predicted band size:** 53 kDa

Extra bands in the Mouse sample (lane 4) are due to the reaction of the IgG-specific goat anti-mouse secondary antibody with residual mouse blood in the heart tissue, as it is very difficult to entirely remove the blood from these small organs.



Flow Cytometry - Anti-Ubiquinol-Cytochrome C Reductase Core Protein I antibody [16D10AD9AH5] (ab110252)

Overlay histogram showing HepG2 cells stained with ab110252 (red line). The cells were fixed with 80% methanol (5 min) and then permeabilized with 0.1% PBS-Tween for 20 min. The cells were then incubated in 1x PBS / 10% normal goat serum / 0.3M glycine to block non-specific protein-protein interactions. The cells were then incubated with the antibody (ab110252, 1µg/1x10<sup>6</sup> cells) for 30 min at 22°C. The secondary antibody used was DyLight® 488 goat anti-mouse IgG (H+L) (ab96879) at 1/500 dilution for 30 min at 22°C. Isotype control antibody (black line) was mouse IgG1 [ICIGG1] (ab91353, 2µg/1x10<sup>6</sup> cells) used under the same conditions. Acquisition of >5,000 events was performed.

**Please note:** All products are "FOR RESEARCH USE ONLY AND ARE NOT INTENDED FOR DIAGNOSTIC OR THERAPEUTIC USE"

### Our Abpromise to you: Quality guaranteed and expert technical support

- Replacement or refund for products not performing as stated on the datasheet
- Valid for 12 months from date of delivery
- Response to your inquiry within 24 hours
- We provide support in Chinese, English, French, German, Japanese and Spanish
- Extensive multi-media technical resources to help you
- We investigate all quality concerns to ensure our products perform to the highest standards

If the product does not perform as described on this datasheet, we will offer a refund or replacement. For full details of the Abpromise, please visit <https://www.abcam.com/abpromise> or contact our technical team.

## **Terms and conditions**

---

- Guarantee only valid for products bought direct from Abcam or one of our authorized distributors