

Product datasheet

Anti-Vitellogenin antibody [JE-2A6] ab36805

1 Image

Overview

Product name	Anti-Vitellogenin antibody [JE-2A6]
Description	Mouse monoclonal [JE-2A6] to Vitellogenin
Host species	Mouse
Specificity	Does not cross-react with vitellogenin from the other cyrinid species carp (<i>Cyprinus carpio</i>), fathead minnow (<i>Pimephales promelas</i>) or roach (<i>Rutilus rutilus</i>).
Tested applications	Suitable for: ELISA, WB
Species reactivity	Reacts with: Zebrafish
Immunogen	Full length native vitellogenin purified from whole body homogenate of 17 beta estradiol treated zebrafish.

Properties

Form	Liquid
Storage instructions	Shipped at 4°C. Store at +4°C short term (1-2 weeks). Store at -20°C or -80°C. Avoid freeze / thaw cycle.
Storage buffer	pH: 7.40 Preservative: 0.08% Sodium azide Constituents: 1% BSA, 0.87% Sodium chloride, 1.64% Sodium phosphate
Purity	Protein G purified
Clonality	Monoclonal
Clone number	JE-2A6
Isotype	IgG2b
Light chain type	kappa

Applications

Our [Abpromise guarantee](#) covers the use of **ab36805** in the following tested applications.

The application notes include recommended starting dilutions; optimal dilutions/concentrations should be determined by the end user.

Application	Abreviews	Notes
-------------	-----------	-------

ELISA

WB

Application notes

ELISA: 1/100 - 1/1000.

Note: The antibody is dissolved in a buffer containing BSA, and is therefore not recommended to use for coating.

WB: 1/100 - 1/1000. Predicted molecular weight: 183 kDa.

Not yet tested in other applications.

Optimal dilutions/concentrations should be determined by the end user.

Target

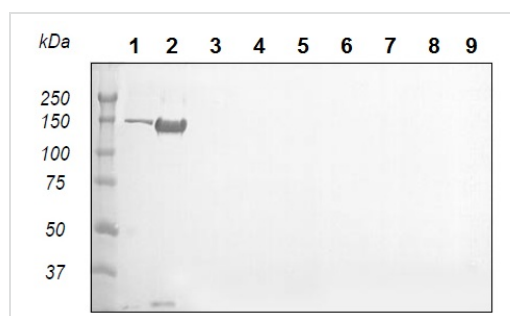
Relevance

Vitellogenin (Vg) is an egg yolk precursor protein expressed solely in female fish and is dormant in male fish, but in the presence of estrogenic EDCs, male fish can express the Vg gene but in a dose dependent manner. The use of Vg gene expression in male fish can be used as a molecular marker of exposure to estrogenic Endocrine Disrupting Chemicals (EDCs).

Cellular localization

Secreted

Images



Western blot - Anti-Vitellogenin antibody [JE-2A6] (ab36805)

All lanes : Anti-Vitellogenin antibody [JE-2A6] (ab36805) at 1/200 dilution

Lane 1 : Purified zebrafish vitellogenin at 2 µg

Lane 2 : Zebrafish whole body homogenate, 17β-estradiol treated at 10 µg

Lane 3 : Zebrafish whole body homogenate at 10 µg

Lane 4 : Carp plasma, 17β-estradiol treated at 10 µl

Lane 5 : Carp plasma at 10 µl

Lane 6 : Fathead minnow plasma, 17β-estradiol treated at 10 µl

Lane 7 : Fathead minnow plasma at 10 µl

Lane 8 : Roach plasma, 17β-estradiol treated at 10 µl

Lane 9 : Roach plasma at 10 µl

Predicted band size: 183 kDa

Please note: All products are "FOR RESEARCH USE ONLY AND ARE NOT INTENDED FOR DIAGNOSTIC OR THERAPEUTIC USE"

Our Abpromise to you: Quality guaranteed and expert technical support

- Replacement or refund for products not performing as stated on the datasheet
- Valid for 12 months from date of delivery
- Response to your inquiry within 24 hours

- We provide support in Chinese, English, French, German, Japanese and Spanish
- Extensive multi-media technical resources to help you
- We investigate all quality concerns to ensure our products perform to the highest standards

If the product does not perform as described on this datasheet, we will offer a refund or replacement. For full details of the Abpromise, please visit <https://www.abcam.com/abpromise> or contact our technical team.

Terms and conditions

- Guarantee only valid for products bought direct from Abcam or one of our authorized distributors