


## Product datasheet

# Anti-WDR45L antibody ab116087

1 Image

### Overview

<b>Product name</b>	Anti-WDR45L antibody
<b>Description</b>	Rabbit polyclonal to WDR45L
<b>Host species</b>	Rabbit
<b>Tested applications</b>	<b>Suitable for:</b> WB
<b>Species reactivity</b>	<b>Reacts with:</b> Rat <b>Predicted to work with:</b> Mouse, Rabbit, Horse, Chicken, Guinea pig, Cow, Cat, Dog, Human, Zebrafish 
<b>Immunogen</b>	Synthetic peptide corresponding to a region within N terminal amino acids 65 - 114 ( YLALVGGGKKPKYPPNKVMMWDDLKKKTVIEIEFSTEVKAVKLRDRIV ) of Rat WDR45L (NP_001034676).  <a href="#">Run BLAST with</a> <a href="#">Run BLAST with</a>
<b>Positive control</b>	Rat liver lysate

### Properties

<b>Form</b>	Liquid
<b>Storage instructions</b>	Shipped at 4°C. Upon delivery aliquot and store at -20°C. Avoid repeated freeze / thaw cycles.
<b>Storage buffer</b>	Preservative: 0.09% Sodium azide Constituents: 2% Sucrose, PBS
<b>Purity</b>	Immunogen affinity purified
<b>Clonality</b>	Polyclonal
<b>Isotype</b>	IgG

### Applications

Our [Abpromise guarantee](#) covers the use of **ab116087** in the following tested applications.

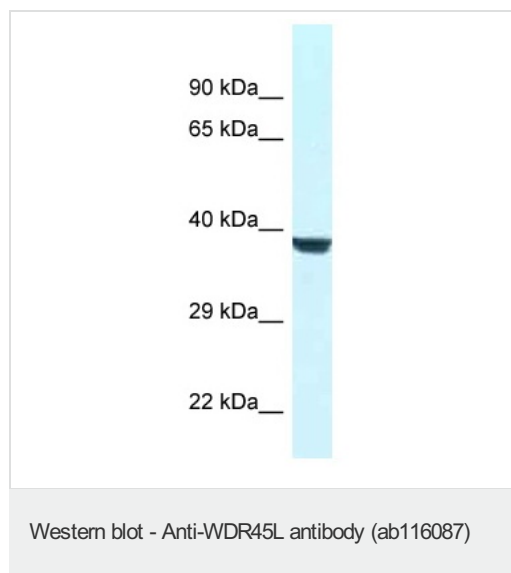
The application notes include recommended starting dilutions; optimal dilutions/concentrations should be determined by the end user.

Application	Abreviews	Notes
WB		Use a concentration of 1 µg/ml. Predicted molecular weight: 38 kDa. Good results were obtained when blocked with 5% non-fat dry milk in 0.05% PBS-T.

## Target

<b>Tissue specificity</b>	Ubiquitously expressed. Highly expressed in heart, skeletal muscle and pancreas. Up-regulated in a variety of tumor tissues including ovarian and uterine cancers.
<b>Sequence similarities</b>	Belongs to the WD repeat SVP1 family. Contains 2 WD repeats.

## Images



Anti-WDR45L antibody (ab116087) at 1 µg/ml  
+ Rat liver lysate at 10 µg

**Predicted band size:** 38 kDa

Gel concentration: 12%

**Please note:** All products are "FOR RESEARCH USE ONLY AND ARE NOT INTENDED FOR DIAGNOSTIC OR THERAPEUTIC USE"

## Our Abpromise to you: Quality guaranteed and expert technical support

- Replacement or refund for products not performing as stated on the datasheet
- Valid for 12 months from date of delivery
- Response to your inquiry within 24 hours
- We provide support in Chinese, English, French, German, Japanese and Spanish
- Extensive multi-media technical resources to help you
- We investigate all quality concerns to ensure our products perform to the highest standards

If the product does not perform as described on this datasheet, we will offer a refund or replacement. For full details of the Abpromise, please visit <https://www.abcam.com/abpromise> or contact our technical team.

## Terms and conditions

---

- Guarantee only valid for products bought direct from Abcam or one of our authorized distributors