

Product datasheet

Anti-WISP1 antibody ab60114

1 References 1 Image

Overview

Product name	Anti-WISP1 antibody
Description	Rabbit polyclonal to WISP1
Host species	Rabbit
Tested applications	Suitable for: ELISA, IHC-P
Species reactivity	Reacts with: Human
Immunogen	Synthetic peptide: CEDDAKRPRKTAPRDT conjugated to KLH, corresponding to N terminal amino acids 185-200 of Human WISP1 Run BLAST with Run BLAST with
Positive control	Human hepatocarcinom tissue.

Properties

Form	Liquid
Storage instructions	Shipped at 4°C. Store at +4°C short term (1-2 weeks). Upon delivery aliquot. Store at -20°C or -80°C. Avoid freeze / thaw cycle.
Storage buffer	Preservative: 0.09% Sodium Azide Constituents: PBS
Purity	Protein G purified
Purification notes	This antibody is purified through a protein G column and eluted out with both high and low pH buffers and neutralized immediately after elution then followed by dialysis against PBS.
Clonality	Polyclonal
Isotype	IgG

Applications

Our [Abpromise guarantee](#) covers the use of **ab60114** in the following tested applications.

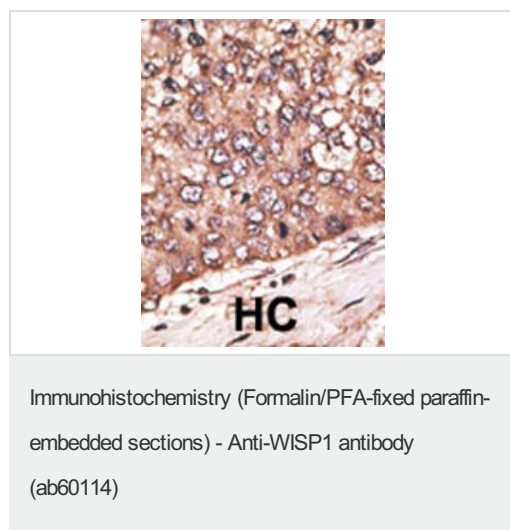
The application notes include recommended starting dilutions; optimal dilutions/concentrations should be determined by the end user.

Application	Abreviews	Notes
ELISA		1/1000.
IHC-P		1/50 - 1/100.

Target

Relevance	WISP1 is a downstream regulator in the Wnt/Frizzled-signaling pathway and is associated with cell survival. WISP1 attenuates p53-mediated apoptosis in response to DNA damage through activation of AKT kinase and up-regulates the anti-apoptotic Bcl-X(L) protein. WISP1 is expressed in heart, kidney, lung, pancreas, placenta, ovary, small intestine and spleen. Overexpression is associated with several cancers including breast cancer and colon tumors.
Cellular localization	Secreted

Images



Ab60114 (1/50-1/100) staining human WISP1 in human cancer tissue by immunohistochemistry using formalin fixed, paraffin embedded tissue.

Formalin-fixed and paraffin-embedded human cancer tissue reacted with the primary antibody, which was peroxidase-conjugated to the secondary antibody, followed by AEC staining.

HC = hepatocarcinoma.

Please note: All products are "FOR RESEARCH USE ONLY AND ARE NOT INTENDED FOR DIAGNOSTIC OR THERAPEUTIC USE"

Our Abpromise to you: Quality guaranteed and expert technical support

- Replacement or refund for products not performing as stated on the datasheet
- Valid for 12 months from date of delivery
- Response to your inquiry within 24 hours
- We provide support in Chinese, English, French, German, Japanese and Spanish
- Extensive multi-media technical resources to help you
- We investigate all quality concerns to ensure our products perform to the highest standards

If the product does not perform as described on this datasheet, we will offer a refund or replacement. For full details of the Abpromise, please visit <https://www.abcam.com/abpromise> or contact our technical team.

Terms and conditions

- Guarantee only valid for products bought direct from Abcam or one of our authorized distributors